

DIAMOND *Designs*

Luxury Salon Wear



be inspired

My childhood dream was to be involved in the beauty industry – hours spent swapping clothes and fighting over make-up with nine sisters kept my interest in everything girly and fashionable.

In 1989, after years of globetrotting and five beautiful daughters of my own, I fulfilled my dream and set up Diamond Designs with a couple of machinists and a telephone directory. From these humble beginnings, I'm proud that our company has grown into one of the most recognized luxury uniform brands in Ireland and the UK.

The influence of my girls in our business continues today – I have been joined by three daughters and two nieces, and choosing the names of our designs has never been a problem with over 46 nieces and two granddaughters to select from! We all take huge pride in our family's achievements to date and continue to give 100% commitment to our uniforms, from concept stage right through to production.

In all our designs, we endeavor to balance classic looks and current trends, and our 2011 collection is our most ambitious to date. We are delighted to introduce three new dresses to the market as well as several tunics. As always, our fabrics are innovative and exclusive, and inspired by your generous feedback, we now offer combed cotton uniforms and a more expansive colour range.

We really hope that you enjoy wearing our uniforms as much as we enjoyed creating them. I'd like to sincerely thank you for your continued loyalty, support and encouragement over the years.

Here's to the next 21 years!

Anne

Anne McDonnell
Managing Director



elegant



Anna

Glamorous dress with diamanté zip detail. Perfect complemented with leggings, tights or Diamond Designs Slim fit trousers.

Length: 34" from neck to hem.

Available: Black Pontella*

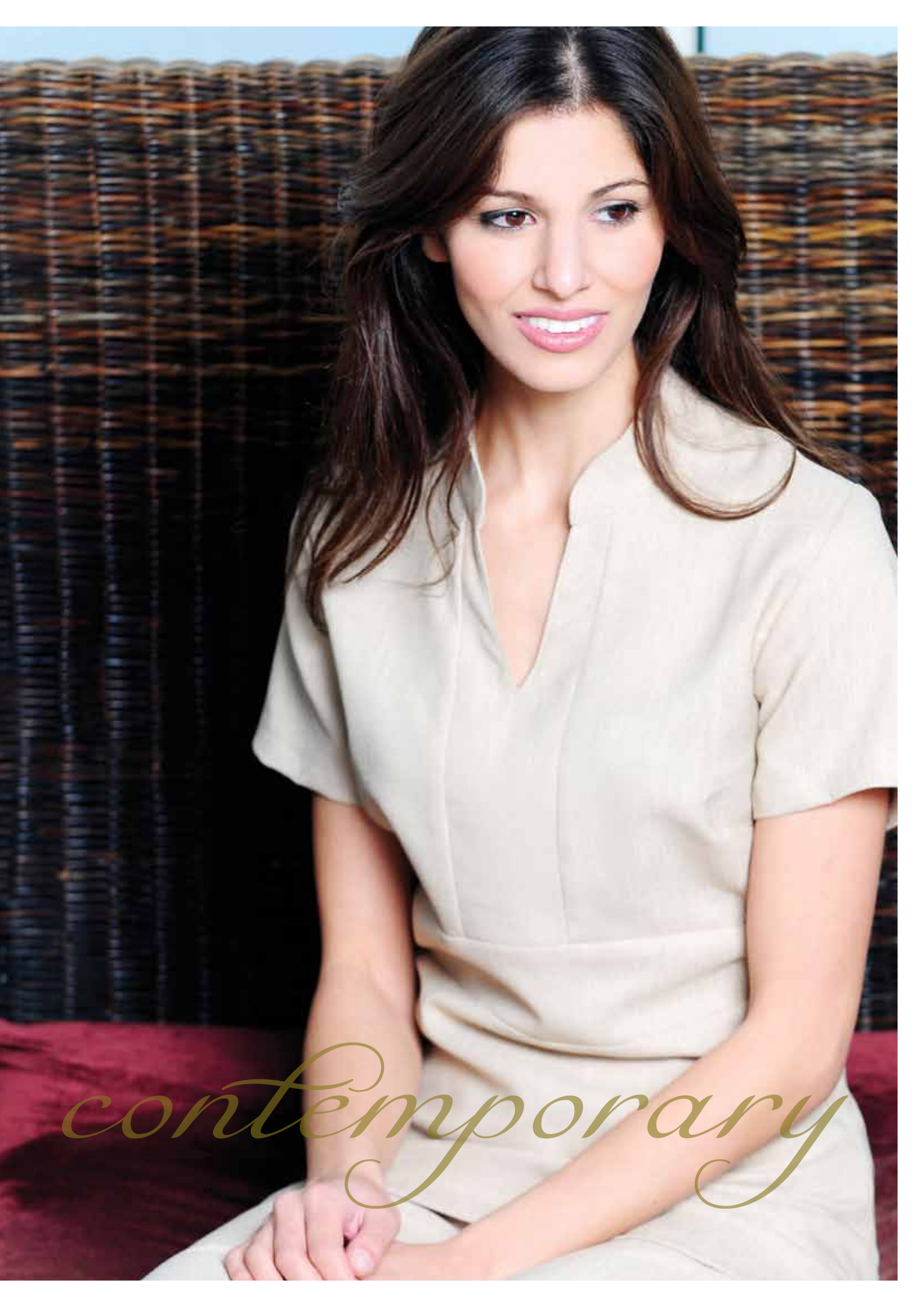
** Fabric information on inside back cover.*



Cara

Tasteful V Neck opening and wide band under the bust to enhance shape. Side vents for a flattering fit.

Available: Black Pontella | White Pontella | Brown Linen look | Beige Linen Look | Black pontella Leopard Print
Black pontella Zebra Print



contemporary



Flawless



Chloe

Stylish Tunic with contrasting stripe. Flattering V-Neck opening. Invisible zip and side vents.

Available: Black Pontella with zebra print | Black Pontella with Leopard print | Moss green linen look with winter white

Emma

COMBED COTTON wrap around tunic.
Extremely soft cotton provides optimum comfort for the wearer.
Hip Length and ties to the side.

Available: Black Cotton | White Cotton | Grey Cotton (on request)

Boyfriend Cardigan: Black longline cardigan. Working pockets to the front.
Luxury Wool blend.





natural



confident



Kate

Classic tunic with mandarin collar and front placket opening.
Darts on the bust to flatter shape. Front vents for ease of movement and style.

Available: Black Pontella | Red Pontella | Black Pontella with Zebra print | Black Pontella with Leopard print
Beige Linen look

Size 18+ comes with t-shirt length sleeve

Lili

Elegant tunic buttoned to the side. Diamanté effect buttons.
Structured neckline with collar and functional front pockets.

Available: Black pontella | White pontella | Purple linen look | Brown linen look





Classical



stylish

Lucy

Mid-length Kimono style tunic. Ties on the inside and then zips on the front to secure. Separate multi-way belt. Can be worn with or without. Can wear a variety of ways which complement your tunic.

Tunic Available: Black pontella | Brown Linen look | Beige Linen look

Multi-way Belt Available: Black/Zebra | Black/Leopard | Brown linen/Beige Linen





Nicole

Bestselling style with wrapover bodice and mandarin collar. Front and back fitted panels for a flattering shape. Front vents for ease of movement and style. Capped Sleeves*

Available: Black Pontella | White Pontella | Brown Linen look | Purple Linen look | Moss Green Linen look

* Size 18+ comes with t-shirt length sleeve



Luxurious



perfection

Nicole dress

A new twist on bestselling classic Nicole tunic.
Dress with wrap over bodice and mandarin collar.
Capped sleeve.

Complete the look with leggings, tights or Diamond Designs
Slim fit trousers.

Length: 34" from neck to hem

Available: Black Pontella | Brown Linen Look



Shannon

Timeless square neck tunic. Flatters every shape. Invisible zip and side splits for ease of movement.

Available: Black Luxury Crepe Actif | Brown linen look | Purple Linen Look
Moss Green linen look





beautiful



Timeless

Sophia

Classic square neck dress with front darts to enhance fit. Complete the look with leggings, tights or Diamond Designs Slim fit trousers.

Length: 34" from neck to hem.

Available: Purple Linen Look | Moss Green Linen Look
Brown Linen Look



Payment:

We accept all major credit and debit cards. Payments by credit card will incur a bank charge of 3%. Alternatively pay by cheque or postal orders made payable to Diamond Designs. Please write your address and cheque card details on the back of your cheque. Orders will be processed when full payment is received.

Delivery Information:

Deliveries to Irish addresses are €5.50 for 1 garment, plus €2 for each additional garment. (Max: €10.50) For delivery outside the Republic of Ireland please call +353 (0) 42 9746333. Garments in stock at the time of your order will be delivered in two working days. If an item is not in stock please allow 4 weeks for delivery. Your order will not be despatched until full payment has been received.

Stock Levels:

We stock support our most popular tunics. Please contact us on **+353 (0) 42 9746333** for information on stock levels before ordering.

Refunds and Exchanges:

If you are unhappy with your purchase, you may return it to us for an exchange or full refund*. Goods must be returned unworn and unwashed within 14 days of despatch. Items that have been made to a client's specification cannot be returned. We recommend garments be returned by registered post as security for yourself. Unfortunately we cannot reimburse carriage.

** In some cases a handling charge may apply.*

Embroidery:

Should you require your garments to be personalised by adding a logo, please contact our office for advice on the extra costs involved. Please allow an extra 5 – 10 days for embroidery.

Buttons and Diamanté Logo:

Our diamanté logo is purely decorative. If it comes off whilst washing it does not affect the quality of your garment in any way. If this does occur please contact us for replacement diamantés. Buttons from the Lili design can also be replaced if lost and incur a small charge. Some buttons and fabric details are subject to availability. Diamond Designs reserve the right to amend design details.

Bespoke Collections:

Bespoke collections are available for orders of 50 plus garments. May be subject to consultation costs - please contact our sales team for advice.

Fabric Information:

Pontella™ - Luxury French performance fabric. Highly modified polyester filament that gives you the ultimate in long term performance. Unrivalled colour retention, excellent size and shape stability. Breathable, wicking fabric – transfers odours away from the body. Available in Black, White and Red.

Linen Look™ - Exclusive to Diamond Designs this fabric has being designed specifically for the beauty industry. It has all the pro's of Linen and non of the cons. It has a natural look and texture. Lightweight fabric perfect for the humid Spa environment. Does not crease while wearing. Durable, high performance fabric.

Available in: Brown, Beige, Moss Green, Winter White, Purple.

Combed Cotton: 100% Combed Cotton on the skin for optimum comfort of the wearer. This side is a jersey for softness on the skin. 100% Natura™ on the outside for long lasting colour fastness, non shiny aspect and vivid colours. Available in Black White and Grey.

Order By Phone:

+353 (0) 42 974 6333

Order lines are open

8am – 5pm : Monday – Thursday

8am – 1pm Friday.

Order By Fax:

+353 (0) 42 974 6825

Fax your completed order to us. Payment can be made by cheque or credit card.

Order By Post:

Post the order form supplied and your payment to:

Diamond Designs,
Main Street, Castleblayney, Co. Monaghan, Ireland.

Order Online:

www.diamonddesigns.ie

View our entire range online and buy through our secure website. All prices include VAT at 21%

Do's and Don'ts when looking after your pontella and linen look garments:

DO wash your garments a 40°C.

DO hang to dry (very short drying time).

DO iron on a cool setting if necessary.

DO wash white garments separately.

DO treat wax and oil stains at the end of your working day.

DO Iron on the reverse to avoid shine.

DO NOT tumble dry.

DO NOT use fabric softeners.

DO NOT soak garments.

How to measure for a perfect fit:

Bust: Simply measure around the shoulder blades, underarms and the fullest part of the bust.

Waist: Stand in a relaxed position and measure around the narrowest part of the waistline.

NB: These sizes are quoted in standard British/Irish sizing.

Size	UK6		UK8		UK10		UK12		UK14		UK16		UK18		UK20		UK22		UK24	
	CM	IN	CM	IN	CM	IN	CM	IN	CM	IN	CM	IN	CM	IN	CM	IN	CM	IN	CM	IN
BUST	76	30	81	32	86	34	91	36	96	38	101	40	106	42	111	44	116	46	121	48
WAIST	58	22 ¾	63	24 ¾	68	26 ¾	73	28 ¾	78	30 ¾	83	32 ¾	88	34 ¾	93	36 ¾	98	38 ¾	103	40 ¾
HIPS	84	33	89	35	94	37	99	39	104	41	109	43	114	45	119	47	124	49	129	51



Billing Address

Company Name _____

Contact Name _____

Address _____

Tel _____

Fax _____

Email _____

Delivery Address

Company Name _____

Contact Name _____

Address _____

Tel _____

Fax _____

Email _____

PURCHASE ORDER NUMBER

Style Code	Description	Colour	Size	Quantity	Unit Price	Total Cost

Sub Total

Carriage

Total Cost

☐ I wish to pay by Cheque.
Please make cheques payable to Diamond Designs Ltd.

☐ I wish to pay by Credit Card.
Please charge my Visa, Mastercard or Laser.

Card No.

<input type="text"/>	<input type="text"/>	<input type="text"/>	<input type="text"/>
<input type="text"/>	<input type="text"/>	<input type="text"/>	<input type="text"/>

Valid From

Expires

Issue No.

Security Code

(last 3 digits on the strip on the back of your card)

Signature

Name

Date

Style	Colour	Price <i>Including VAT</i>
Nicole	White/Black/Purple/Brown/Green	€58.25
Kate	Black /Red/ Beige Black Zebra/Black Leopard	€59.25 €60.25
Cara	Black /White/Beige/Brown Black Leopard / Black Zebra	€59.25 €60.25
Emma	Black /White Combed Cotton Grey Combed Cotton**	€62.00 €63.00
Protective Apron	Black	€20.10
Lucy	Black/Brown/Beige Choice of belts – see Lucy page in catalogue	€64.00
Lili	Black/White Brown/Purple (linen look)	€68.30 €66.30
Chloe	Black Zebra / Black Leopard/ Green & white	€60.25
Shannon	Black/Purple/Brown/Green	€60.25
Sophia	Brown/Purple	€66.00
Nicole Dress	Brown/Black	€66.00
Anna	Black with Diamante Zip	€68.00
Skinny fit trs.	White/black/Brown/Beige/Purple	€42.20
Bootleg Trousers	32" Black/White 32" Beige/Brown/Purple/Green	€46.20 €46.20
Cropped Trousers	Black/White/Beige/Brown/Purple/Green	€40.15
City Shorts	Black/White/Beige/Brown/Purple/Green	€38.15
Boyfriend Cardigan	Black	€35.00

- Size 20+ incurs a surcharge of €4
- ** Emma Grey available on request



DIAMOND *Designs*

Diamond Designs Ltd.
Main Street
Castleblayney
Co. Monaghan
Ireland

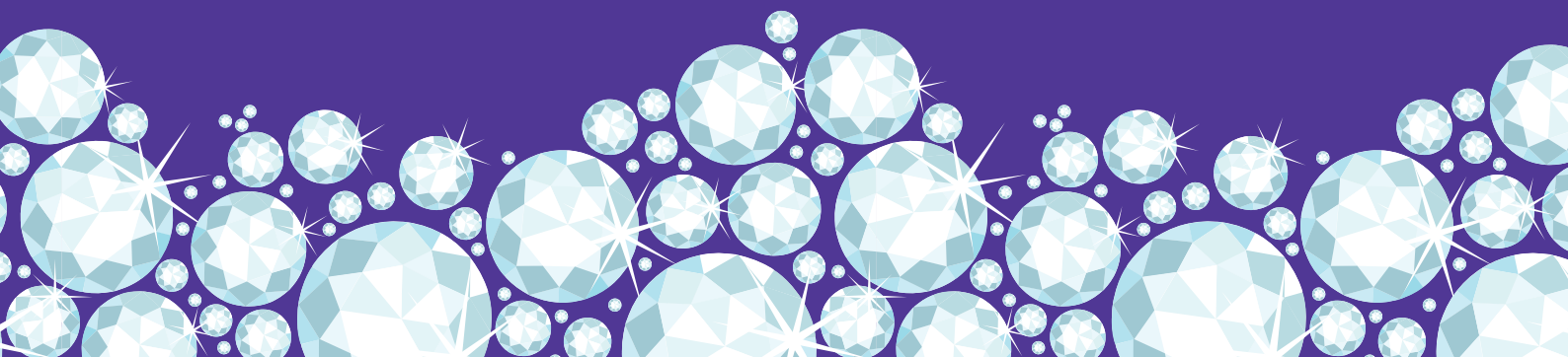
T: +353 42 974 6333
E: info@diamonddesigns.ie

www.diamonddesigns.ie



DIAMOND *Designs*

New Product Range





captivating

Grey Linen Look

Slate grey fabric in linen effect. Available in:

- Lili** Elegant tunic with structured neckline and collar.
- Sophia** Classic square neck dress with darts to enhance fit. Complete the look with leggings or diamond designs bootleg/skinny trousers.
- Shannon** Timeless square neck tunic with invisible zip and side splits.
- Nicole** Contemporary style with wrapover effect bodice and mandarin collar. Capped sleeves *

* Size 18+ has t-shirt length sleeves.



Sophia



Shannon



Nicole

Leaf Linen Look

Exclusive beige linen look fabric with a distinctive chocolate leaf print throughout. Wear with brown linen look trousers. Available in:

Lili Elegant tunic with structured neckline and collar.

Shannon Timeless square neck tunic with invisible zip and side splits.



Lili



Shannon

Emma

Wrap around tunic, relaxed style provides optimum comfort for the wearer. Hip length and ties to the side. Available in:

Purple Linen Look / Brown Linen Look



Emma



Emma

DIAMOND *Designs*

Pricelist

Price (incl. vat)

Nicole	Grey Linen Look	€59.20
Emma	Purple Linen Look / Brown Linen Look	€61.25
Lili	Grey Linen Look / Leaf Print Linen Look	€69.50
Shannon	Grey Linen Look / Leaf Print Linen Look	€61.25 / €62.50
Sophia	Grey Linen Look	€67.10

Bootleg Trousers	€47.00
-------------------------	---------------

32" Grey Linen Look / 32" Brown or Beige Linen Look

Cropped Trousers	€40.80
-------------------------	---------------

Grey Linen Look / Brown Linen Look

City Shorts	€38.80
--------------------	---------------

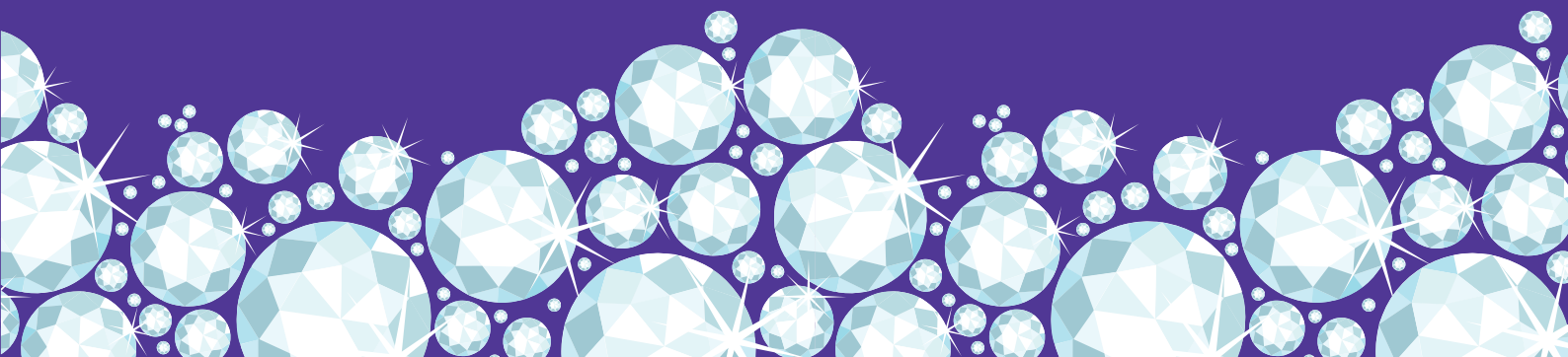
Grey Linen Look / Brown Linen Look

* Sizes 20+ incur a charge of €4.00 per garment

Diamond Designs
Main Street
Castleblayney
Co. Monaghan
Ireland

T: +353 42 974 6333
E: info@diamonddesigns.ie

www.diamonddesigns.ie





Topaz



Amber



Sapphire

DIAMOND
Designs



Crystal
Collection







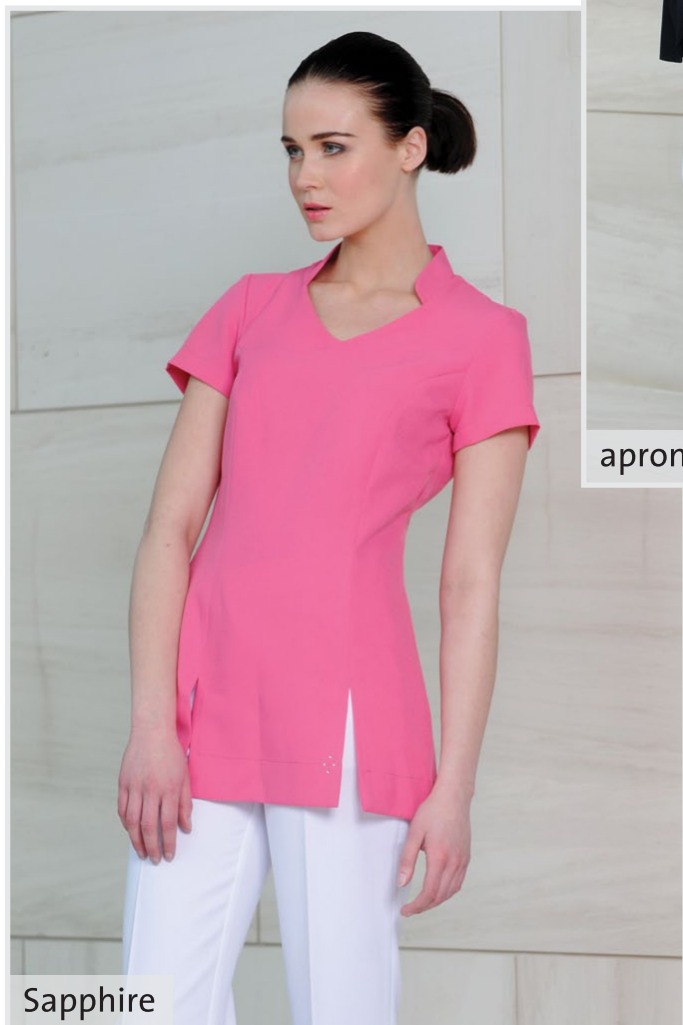
Amber



Ruby



apron



Sapphire



Ruby

SHOT AT THE RADISSON, GOLDEN LANE, DUBLIN 8

Crystal Collection Toray Pricelist 2012

(price includes vat @ 23%)

Topaz – Navy/White, Pink/White, Black	€39.40
Amber – Pink, White, Navy, Black	€39.40
Sapphire – Pink, White, Black, Navy	€39.40
Ruby – White, Black, Red, Blue	€38.90
Protective Apron- Black	€20.33
Bootleg Trousers 32" – Black, Navy	€33.20

❖ Sizes 20+ incur a charge €4 per garment

**ALL TUNICS IN THE CRYSTAL COLLECTION RANGE ARE
MANUFACTURED IN OUR SUPERIOR TORAY FABRIC.**

TORAY QUALITIES:

- Silver Protection Anti-Bacterial finish
- Easy care
- Durable
- Anti Odour
- Soil Release
- Moisture Control
- Thermo Dynamic
- Stay Fresh