

Chef Works®

Product Catalogue

BACK OF HOUSE & FRONT OF HOUSE HOSPITALITY UNIFORMS

CHEF COATS | APRONS | SHIRTS & TOPS | SUITING | TROUSERS | HEADWEAR | FOOTWEAR

Welcome

Our Chef Works story began with a small uniform company in the late 1960s. More than five decades later, our story continues to evolve. Whilst we've grown to be the global leader in culinary and hospitality apparel, we're still rooted in the same family-owned and customer-focused principles that were established all those years ago.

With our EME headquarters and warehousing based in the UK and corporate offices around the world, Chef Works has achieved an unrivaled global reach, offering distribution in more than 90 countries. Through working with culinary giants and hospitality influencers, we've created a fit-for-purpose apparel collection that is innovative, functional and design-focused.

Chef Works are proud to dress a diverse range of customers including individual chefs, international hotel chains, award-winning restaurants, bars, culinary schools, food service companies, laundries, assisted-living facilities and upscale cinemas.

GUIDE TO SIZING/FITS

Our new and improved sizing guide is designed to help you find your perfect fit. Throughout this catalogue you will see icons next to items that correspond to specific fits and sizing charts. Please refer to pages 180-181 to view the sizing guide.

EXAMPLE:

MF 1 Modern Fit Men's Shirt

GUIDE TO CATALOGUE ICONS



- Street-inspired culinary apparel
- Natural fabrics, dual tone denims, unique fabric finishes
- Twists on the traditional
- Cutting-edge • High-quality



- Reuse, Recycle, Renew
- Sustainable collection
- Made from recycled plastic bottles



- Recycled fabrics
- Sustainable collection
- Athleisure, flexible style
- Maximum comfort



- Skillfully created collaborative collection
- Elegant & professional
- Emphasis on performance
- Subtle colour notes
- Strong silhouettes



- Evolving the face of hospitality apparel
- Double-sided stylish face covers
- Fit snugly to face



- Special washes & treatments create unique garments
- May fade/change colour with wash and wear
- Wash separately before wearing
- Warm iron only on back of garment



- Wicks heat and moisture away from skin
- Allows cool air back through to body
- Encourages evaporation
- Cool & comfortable
- Award-winning fabric technology



- 100% cotton
- Pre-shrunk for accurate fit
- Luxurious and refined feel for extreme comfort
- Silky texture and appearance



- Stretch-to-fit
- Breathable fabric
- Comfortable and lightweight
- Available in a variety of colours



- Fine twill fabric
- Comfortable & lightweight
- Available in a variety of colours



- Made from 100% cotton
- All natural fibres
- Comfortable and breathable



- Classic and modern fits
- Strong colour options and matching
- European styling
- Quality meets value



- Made in Britain
- Non-surgical face covers
- Machine washable.



- Functionality, quality, tradition and style
- Maximum comfort
- Sustainable products



- Finest European quality
- For Spa & Housekeeping
- Style meets function
- Quality meets value



- Sign of quality
- Established in 1912
- Exquisitely tailored shirts and suiting
- A number of fabrics and shades



- Quality production
- Large colour collection
- Perfect for decoration



- 100% cotton
- High wash temperatures
- Quality meets value
- Perfect for decoration



- Dynamic outdoor clothing
- Value for money



- High quality workwear
- International standards
- Comfortable and Functional



- Modern design
- Functional and affordable staples



- Functional stylish polos
- Workwear specialists
- Enhanced durability



- Original slip resistant footwear
- Designed for safety and comfort



- Premium denim
- Versatile and timeless
- Adaptable, affordable staples



- Organic cotton
- Style meets sustainability
- Made to last
- Responsible production



- 100% comfort guaranteed footwear
- Designed to reduce pain and provide support



- Nano-protected coating
- Repels water and other liquids
- Adds to durability.



- Certified fabrics
- No harmful substances used during any process steps.



- Exceptional elasticity
- Synthetic fibre
- Abrasion resistant.

TABLE OF CONTENTS

4

Sustainable Collection

12

Unisex Coat Collection

36

Women's Coat Collection

46

Trouser Collection

60

Shirt & Top Collection

101

Housekeeping & Spa Collection

106

Apron Collection

142

Suiting Collection

160

Shoe Collection

168

Headwear & Accessories Collection

174 Embroidery & Order Info
176 Sizing Chart
180 Global Team
182 Quick Reference



Sustainable Collection



FLEX
SERIES

RE:USE RE:CYCLE RE:NEW

Our Back-of-House eco-friendly capsule collection offers the usual style, innovation and comfort of our Chef Works designs made with sustainable materials and components. We use ethically sourced recycled plastic bottles to make our sustainable fabric



New

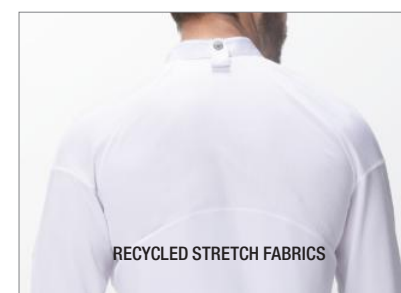
TULUM



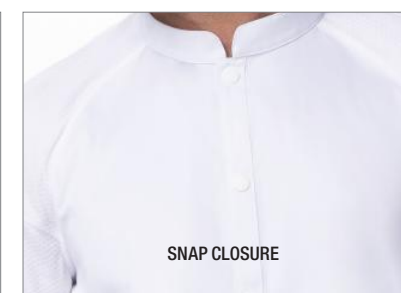
BLK
black

GRY
grey

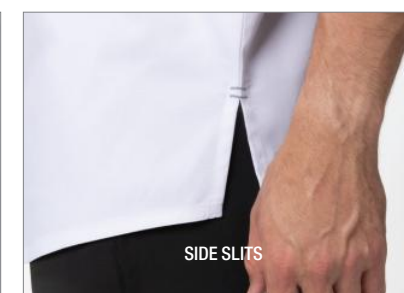
WHT
white



RECYCLED STRETCH FABRICS



SNAP CLOSURE



SIDE SLITS

TULUM UNISEX CHEF COAT

170 gm² / 5.0 oz. 100% recycled polyester knit mesh. 176 gm² / 5.2 oz. 31/31/38 recycled poly/poly/cotton made from recycled plastic bottles. Raglan sleeve with snap front closure. Left sleeve thermometer pocket with side slits, back collar apron tab and colour-matching Cool Vent™ knit mesh.

Available in: Black, Grey, White.

CBS01 | SIZES: S-4XL MF 1



New

TULUM



BLK
black

GRY
grey

WHT
white

TULUM FEMALE CHEF COAT

170 gm² / 5.0 oz. 100% recycled polyester knit mesh. 176 gm² / 5.2 oz. 31/31/38 recycled poly/poly/cotton made from recycled plastic bottles. Raglan sleeve with snap front closure. Left sleeve thermometer pocket with side slits, back collar apron tab and colour-matching Cool Vent™ knit mesh.

Available in: Black, Grey, White.

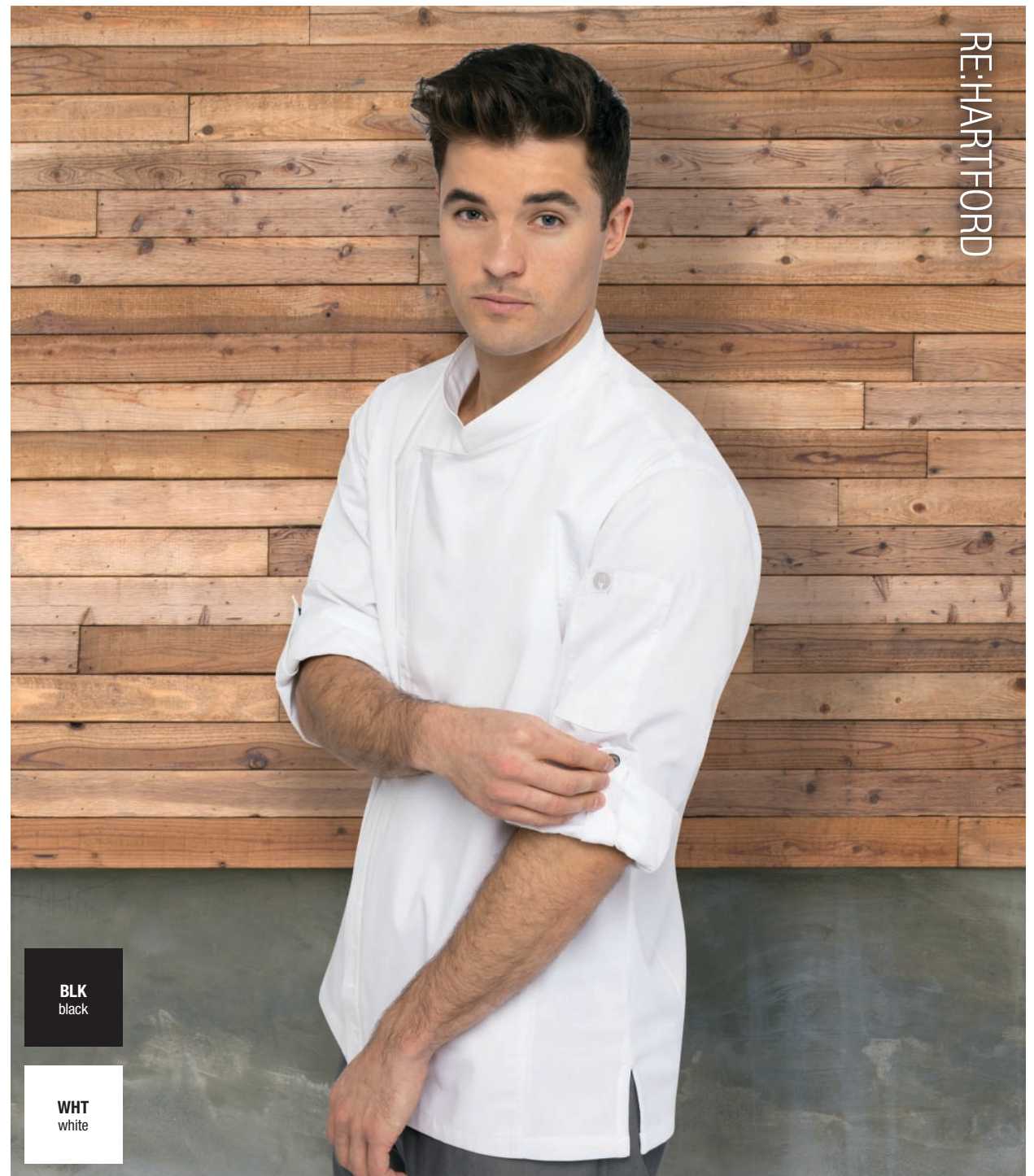
CBS01W | SIZE: XS-3XL **SF 1**

STRETCH

CoolVent

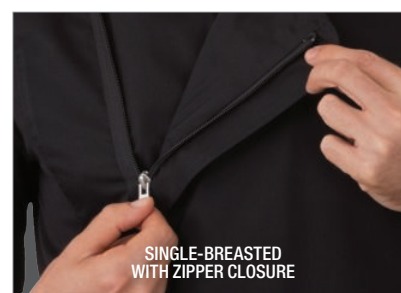
FLEX
SERIES

RE:HARTFORD

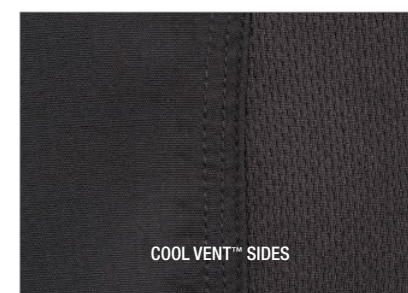


BLK
black

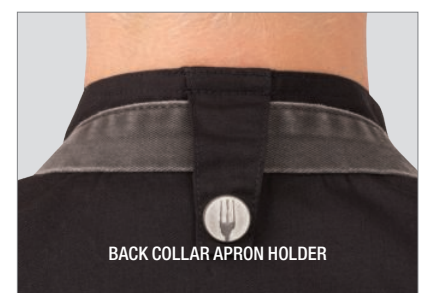
WHT
white



SINGLE-BREASTED
WITH ZIPPER CLOSURE



COOL VENT™ SIDES



BACK COLLAR APRON HOLDER

RE:HARTFORD ESSENTIAL CHEF COAT

160 gm² / 4.7 oz, 65/35 recycled poly/cotton 'Lite' twill fabric made from recycled plastic bottles, Cool Vent™ sides, seam slits, short-sleeve, single-breasted with zipper, back collar apron holder with fork engraved snap, left sleeve rounded thermometer pocket and right sleeve cell phone/notebook pocket.

Available in: Black, White.

REBCLZ | SIZES: XS-3XL **MF 1**

lite

CoolVent

Re:



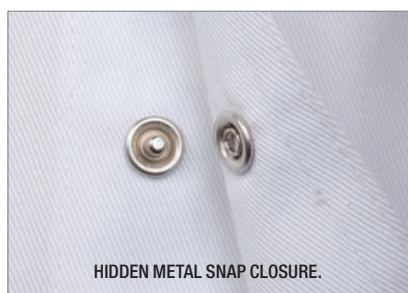
Sustainable Collection

RE:CANNES

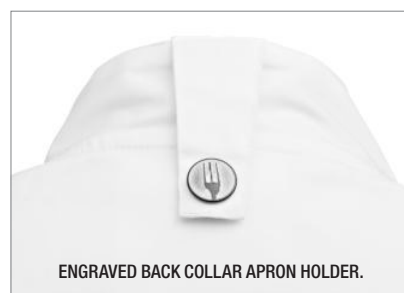


BLK
black

WHT
white



HIDDEN METAL SNAP CLOSURE.



ENGRAVED BACK COLLAR APRON HOLDER.



COOL VENT™ UNDERARM.

RE: CANNES ESSENTIAL SUSTAINABLE CHEF COAT

160 gm² / 4.7 oz 65/35 recycled poly/cotton. Cool Vent™ underarm panels, short sleeve, back collar apron holder, side seam slits, concealed snap front and left sleeve thermometer pocket

Available in: Black, White.

RESSN | SIZE: XS - 3XL



RE:BIB

BLK
black

WHT
white

BLK
black

WHT
white

RE:BIB APRON

210 gm² / 6.2 oz, 65/35 recycled poly/cotton made from recycled plastic bottles, no pocket essential simple bib apron

Available in: Black, White.

REAPK | SIZE: 86cm L x 61cm W

RE:ESSENTIAL CHEF COAT

210 gm² / 6.2 oz, 65/35 recycled poly/cotton made from recycled plastic bottles, long sleeve, double-breasted, turn-back cuffs, side-seam slits, left sleeve thermometer pocket

Available in: Black, White.

REWCCW | SIZES: XS-3XL CF 1





RE:BISTRO APRON

BLK
black

WHT
white

RE:BISTRO APRON

210 gm² / 6.2 oz. 65/35 recycled poly/cotton with front pocket including pencil divide.

Available in: Black, White.

REF24 | SIZE: 81cm L x 40cm W



RE:CHEF BIB

BLK
black

WHT
white

RE:CHEF BIB

210 gm² / 7.4 oz. 65/35 recycled poly/cotton adjustable by pulling ties.

Available in: Black, White.

REA100 | SIZE: 100cm L x 94cm W



RE:LIGHTWEIGHT SLIMFIT PANTS

BLK
black



ELASTIC WAISTBAND
WITH DRAWSTRING



2 SIDE SEAM POCKET



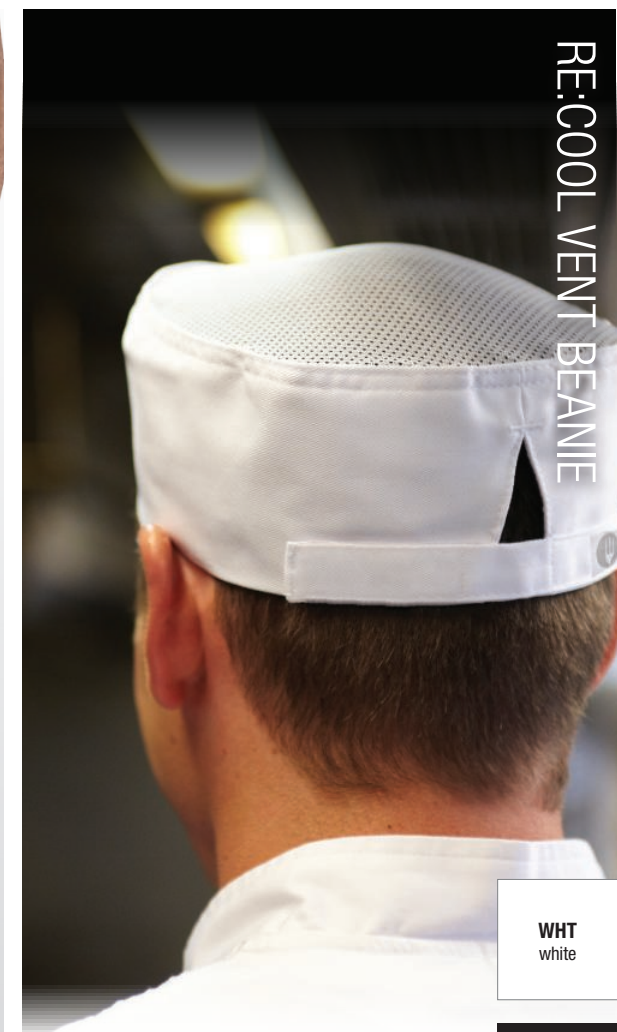
REAR PATCH POCKET

RE:LIGHTWEIGHT SLIMFIT PANTS

159 gm² / 4.7 oz, 65/35 recycled poly/cotton 'lite' twill fabric, contrast elastic waistband with internal drawstring, two front set-in pockets.

Available in: Black.

REPB01 | SIZES: XS-3XL MF 1



RE:COOL VENT BEANIE

WHT
white

BLK
black



REDFCV - BLK



REDFCV - WHT

RE:COOL VENT™ BEANIE

210 gm² / 6.2 oz, 65/35 recycled poly/cotton base, Cool Vent™ mesh top, adjustable Velcro® closure, one size fits most.

Available in: Black, White.

REDFCV | SIZE: ONE SIZE FITS MOST





Unisex Coat Collection

As the modern chef continues to evolve, so too does our extensive chef coat collection. Whether you are building a strong uniform foundation with our Essential Coat Collection or choosing from our fine range of luxurious fabrics and polished details of our Executive Coat Collection – there is a look for everyone in the kitchen with Chef Works

Left: Chef Phillip Esteban, CH Projects
Right: Chef Thiago Silva, CHEW Innovation, USA
HARTFORD CHEF COAT | BCLZ008-BLK/BLU

New

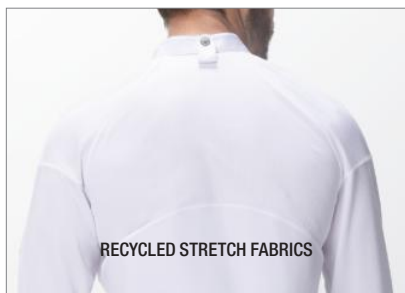
TULUM



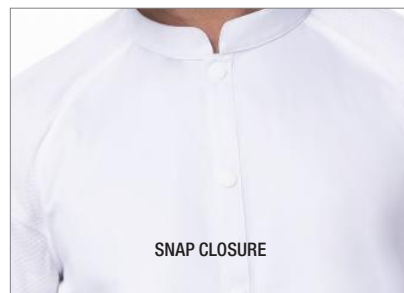
BLK
black

GRY
grey

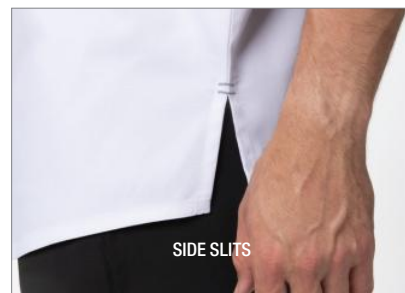
WHT
white



RECYCLED STRETCH FABRICS



SNAP CLOSURE



SIDE SLITS

TULUM UNISEX CHEF COAT

170 gm² / 5.0 oz. 100% recycled polyester knit mesh. 176gm²/5.2oz. 31/31/38 recycled poly/poly/cotton made from recycled plastic bottles. Raglan sleeve with snap front closure. Left sleeve thermometer pocket with side slits, back collar apron tab and colour-matching Cool Vent™ knit mesh.

Available in: Black, Grey, White.

CBS01 | SIZES: S-4XL MF 1

STRETCH

CoolVent

FLEX
SERIES



Unisex Coat Collection

New

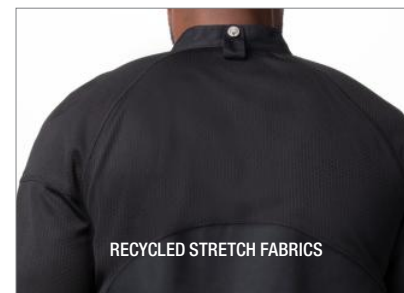
TULUM



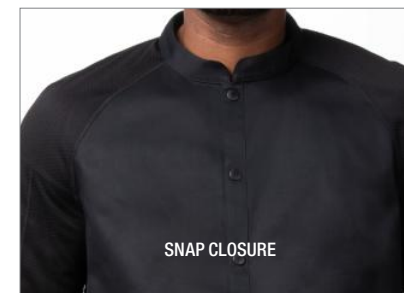
BLK
black

WHT
white

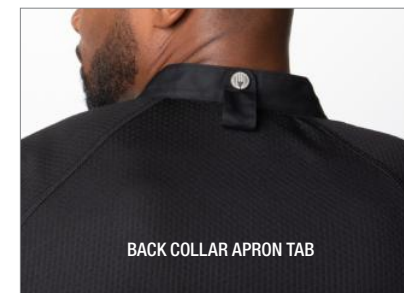
GRY
grey



RECYCLED STRETCH FABRICS



SNAP CLOSURE



BACK COLLAR APRON TAB

TULUM UNISEX CHEF COAT

170 gm² / 5.0 oz. 100% recycled polyester knit mesh. 176gm² /5.2 oz. 31/31/38 recycled poly/poly/cotton. Raglan sleeve with snap front closure. Left sleeve thermometer pocket with side slits, back collar apron tab and colour-matching Cool Vent™ knit mesh.

Available in: Black, White, Grey.

CBS01 | SIZES: S-4XL MF 1

STRETCH

CoolVent

FLEX
SERIES

TULUM



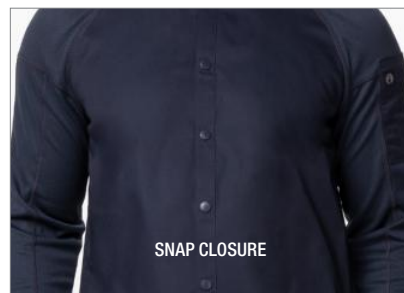
BLK
black

WHT
white

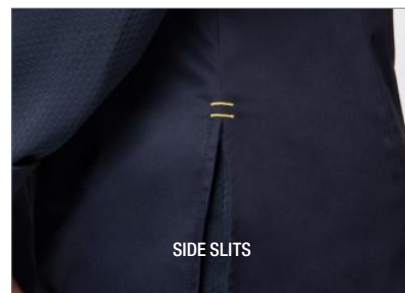
GRY
grey



RECYCLED STRETCH FABRICS



SNAP CLOSURE



SIDE SLITS

TULUM UNISEX CHEF COAT

170 gm² / 5.0 oz. 100% recycled polyester knit mesh. 176gm² / 5.2 oz. 31/31/38 recycled poly/poly/cotton. Raglan sleeve with snap front closure. Left sleeve thermometer pocket with side slits, back collar apron tab and colour-matching Cool Vent™ knit mesh.

Available in: Black, White, Grey.

CBS01 | SIZES: S-4XL MF 1

STRETCH

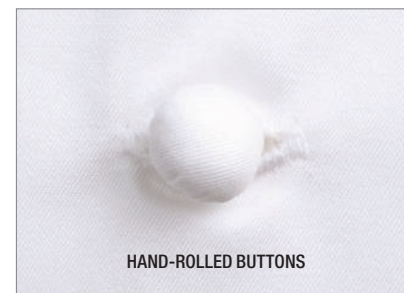
Cool Vent

FLEX
SERIES

CAPRI



WHT
white



HAND-ROLLED BUTTONS



CHEST AND THERMOMETER POCKETS

CAPRI PREMIUM COTTON CHEF COAT

180 gm² / 5.3 oz, 100% Super Combed 120 cotton, short-sleeve, hand-rolled buttons, left chest inset and thermometer pockets

Available in: White.

ECSS | SIZES: 34-58 CF 2

SUPER
COMBED 120

Chef Chad Kilgore, Cup of Dreams Foundation, San Diego, USA



Unisex Coat Collection



WHT
white

MADRID PREMIUM COTTON CHEF COAT

180 gm² / 5.4 oz, 100% Super Combed 120 cotton, French cuffs, underarm vents, hand-rolled buttons, left chest inset pocket and thermometer pocket.

Available in: White.

ECHR | SIZES: 34-62 **CF 2**

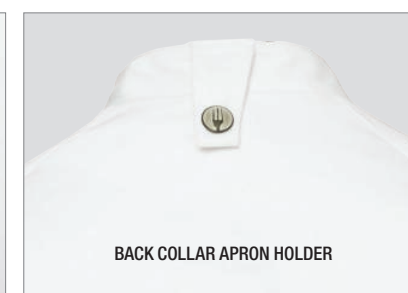
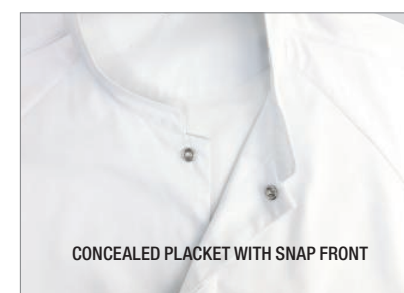


**SUPER
COMBED
120**



BLK
black

WHT
white



VALENCIA EXECUTIVE CHEF COAT

159 gm² / 4.7 oz, 65/35 poly/cotton 'Lite' twill fabric, contrast fabric design with stretch knit and Cool Vent™ panels, piping detail along sleeve seam, single-breasted with concealed snap closure, long-sleeve with turn-back cuffs, side-seam slits, back-collar apron holder with engraved snap tab, hidden front zipper pockets, left and right sleeve pockets.

Available in: Black, White.

CES04 | SIZES: S-3XL **MF 1**



lite

Cool Vent

**ChefWorks
URBAN
COLLECTION**



BLK
black

IBL
indigo blue

GRAMERCY EXECUTIVE CHEF COAT

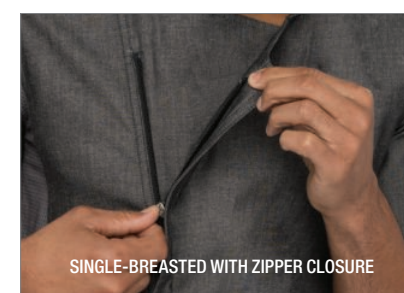
163 gm² / 4.8 oz, 100% cotton denim fabric, single-breasted with two-way separating zipper, roll-up long sleeve with tab, back collar apron holder with fork engraved snap, contrast double-stitching throughout, left sleeve rounded thermometer pocket and right sleeve rounded cell phone/notebook pocket with hidden earphone wires hole. Women's fit available EXWDZ002 (see page 40).

Available in: Black, Indigo Blue.

EXDZ001 | SIZES: XS-3XL (Black 4XL) **MF 1**



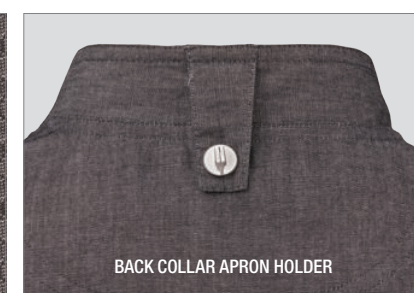
BLK
black



SINGLE-BREASTED WITH ZIPPER CLOSURE



STRETCH SIDE PANELS



BACK COLLAR APRON HOLDER

DELANCEY EXECUTIVE CHEF COAT

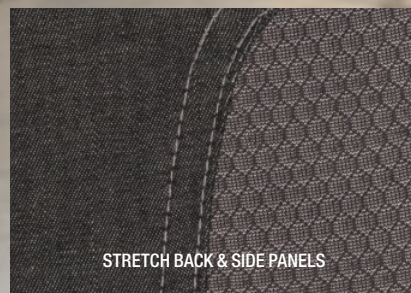
163 gm² / 4.8 oz, 100% cotton denim with stretch side panels, short-sleeve, single-breasted with zipper closure, side seam slits, back collar apron holder with engraved snap, left sleeve thermometer pocket, right sleeve cell phone pocket.

Available in: Black.

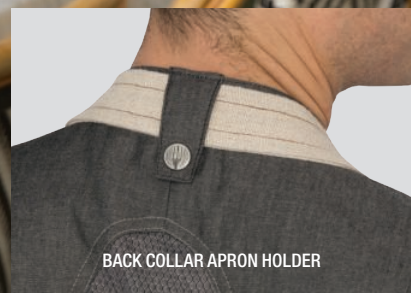
CEZ01 | SIZES: S-3XL **MF 1**



BLK
black



STRETCH BACK & SIDE PANELS



BACK COLLAR APRON HOLDER

TRIBECA EXECUTIVE CHEF COAT

163 gm² / 4.8 oz, 100% cotton denim with stretch back & side panels, short-sleeve, single-breasted with snap closure, side seam slits, back collar apron holder with engraved snap, left sleeve thermometer pocket, right sleeve pocket, hidden front zipper pockets. Women's style available CES05W (see page 41).

Available in: Black.

CES01 | SIZES: S-3XL **MF 1**



GBC
grey/black

WGC
white/grey



GBC - COOL VENT™
BACK AND UNDERARM PANELS



WGC - COOL VENT™
BACK AND UNDERARM PANELS

VALAIS EXECUTIVE CHEF COAT

160 gm² / 4.7 oz, 65/35 poly/cotton 'lite' twill fabric, Cool Vent™ back and underarm panels, short-sleeve, single-breasted, contrast topstitching, side seam slits, cloth-covered buttons, left chest patch and thermometer pockets.

Available in: Grey/Black, White/Grey.

VSSS | SIZES: S-3XL **CF 1**

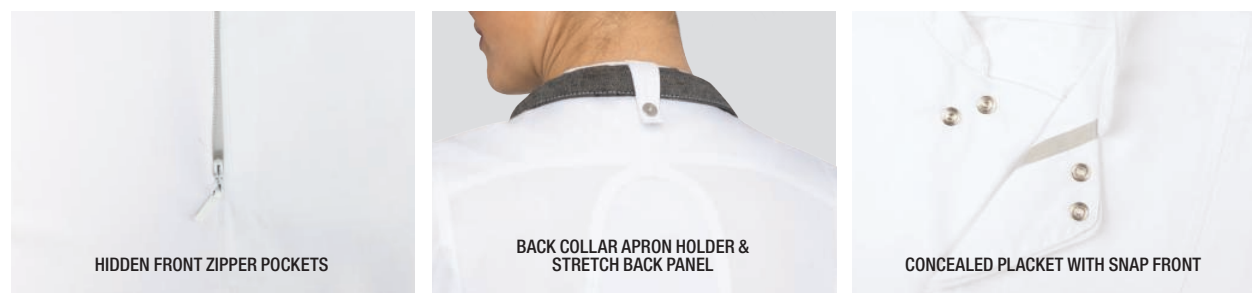




BRISTOL

BLK
black

WHT
white



HIDDEN FRONT ZIPPER POCKETS

BACK COLLAR APRON HOLDER &
STRETCH BACK PANEL

CONCEALED PLACKET WITH SNAP FRONT

BRISTOL EXECUTIVE CHEF COAT

159 gm² / 4.7 oz, 65/35 poly/cotton 'lite' twill fabric, Cool Vent™ sides and back panels, short-sleeve, single-breasted with concealed snap closure, side seam slits, back collar apron holder with engraved snap tab, left sleeve thermometer pocket, hidden front zipper pockets. Women's fit & style available CES02W (not featured).

Available in: Black, White.

CES02 | SIZES: S-3XL **MF 1**



Chef Aiden Byrne, The Church Green, Cheshire, UK



SPRINGFIELD

BLK
black

GRY
grey

INB
ink blue

WHT
white



ENGRAVED BACK COLLAR APRON HOLDER.

COOL VENT™ UNDERARM

HIDDEN ZIPPER CLOSURE

SPRINGFIELD ESSENTIAL CHEF COAT

160 gm² / 4.7 oz, 65/35 poly/cotton 'Lite' twill fabric, Cool Vent™ sides, side seam slits, short-sleeve, single-breasted with zipper, back collar apron holder with fork engraved snap, left sleeve rounded thermometer pocket and right sleeve rounded cell phone/notebook pocket. Women's fit available (see page 42).

Available in: Black, Grey, Ink Blue, White.

BCSZ009 | SIZES: XS-3XL (BLK 4XL, WHT 5XL) **MF 1**



Chef Matt Healy, Leeds UK



Chef Phillip Esteban, CH Projects



Chef Thiago Silva, CHEW Innovation, USA

BLK
black

BLU
blue

GPG
graphite

GRY
grey

WHT
white

HARTFORD ESSENTIAL CHEF COAT

160 gm² / 4.7 oz, 65/35 poly/cotton 'lite' twill fabric, Cool Vent™ sides and side seam slits, single-breasted with two-way separating zipper, roll-up long sleeve with tab, back collar apron holder with engraved snap, left sleeve rounded thermometer pocket and right sleeve rounded cell phone/notebook pocket. Women's fit available BCWLZ005 (see page 39).

Available in: Black, Blue, Graphite, Grey, White.

BCLZ008 | SIZES: XS-3XL (BLK-6XL, GPG-6XL, WHT-6XL) **MF 1**





GRY
grey

WHT
white

CONCEALED SNAP FRONT CLOSURE

LANSING ESSENTIAL CHEF COAT

160 gm² / 4.7 oz, 65/35 poly/cotton 'Lite' twill fabric, Cool Vent™ back/side panels, roll-up long sleeve with tab, side seam slits, concealed snap front and left sleeve thermometer pocket. Women's fit available BCWMC007 (see page 39).

Available in: Grey, White.

BCMC010 | SIZES: XS-3XL **CF 1**



BLK
black

WHT
white

ROLL-UP LONG SLEEVE WITH BUTTON TAB

WHITE COLLAR APRON HOLDER

BOWDEN ESSENTIAL CHEF COAT

160 gm² / 4.7 oz, 65/35 poly/cotton 'lite' twill fabric, Cool Vent™ side panels, side seam slits, roll-up long sleeve with tab, white collar apron holder with fork engraved snap, left sleeve thermometer pocket, right sleeve pocket, inner pocket.

Available in: White, Black.

CBC01 | SIZES: S-3XL **MF 1**





BLK
black

WHT
white

GRY
grey

MONTREAL ESSENTIAL CHEF COAT

160 gm² / 4.7 oz, 65/35 poly/cotton 'lite' twill fabric, Cool Vent™ panel, short-sleeve, cloth-covered buttons, left chest patch and thermometer pockets.

Available in: Black, White, Grey.

JLCV | SIZES: XS-5XL (WHT-6XL) **CF 1**

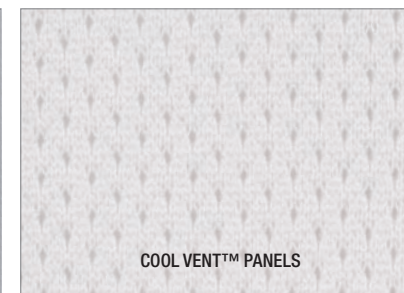


Chef Phil Esteban, The Cork & Craft



BLK
black

WHT
white



CALGARY ESSENTIAL CHEF COAT

160 gm² / 4.7 oz, 65/35 poly/cotton 'lite' twill fabric, Cool Vent™ panel, turn-back cuffs, cloth-covered buttons, left chest patch and thermometer pockets.

Available in: Black, White.

JLLS | SIZES: XXS-5XL **CF 1**



Chef Ramon Douglas, RF Catering & Chatsworth Charter High School, Los Angeles, USA

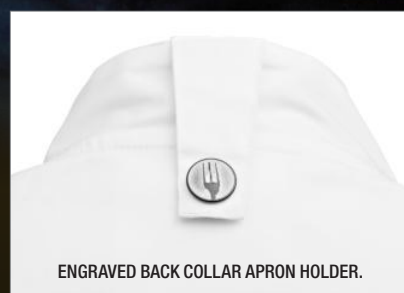


BLK
black

WHT
white



HIDDEN METAL SNAP CLOSURE.



ENGRAVED BACK COLLAR APRON HOLDER.



COOL VENT™ UNDERARM.

CANNES ESSENTIAL CHEF COAT

160 gm² / 4.7 oz 65/35 poly/cotton single-breasted short sleeve coat with snap closure, Cool Vent™ underarm panels, back-collar apron holder with engraved snap tab, side-seam slits, left sleeve thermometer pocket.

Available in: Black, White.

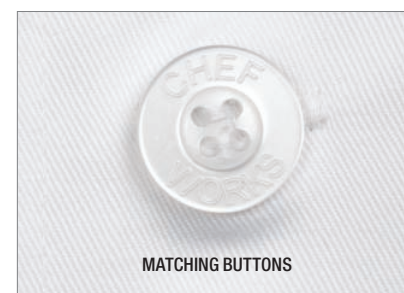
SSSN | SIZES: XS-3XL **MF 1**



Chef Laszlo, Hypha Restaurant (now closed), Chester, UK



WHT
white



MATCHING BUTTONS



TURN-BACK CUFFS

LE MANS ESSENTIAL CHEF COAT

210 gm² / 6.2 oz, 65/35 poly/cotton, turn-back cuffs, matching translucent buttons, left chest patch and thermometer pockets. Women's fit available in black (BCW004-BLK) and white (BCW004-WHT) not featured.

Available in: White.

WCCW | SIZES: XXS-8XL **CF 1**



BLK
black

CHAMBERY ESSENTIAL CHEF COAT

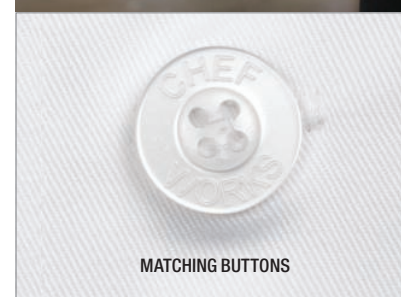
210 gm² / 6.2 oz, 65/35 poly/cotton, short-sleeve, matching branded buttons, left chest patch pocket and thermometer pocket.

Available in: Black.

BLSS | SIZES: XS-5XL **CF 1**



WHT
white



MATCHING BUTTONS

VOLNAY ESSENTIAL CHEF COAT

210 gm² / 6.2 oz, 65/35 poly/cotton, short-sleeve, matching translucent branded buttons, left chest patch and thermometer pockets.

Available in: White.

PCSS | SIZES: XS-5XL **CF 1**



Women's Coat Collection

Featuring expertly tailored coats cut to accommodate and complement the female shape. With elements such as slimmed side panels and tapered waists, this collection celebrates the female form with both style and performance

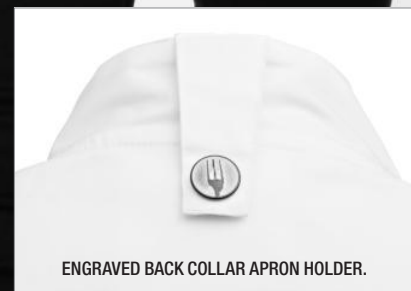
Chef Kalissa Krejcik, C&M Café, USA
Women's Roxby Chef Coat: CES02W-WHT

New

TULUM



SIDE SLITS WITH KNITTED MESH



ENGRAVED BACK COLLAR APRON HOLDER.



THERMOMETER POCKET ON LEFT SLEEVE



Women's Coat Collection

TULUM



BLK
black

WHT
white

GRY
grey

TULUM FEMALE CHEF COAT

170 gm²/5.0 oz. 100% recycled polyester knit mesh. 176 gm² /5.2 oz. 31/31/38 recycled poly/poly/cotton. Raglan sleeve with snap front closure. Left sleeve thermometer pocket with side slits, back collar apron tab and colour-matching Cool Vent™ knit mesh.

Available in: Black, White, Grey.

CBS01W | SIZE: XS-3XL **SF 1**

STRETCH

CoolVent

FLEX
SERIES

BLK
black

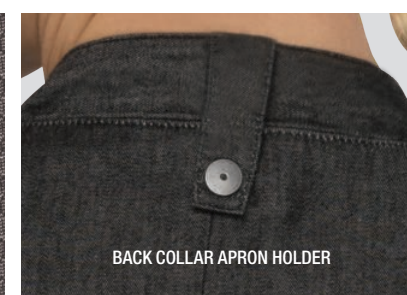
GRAMERCY EXECUTIVE CHEF COAT

163 gm² / 4.8 oz, 100% cotton denim fabric, single-breasted with two-way separating zipper, roll-up long sleeve with tab, back collar apron holder with fork engraved snap, contrast double-stitching throughout, French cuffs, left sleeve rounded thermometer pocket and right sleeve rounded cell phone/notebook pocket with hidden earphone hole. Unisex version available EXDZ001 (see page 20).

Available in: Black.

EXWDZ002 | SIZES: XS-2XL **SF 1**

STRETCH BACK & SIDE PANELS



BACK COLLAR APRON HOLDER

BLK
black

CHELSEA EXECUTIVE CHEF COAT

163 gm² / 4.8 oz, 100% cotton denim with stretch back & side panels, short-sleeve, single-breasted with snap closure, side seam slits, back collar apron holder with engraved snap tab, left sleeve thermometer pocket, right sleeve pocket, curved front hip pockets. Unisex style available, CES01 (see page 22).

Available in: Black.

CES05W | SIZES: XS-2XL **SF 1**



BLK
black

GRY
grey

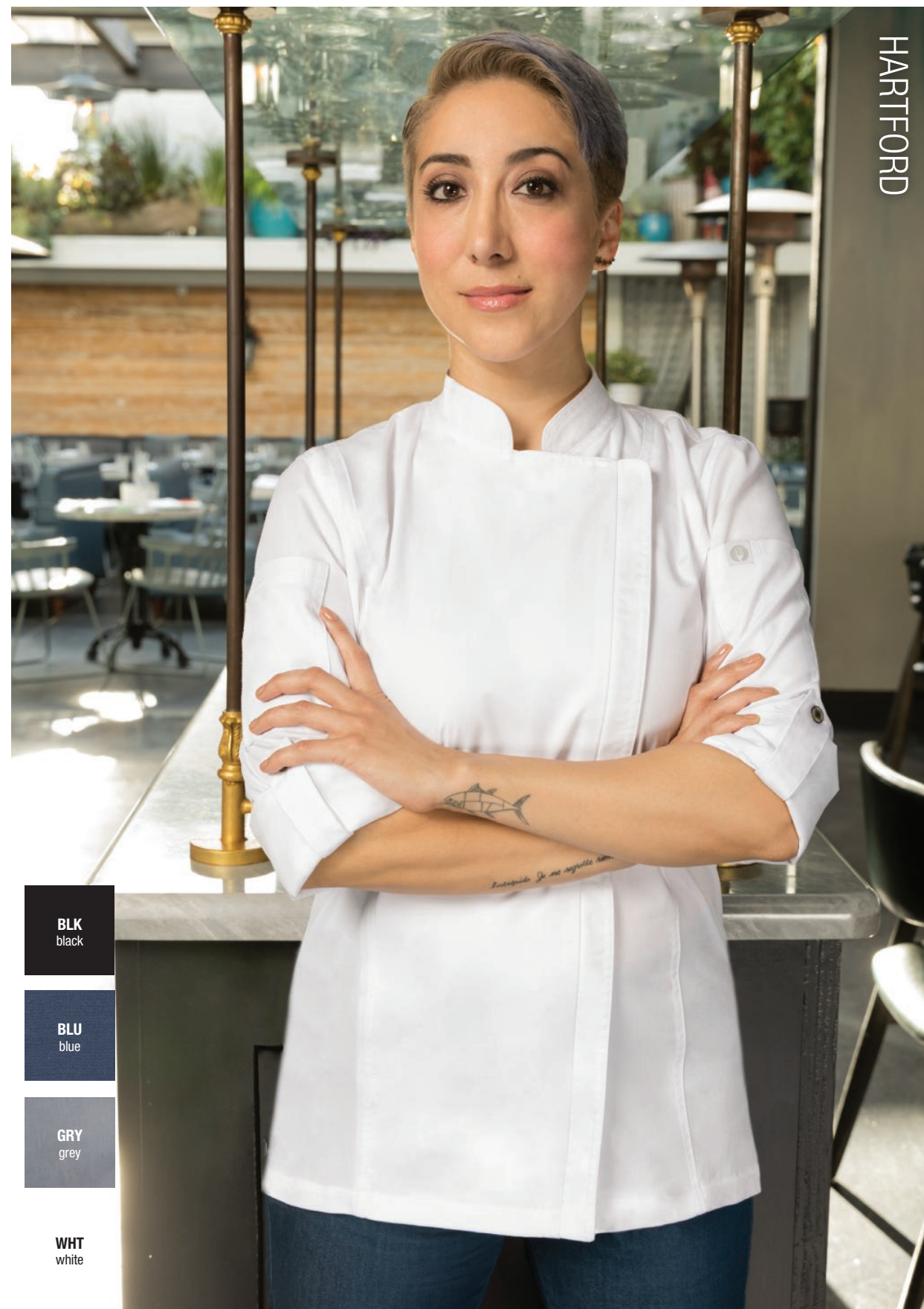
WHT
white

SPRINGFIELD ESSENTIAL CHEF COAT

160 gm² / 4.7 oz, 65/35 poly/cotton 'Lite' twill fabric, Cool Vent™ sides, side seam slits, short-sleeve, single-breasted with two-way zipper, back collar apron holder with engraved snap, left sleeve rounded thermometer and right sleeve rounded cell phone/notebook pockets. Unisex style available BCSZ009 (see page 25).

Available in: Black, Grey, White.

BCWSZ006 | SIZES: XS-2XL **SF 1**



BLK
black

BLU
blue

GRY
grey

WHT
white

HARTFORD ESSENTIAL CHEF COAT

160 gm² / 4.7 oz, 65/35 poly/cotton 'Lite' twill fabric, Cool Vent™ sides and side seam slits, single-breasted with two-way separating zipper, roll-up long sleeve with tab, back collar apron holder with engraved snap, left sleeve rounded thermometer pocket and right sleeve rounded cell phone/notebook pocket. Unisex style available BCLZ008 (see page 27).

Available in: Black, Blue, Grey, White.

BCWLZ005 | SIZES: XS-3XL **SF 1**





GRY
grey

WHT
white

CONCEALED SNAP FRONT CLOSURE

COOL VENT™ SIDES

LANISING ESSENTIAL CHEF COAT

160 gm² / 4.7 oz, 65/35 poly/cotton 'Lite' twill fabric, Cool Vent™, back/side panels, roll-up long sleeve with tab, side seam slits, concealed snap front, left sleeve thermometer pocket. Unisex style available BCMC010 (see page 26).

Available in: Grey, White.

BCWMC007 | SIZES: XS-2XL **SF 1**



SOFIA



CLOTH-COVERED BUTTONS

THERMOMETER POCKET

SOFIA ESSENTIAL CHEF COAT

160 gm² / 4.7 oz, 65/35 poly/cotton 'lite' twill fabric, turn-back cuffs, side seam slits, cloth-covered buttons, thermometer pocket

Available in: White.

LWLJ | SIZES: XS-2XL **CF 1**

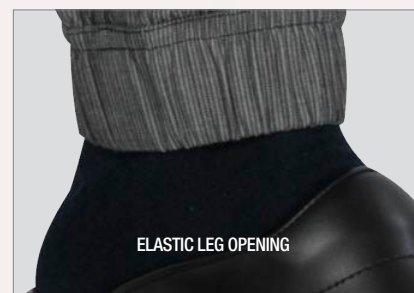




Trouser Collection

Utilitarian at its core with contemporary and tailored options, our Trouser Collection has a style and fit that will work for you. Functionality and comfort for both the back and front-of-house teams

BWS
black/white
stripe



ELASTIC LEG OPENING



BACK INSET POCKET
W/ BUTTON CLOSURE



FRONT INSET POCKETS W/ RIVETED ENDS
AND COINS POCKET



JOGGER 257

166 gm² / 4.9 oz, 76/24 cotton/poly, elastic waistband, internal flat drawstring, zipper fly, front inset pockets, coins pocket, elastic leg opening, back yoke, a back inset pocket with button, belt loops.

Available in: Black/White Stripe.

PBE01 | **SIZES:** XS-3XL **LENGTH:** 31 inch **MT 1**



GRAMERCY 261

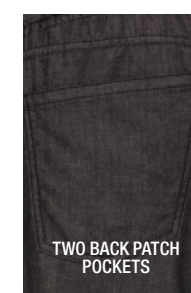
BLK
black



ELASTIC WAISTBAND
W/ DRAWSTRING



FRONT POCKETS W/
RIVETED ENDS



TWO BACK PATCH
POCKETS

GRAMERCY 261

163 gm² / 4.8 oz, 100% cotton, elastic waistband with drawstring, zipper fly, front pockets with riveted ends, coins pocket, two back patch pockets, belt loops.

Available in: Black.

PEE01 | **SIZES:** XS-3XL **LENGTH:** 31 inch **MT 1**



ChefWorks
URBAN
COLLECTION



BETTER BUILT™ BAGGY

BLK
black



ONE BACK INSET
POCKET W/
BUTTON CLOSURE



ONE BACK INSET
POCKET W/ BUTTON
CLOSURE

BETTER BUILT™ BAGGY

185 gm² / 5.5 oz, 65/35 poly/cotton, built-in flat drawstring, elastic waistband, zipper fly, built-in cell phone, two side seam and two back patch pockets.

Available in: Black.

BSOL | **SIZES:** XS-4XL **LENGTH:** 32.5 inch **MF 1**

CARGO

BLK
black

ELASTIC WAISTBAND WITH DRAWSTRING

2 BACK PATCH POCKETS

2 SIDE CARGO POCKETS
W/ VELCRO® CLOSURES

CARGO

245 gm² / 7.2 oz, 100% cotton, new and improved slimmer fit, elastic waistband with drawstring, full zipper fly, two side seam, two back and two side cargo pockets with Velcro® closures.

Available in: Black.

PC001 | SIZES: XS-4XL LENGTH: 32 inch **CF 1**

ESSENTIAL PRO

BLK
black

TWO-BUTTON CLOSURE

WIDE BELT LOOPS

2 BACK PATCH & CELL
PHONE POCKETS
BUTTON CLOSURE

ESSENTIAL PRO

185 gm² / 5.5 oz, 65/35 poly/cotton, double-needle stitch detail, flat waistband, wide belt loops, two-button closure, zipper fly, two side seam pockets, two back patch and back inset cell phone pockets.

Available in: Black.

PS005 | SIZES: 28-48 LENGTH: 32.5 inch **MF 2**

COOL VENT™ BAGGY

BLK
black

ELASTIC WAISTBAND
W/ DRAWSTRING

KNEE COOL VENT™
DETAIL

REAR COOL VENT™
PATCH POCKET

COOL VENT™ BAGGY

160gm² / 4.7 oz, 65/35 poly/cotton 'Lite' twill fabric, Cool Vent™ side seam, back-of-knee and two back pockets inserts, elastic drawstring waistband, zipper fly, two side seam pockets.

Available in: Black.

CVBP | SIZES: XS-3XL L: 32.5 inch **MF 1**





BLK
black



CHR
charcoal

BLK
black



ELASTIC WAISTBAND
W/ DRAWSTRING



FRONT POCKETS W/
RIVETED ENDS



2 BACK PATCH
POCKETS



ELASTIC WAISTBAND
W/ DRAWSTRING



2 SIDE SEAM POCKET

LIGHTWEIGHT BAGGY

160 gm² / 4.7 oz, 65/35 poly/cotton 'lite' twill fabric, double-needle topstitching, curved elastic flat drawstring waistband, zipper fly, cell phone pocket, two side seam and two oversized back pockets.

Available in: Black.



BBLW | SIZES: XS-3XL LENGTH: 32.5 inch **MF 1**

LIGHTWEIGHT SLIMFIT / WOMEN'S LIGHTWEIGHT SLIMFIT

159 gm² / 4.7 oz, 65/35 poly/cotton 'Lite' twill fabric, contrast elastic waistband with internal drawstring, two front set-in pockets.

Available in: Black, Charcoal.



PBN01 PBN01W | SIZES: XS-3XL LENGTH: 31 inch **MF 1**



SCH
small black/
white check

BLK
black

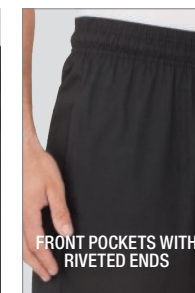


SCH
small black/
white check

BLK
black



ZIPPER FLY



FRONT POCKETS WITH
RIVETED ENDS



2 BACK PATCH
POCKETS



2 SIDE SEAM POCKET



ONE BACK
POCKET



ELASTIC WAISTBAND
WITH DRAWSTRING

ESSENTIAL BAGGY W/ ZIPPER

210 gm² / 6.2 oz, 65/35 yarn-dyed poly/cotton, elastic waistband with drawstring, zipper fly, tapered legs, two side seam and one back pocket.

Available in: NBBZ: Black. NBMZ: Black/White Check.

NBBZ | SIZES: XS-7XL **NBMZ** | SIZES: XS-5XL LENGTH: 32 inch **CF 1**

ESSENTIAL BAGGY

210 gm² / 6.2 oz, 65/35 yarn-dyed poly/cotton, elastic waistband with drawstring, tapered legs, two side seam and one back pocket.

Available in: NBBP: Black. NBCP: Black/ White Check.

NBBP | SIZES: XXS-7XL **NBCP** | SIZES: XXS-8XL LENGTH: 32 inch **CF 1**



WOMEN'S CARGO

BLK
black



WOMEN'S ESSENTIAL BAGGY

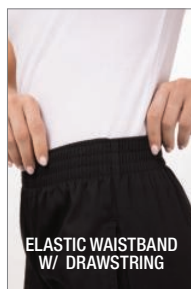
BLK
black



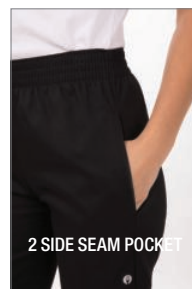
2 SIDE CARGO POCKETS
W/ VELCRO® CLOSURES



2 BACK PATCH POCKETS



ELASTIC WAISTBAND
W/ DRAWSTRING



2 SIDE SEAM POCKET

WOMEN'S CARGO

210 gm² / 6.2 oz, 65/35 poly/cotton, elastic waistband with drawstring, right leg cargo pocket with Velcro® flap, two front and two back pockets with Velcro® flaps.

Available in: Black.

CPWO | SIZES: XS-3XL LENGTH: 31.5" RF 1

WOMEN'S ESSENTIAL BAGGY

210 gm² / 6.2 oz, 65/35 poly/cotton, elastic waistband and two side seam pockets.

Available in: Black.

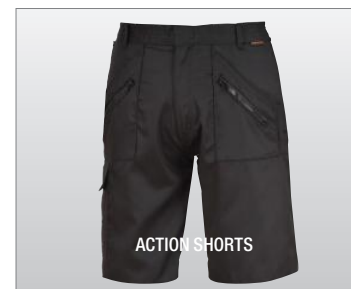
PW005 | SIZES: XS-3XL LENGTH: 31.5" RF 1



ACTION TROUSERS

Black

Navy



ACTION SHORTS



CHINO SHORTS

Black

Cherry Red

Natural

Navy

Slate

White



ASQUITH & FOX®

ACTION TROUSERS

245 gm² / 7.2 oz, 65/35 poly/cotton, reinforced seat and knee pad pockets, twin-stitched seams, belt loops, multi-zip side pockets, thigh pocket with hook and loop fastening, two hip pockets **Wash:** 60°C
Available in: Black, Navy. Also available in: Action Shorts PW103.

PW101 | SIZES: 30R-46L LENGTH: Reg 31". Long 33"

UNISEX CHINO SHORTS

275 gm² / 8.1 oz, 100% cotton twill constructed shorts, flat front with belt loops, two front and two back inset pockets with buttons.

Available in: Black, Cherry Red, Natural, Navy, Slate, White.
Female style available code: AQ061

AQ051 | SIZES: XS - 4XL LENGTH: 9"/23cm



HOUSTON



BRUNSWICK



MEN'S CHINO



WOMEN'S CHINO



HOUSTON FEMALE SLIM LEG CHINOS

97/3 cotton/elastane, slim leg chinos with belt loops, side pockets, twin hip jet pockets, stretch waistband. Matching skirt available, AUSTIN 2302.

Available in: Beige (B), Black (D), Navy (A), Grey (C).

2303 | **SIZES:** 6 - 24 **LENGTH:** Short 27" Reg 29" Long 31" XL 33" Unfinished 36".

BRUNSWICK TAILORED 5 POCKET CHINO

350 gm² 97/3 cotton/elastane chino trouser with stretch waistband, five pockets with metal studs.

Available in: Beige (B), Black (D) Navy (A). Grey (C) (only in Slim and Classic cuts)

8902 | **SIZES:** 28"-42" **LENGTH:** Short 29.5" Reg 31.5" Long 33" Unfinished 36".

MEN'S/UNISEX CHINO

275 gm² / 8.1oz, 100% cotton twill, classic fit, belt loops, two front inset pockets and two inset buttoned back pockets.

Available in: Black, Burgundy, Khaki, Natural, Navy, Royal, Slate, White.

AQ050 | **SIZES:** XS - 4XL. **LENGTH:** Regular 32" Tall 34", Unfinished 34"

WOMEN'S CHINO

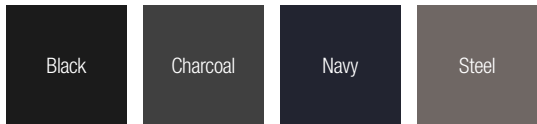
245 gm² / 7.2oz, 98/2 cotton/elastane, tailored fit, belt loops, two front inset and two back inset pockets.

Available in: Black, Khaki, Natural, Navy, Royal, Slate, White.

AQ060 | **SIZES:** 2XS - 2XL **LENGTH:** Regular 30"



PERFORMANCE CHINO JEANS



PERFORMANCE UNISEX CHINO JEANS

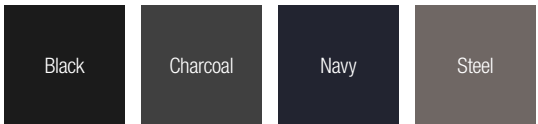
260 gm² / 7.7oz, 63/35/2 poly/cotton/elastane. Two front inset and two back pockets.

Available in: Black, Charcoal, Navy, Steel.

PR560 | SIZES: 30R - 44L LENGTH: Regular 31" Long 34"



WOMEN'S CHINO JEANS



PERFORMANCE WOMEN'S CHINO JEANS

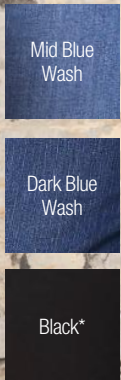
260 gm² / 7.7oz, 63/35/2 poly/cotton/elastane. Two front inset and two back pockets.

Available in: Black, Charcoal, Navy, Steel.

PR570 | SIZES: XS(8) - 5XL(24) LENGTH: Regular 31" Long 34"



KATY



KATY WOMEN'S STRAIGHT JEANS

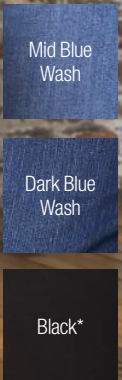
305 gm² / 9oz, 67/31/2 cotton/poly/elastane (*67/31/2 cotton/polyester/elastane), straight fit through leg, mid-rise, traditional five pocket, zip fly and button fastening.

Available in: Black, Dark Blue Wash, Light Blue Wash, Mid Blue Wash

SD011 | SIZES: 6R - 18L LENGTH: Reg 30" Long 32".



LARA



LARA WOMEN'S SKINNY JEANS

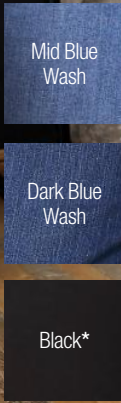
305 gm² / 9oz 98/2 cotton/elastane (*77/21/2 cotton/poly/elastane), classic skinny fit through leg, mid-rise, traditional five pocket styling, belt loops.

Available in: Black, Dark Blue Wash, Light Blue Wash, Mid Blue Wash

SD014 | SIZES: 6R - 18L L: Short 28"(Black & Dk Blue only) Reg 30" Long 32".



LEO STRAIGHT JEANS



LEO STRAIGHT JEANS

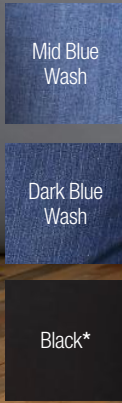
356 gm² / 10.5oz, 99 /1 cotton/elastane (*67/31/2 cotton/polyester/elastane), straight fit, traditional five pocket styling, belt loops.

Available in: Black, Dark Blue Wash, Light Blue Wash, Mid Blue Wash.

SD001 | SIZES: 28 - 40 LENGTH: Reg 31". Long 33".



MAX SLIM JEANS



MAX SLIM JEANS

339 gm² / 10oz, 99/1 cotton/elastane (*73/25/2 cotton/polyester/elastane), slim fit through the leg, traditional five pocket styling detail, belt loops, zip fly and button fastening.

Available in: Black, Dark Blue Wash, Light Blue Wash, Mid Blue Wash.

SD004 | SIZES: 28R - 40L LENGTH: Reg 31". Long 33".

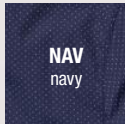




Shirt & Top Collection

Look polished and professional no matter what the kitchen may throw your way. Our line-up of shirts and tops for chefs and hospitality staff offers ultimate comfort, durability and style in an array of classic or modern hues and fits

Largo Short Bib Apron **ABN01W-BLU**
Largo Bib Apron **ABN01-BLU**
Largo Half Bistro Apron **AHN05-BLU**
Apron Neck Strap **XNS05**



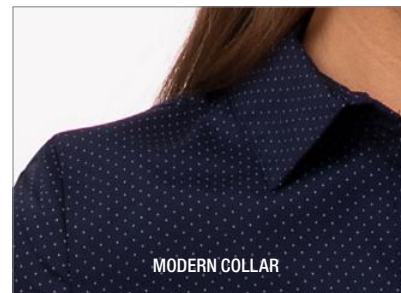
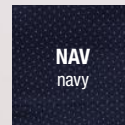
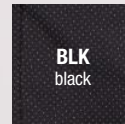
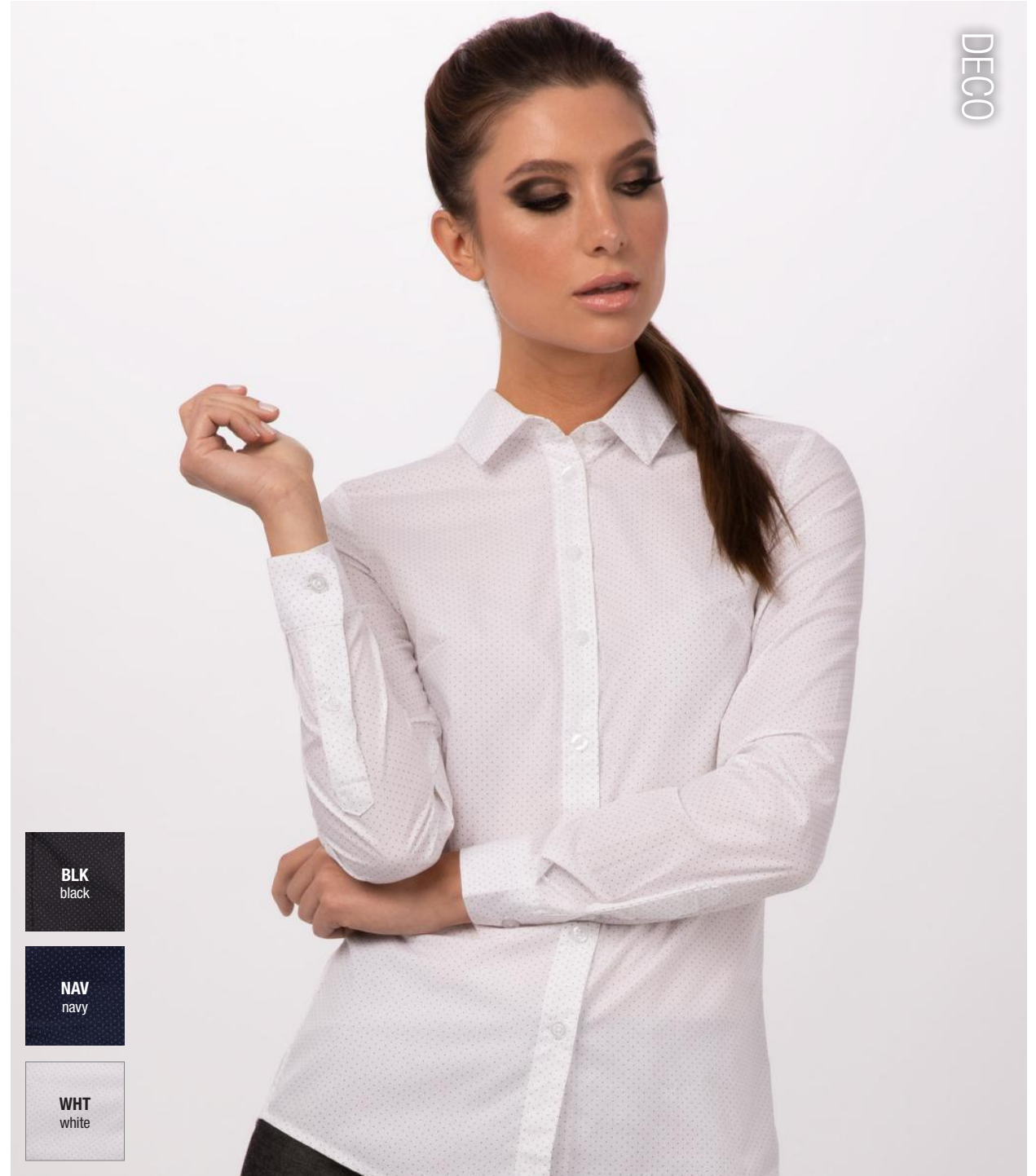
DECO CONTEMPORARY LONG-SLEEVE DOTTED SHIRT

115 gm² / 3.4oz 65/35 poly/cotton dot print, long sleeves, adjustable button cuffs, buttoned gauntlet, pleated back yoke.

Available in: Black, Navy, White.

SFC01 | SIZES: S-4XL **CF 1**

 Chef Works
contemporary
collection



MODERN COLLAR



ADJUSTABLE BUTTON CUFFS

DECO CONTEMPORARY WOMEN'S LONG-SLEEVE DOTTED SHIRT

115 gm² / 3.4oz 65/35 poly/cotton dot print, long sleeves, adjustable button cuffs, buttoned gauntlet, front and back darts.

Available in: Black, Navy, White.

SFC01W | SIZES: XS-3XL **CF 1**

 Chef Works
contemporary
collection



FORMEL



BLK
black

WHT
white

FORMEL CONTEMPORARY MEN'S BANDED COLLAR SHIRT

130 gm² / 3.8 oz, 64/34/2 poly/cotton/elastane, banded collar with button closure tab, adjustable button cuffs, long sleeve, concealed button placket, back yoke. Women's style available SFB01W (see page 63).

Available in: Black, White.

SFB01 | SIZES: S-4XL **MF 1**

 Chef Works
contemporary
collection



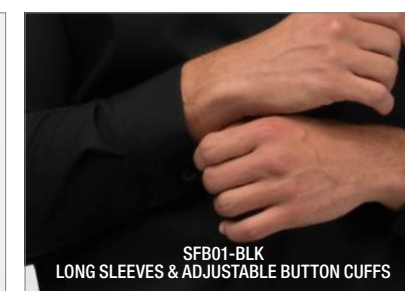
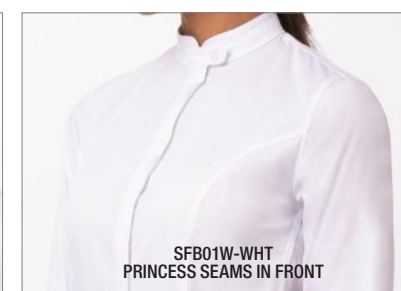
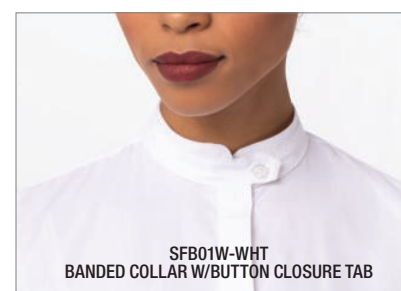
Shirt & Top Collection

FORMEL



BLK
black

WHT
white



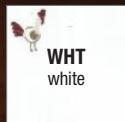
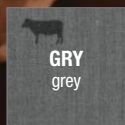
FORMEL CONTEMPORARY WOMEN'S BANDED COLLAR SHIRT

130 gm² / 3.8 oz, 64/34/2 poly/cotton/elastane, banded collar with button closure tab, concealed button placket, adjustable button cuffs, long sleeve, princess seams front and back, back yoke. Unisex style available SFB01 (see page 62).

Available in: Black, White.

SFB01W | SIZES: XS-3XL **MF 1**

 Chef Works
contemporary
collection



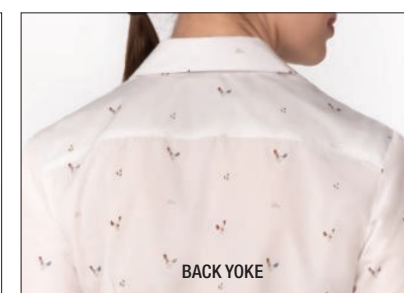
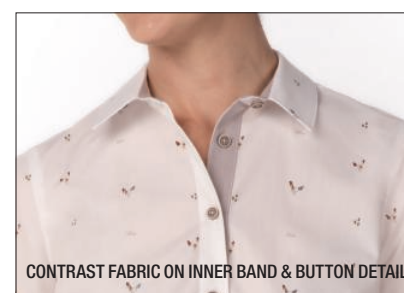
OMAHA URBAN MEN'S SHORT-SLEEVE SHIRT

115 gm² White & 119 gm² Grey, 65/35 poly/cotton, short sleeves, left chest pocket, back yoke with pleats, matching button front, contrast collar band, contrast inner-sleeve hem. Women's style available SHC10W (see page 65)

Available in: Grey, White.

SHC10 | SIZES: S-4XL CF 1

Chef Works
URBAN
COLLECTION



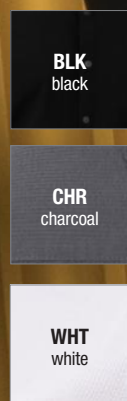
OMAHA URBAN WOMEN'S SHORT-SLEEVE SHIRT

115 gm² White & 119 gm² Grey, 65/35 poly/cotton, short sleeves, matching button front, contrast collar band, inner-sleeve contrast hem, Men's style available SHC10 (see page 64).

Available in: Grey, White.

SHC10W | SIZES: XS-3XL CF 1

Chef Works
URBAN
COLLECTION

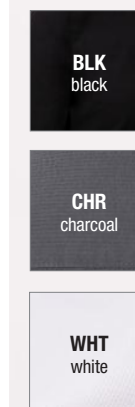
**SEERSUCKER CONTEMPORARY SHORT-SLEEVE SHIRT**

136 gm² / 4oz 65/35 poly/cotton short sleeve banded collar snap front shirt, left sleeve inset pocket, back yoke with darts, side-seam slits, back collar snap-tab apron holder.

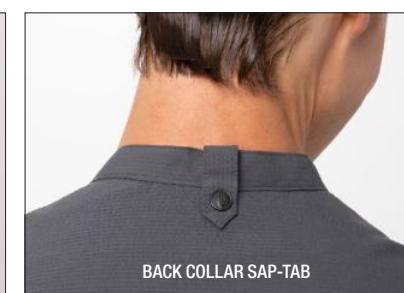
Available in: Black, Charcoal, White.

SHC08 | SIZES: S-4XL **CF 1**

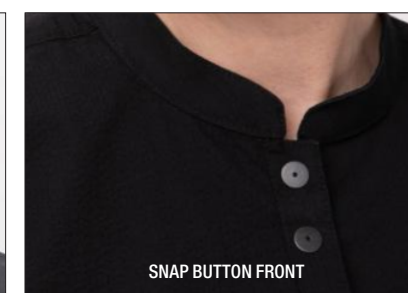
 Chef Works
contemporary
collection



LEFT SLEEVE INSET POCKET



BACK COLLAR SAP-TAB



SNAP BUTTON FRONT

SEERSUCKER CONTEMPORARY WOMEN'S SHORT-SLEEVE SHIRT

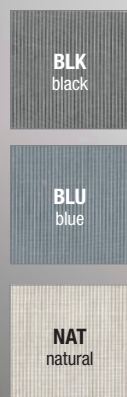
Product text: 136 gm² / 4oz 65/35 poly/cotton short sleeve banded collar snap front shirt, left sleeve inset pocket, front darts, back yoke with darts, side-seam slits, back collar snap-tab apron holder.

Available in: Black, Charcoal, White.

SHC08W | SIZES: XS-3XL **CF 1**

 Chef Works
contemporary
collection





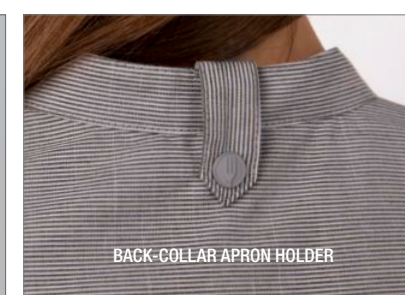
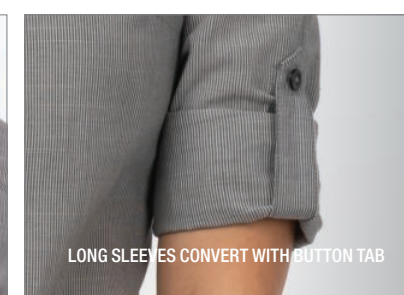
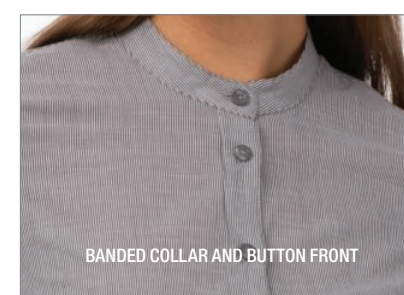
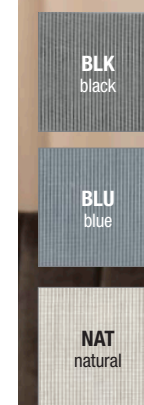
VERISMO CONTEMPORARY MEN'S LONG-SLEEVE SHIRT

89 gm² / 2.6 oz, 62/38 poly/cotton, fine-stripe fabric, long sleeves with adjustable cuffs, converting to short sleeves with button tabs, banded collar, button front, back-collar apron holder, back yoke with pleats. Women's style available SFB02W (see page 69).

Available in: Black, Blue, Natural.

SFB02 | SIZES: S-4XL **CF 1**

Chef Works[®]
contemporary
collection



VERISMO CONTEMPORARY WOMEN'S LONG-SLEEVE SHIRT

89 gm² / 2.6 oz, 62/38 poly/cotton, fine-stripe fabric, long sleeves with adjustable cuffs, converting to short sleeves with button tabs, banded collar, button front, back-collar apron holder, front darts. Unisex style available SFB02 (see page 68).

Available in: Black, Blue, Natural.

SFB02W | SIZES: XS-3XL **CF 1**

Chef Works[®]
contemporary
collection





BLU
blue

GRY
grey

TAU
taupe

VOCE CONTEMPORARY MEN'S LONG-SLEEVE SHIRT

106 gm² / 3.1 oz, 60/40 poly/cotton, wide stripe fabric, long sleeves with adjustable cuffs, converts to short sleeves with button tabs, banded collar, button front, back yoke with pleats, back-collar apron holder. Women's style available SFB03W (see page 71).

Available in: Blue, Grey, Taupe.

SFB03 | SIZES: S-4XL **CF 1**

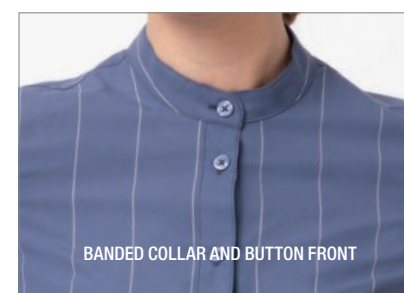
Chef Works
contemporary
collection



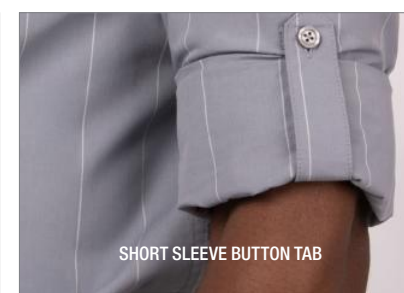
BLU
blue

GRY
grey

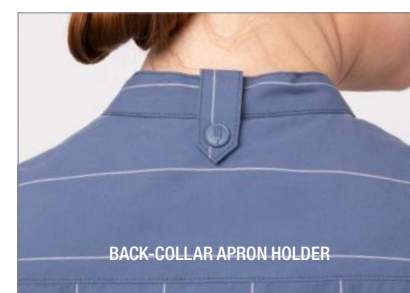
TAU
taupe



BANDED COLLAR AND BUTTON FRONT



SHORT SLEEVE BUTTON TAB



BACK-COLLAR APRON HOLDER

VOCE CONTEMPORARY WOMEN'S LONG-SLEEVE SHIRT

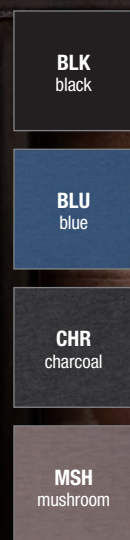
106 gm² / 3.1 oz, 60/40 poly/cotton, wide stripe fabric, long sleeves with adjustable cuffs, converts to short sleeves with button tabs, banded collar, button front, back yoke with pleats, back-collar apron holder. Unisex style available SFB03 (see page 70).

Available in: Blue, Grey, Taupe.

SFB03W | SIZES: XS-3XL **CF 1**

Chef Works
contemporary
collection



**DEFINITY URBAN WOMEN'S KNIT SHIRT**

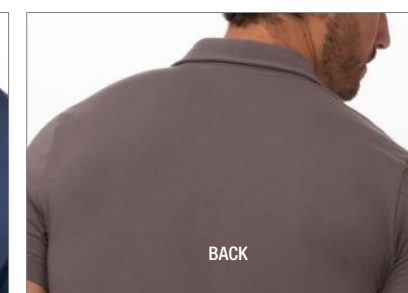
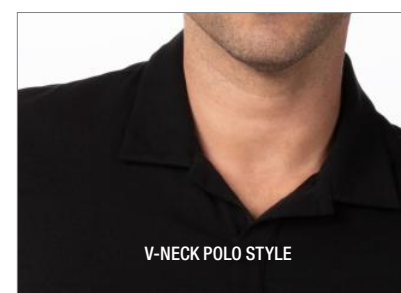
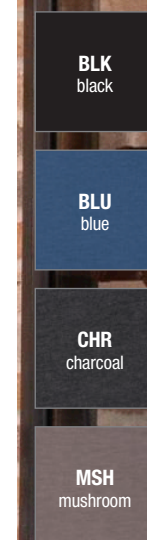
170 gm² / 5 oz, 57/38/5 cotton/poly/elastane, V-neck, polo style, $\frac{3}{4}$ sleeve and fitted style. Unisex style available TSME (see page 73).

Available in: Black, Blue, Charcoal, Mushroom.

TSWO | SIZES: XS-3XL **FF 1**

STRETCH

ChefWorks
URBAN
COLLECTION

**DEFINITY URBAN UNISEX KNIT SHIRT**

170 gm² / 5 oz, 57/38/5 cotton/poly/elastane, V-neck, polo style, short sleeves and fitted style. Women's style available TSWO (see page 72).

Available in: Black, Blue, Charcoal, Mushroom.

TSME | SIZES: S-4XL **FF 1**

STRETCH

ChefWorks
URBAN
COLLECTION



CHO
chocolate



SBE
strong blue



CHP
chili pepper

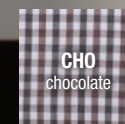
MODERN GINGHAM SHIRT

110 gm² / 3.2 oz, 65/35 yarn-dyed poly/cotton, back yoke with inverted pleat, contrast fabric on inner sleeve band, top right placket and inner collar band, long-sleeve with two-button cuffs, left chest patch pocket. Women's fit available SHC05W (see page 73).

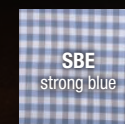
Available in: Chocolate, Strong Blue, Chili Pepper.

SHC05 | SIZES: S-3XL **CF 1**

Chef Works
URBAN
COLLECTION



CHO
chocolate



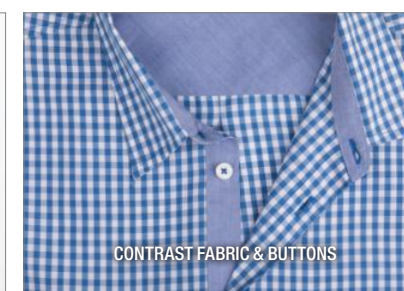
SBE
strong blue



CHP
chili pepper



CONTRAST CUFF



CONTRAST FABRIC & BUTTONS



BACK YOKE WITH INVERTED PLEAT

MODERN GINGHAM WOMEN'S SHIRT

110 gm² / 3.2 oz, 65/35 yarn-dyed poly/cotton, back yoke with inverted pleat, contrast fabric on inner sleeve band, top right placket and inner collar band, long-sleeve with two-button cuffs. Unisex fit available SHC05 (see page 74).

Available in: Chocolate, Strong Blue, Chili Pepper.

SHC05W | SIZES: XS-2XL **CF 1**

Chef Works
URBAN
COLLECTION



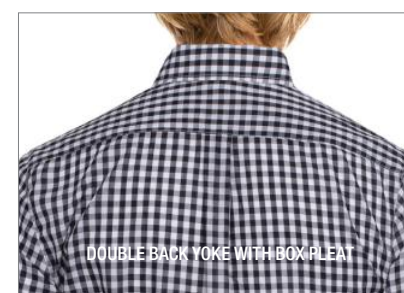
GINGHAM SHIRT

110 gm² / 3.2 oz, 65/35 yarn-dyed poly/cotton poplin, button-down collar, long-sleeve with two-button cuffs, double back yoke with box pleat, six-button placket, left chest pocket. Women's fit available W500 (see page 77).

Available in: Black, Dark Navy, Red.

D500 | SIZES: S-3XL **CF 1**

Chef Works
URBAN
COLLECTION



GINGHAM WOMEN'S SHIRT

110 gm² / 3.2 oz, 65/35 yarn-dyed poly/cotton poplin, button-down collar, long-sleeve with two-button cuffs, double back yoke with box pleat and six-button placket, left chest pocket. Unisex fit available D500 (see page 76).

Available in: Black, Dark Navy, Red.

W500 | SIZES: XS-2XL **CF 1**

Chef Works
URBAN
COLLECTION

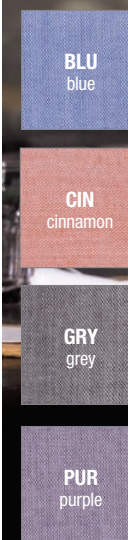


MODERN CHAMBRAY SHIRT

115 gm² / 3.4 oz, 65/35 poly/cotton, back yoke with pleats, side hem detail, roll-up long sleeves with button tab, two-button cuff, buttoned front. Women's fit available SHC06W (see page 79).

Available in: Blue, Cinnamon, Grey, Purple.

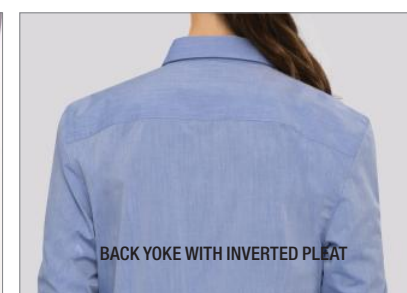
SHC06 | SIZES: S-3XL **MF 1**



BUTTON CLOSURE



ROLLED SLEEVE AND TAB



BACK YOKE WITH INVERTED PLEAT

MODERN CHAMBRAY WOMEN'S SHIRT

115 gm² / 3.4 oz, 65/35 poly/cotton, back yoke, side hem detail, roll-up long sleeves with button tab, button front. Unisex fit available SHC06 (see page 78).

Available in: Blue, Cinnamon, Grey, Purple.

SHC06W | SIZES: XS-2XL **MF 1**





DUR
dusty
rose

ECR
ecru

GRM
green
mist

GRY
grey

CHAMBRAY SHIRT

135 gm² / 4 oz, 60/40 cotton/poly, anti-wrinkle finish, back yoke with boxed pleat, roll-up long sleeve with button tab, faux horn buttons and left sleeve pocket. Women's fit available SLWCH002 (see page 81).

Available in: Dusty Rose, Ecru, Green Mist, Grey.

SLMCH005 | SIZES: XS-3XL **CF 1**

Chef Works
URBAN
COLLECTION

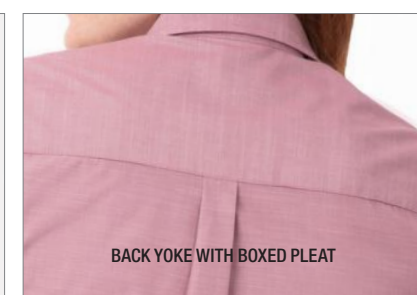


DUR
dusty
rose

ECR
ecru

GRM
green
mist

GRY
grey



CHAMBRAY WOMEN'S SHIRT

135 gm² / 4 oz, 60/40 cotton/poly, anti-wrinkle finish, back yoke with boxed pleat, roll-up long sleeve with button tab, faux horn buttons and left sleeve pocket. Unisex fit available SLMCH005 (see page 80).

Available in: Dusty Rose, Ecru, Green Mist, Grey.

SLWCH002 | SIZES: XS-2XL **CF 1**

Chef Works
URBAN
COLLECTION

PILOT



BLK
black

GRY
grey

PILOT SHIRT

130 gm² / 3.8 oz, 64/34/2 poly/cotton/elastane, roll-up long sleeve with button tab, double back yoke, buttoned front and two-button cuffs and two front pockets with flaps. Women's fit available WPDS (see page 83).

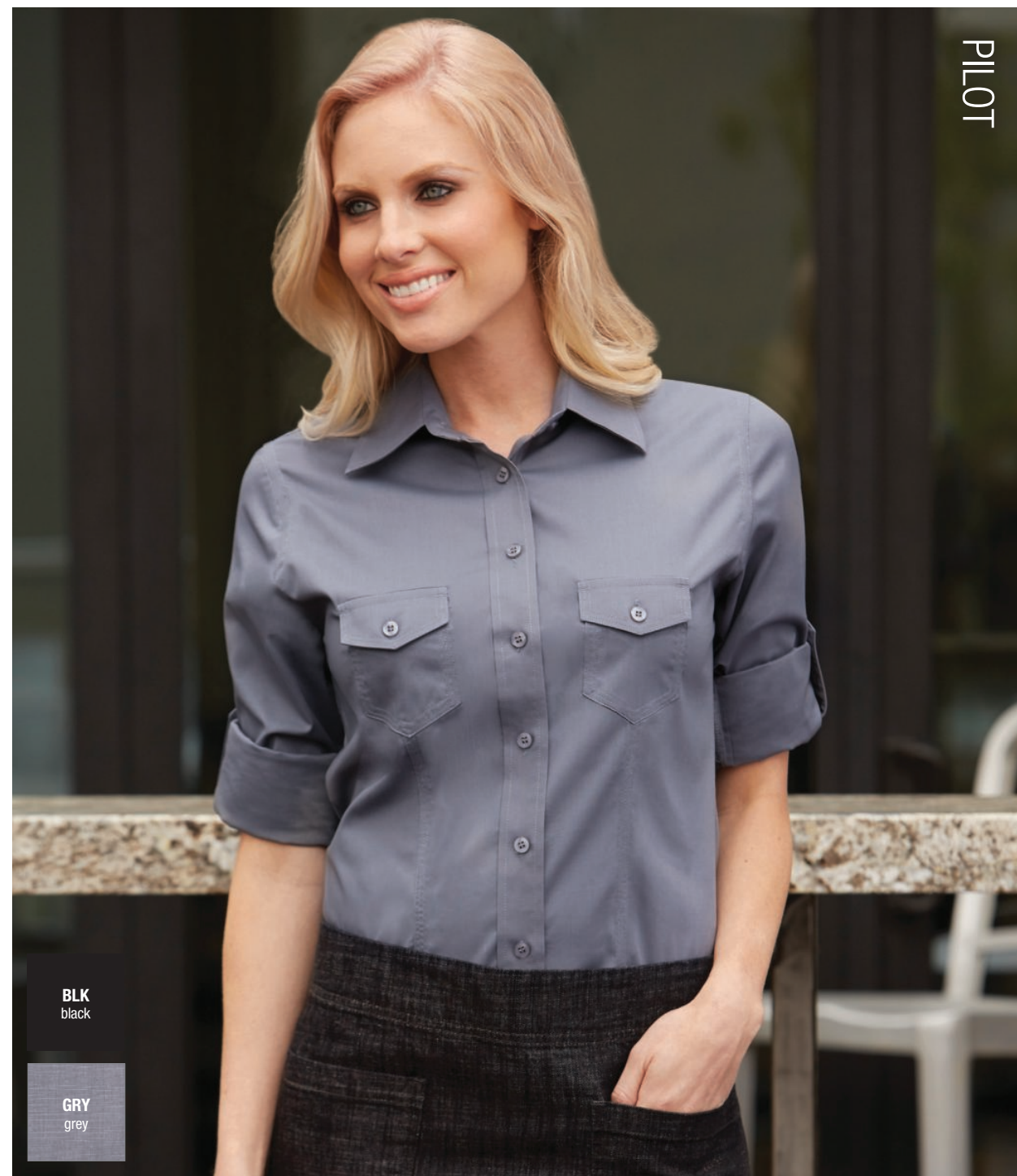
Available in: Grey, Black.

DPDS | SIZES: S-2XL **CF 1**



Shirt & Top Collection

PILOT



BLK
black

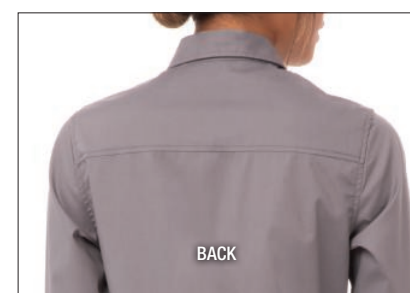
GRY
grey



BUTTONED CHEST POCKETS



ROLLED SLEEVE WITH BUTTON TAB



BACK

WOMEN'S PILOT SHIRT

130 gm² / 3.8 oz, 64/34/2 poly/cotton/elastane, roll-up long sleeve with button tab, double back yoke, buttoned front and two-button cuffs and two front pockets with flaps. Unisex fit available DPDS (see page 82).

Available in: Grey, Black.

WPDS | SIZES: XS-2XL **SF 1**



OXFORD

WHT
white

OXFORD SHIRT & WOMEN'S OXFORD SHIRT
110 gm² / 3.8 oz, 50/50 poly/cotton poplin, button-down collar, long-sleeve with two-button cuffs, double back yoke with box pleat, six-button placket and left chest pocket. Unisex D500. Women's fit W500.
Available in: White.

D500 | SIZES: XS-5XL **CF 1**

W500 | SIZES: XXS-3XL **CF 1**



COOL VENT™ COOK / UNIVERSAL

BLU
blue

BLK
black

GRY
grey

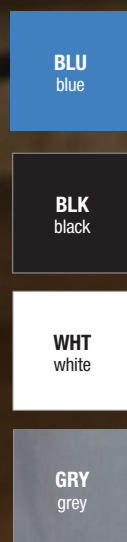
WHT
white

COOL VENT™ COOK / UNIVERSAL SHIRT
155 gm² / 4.6 oz, 65/35 poly/cotton, Cool Vent™ panels under arms and down sides, matching buttons and left chest patch pocket. Women's fit available CSWV (see page 86).

Available in: Blue, Black, Grey, White.

CSCV (BLK) SIZES: XS-5XL | **CSMV** (GRY, BLU) **CSCV** (WHT) SIZES: XS-5XL **CF 1**





UNIVERSAL WOMEN'S SHIRT

155 gm² / 4.6 oz, 65/35 poly/cotton, fitted style, Cool Vent™ panels down both sides, triple topstitching and matching buttons. Unisex fit available CSCV + CSMC + CSMV-BLU (see page 85).

Available in: Blue, Black, Grey, White.

CSWV | SIZES: XS-2XL **SF 1**



BLM
black/grey



UNIVERSAL CONTRAST WOMEN'S SHIRT

155 gm² / 4.6 oz, 65/35 poly/cotton, fitted style, Cool Vent™ panels down both sides, triple contrast topstitching and matching buttons.

Available in: Black/Grey.

CSWC | SIZES: XS-2XL **SF 1**





WHT
white

GRANDAD LONG SLEEVE SHIRT

115 gm², 65/35 poly/cotton, double button cuff and sleeve guard. Typical banded grandad collar with top button fastening. Easycare fabric. Wash at 40°C.

Available in: White.

PR258 | SIZES: XS-3XL

PREMIER®



A
denim

BANFF WOMEN'S SHIRT

140g 100% cotton, tailored fit, long sleeves, faux horn buttons, contrast button detailing, easy iron.

Available in: Denim.

2323A | SIZES: 6R - 24R

BROOK
TAVERNER
SINCE 1912

JASPER SHIRT

140g 100% cotton, tailored fit, long sleeves, chest pocket with button, faux horn buttons, contrast button detailing, easy iron.

Available in: Denim.

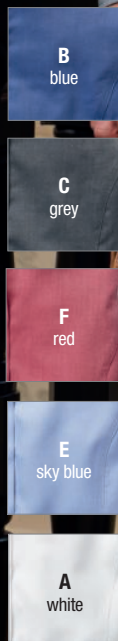
7886A | SIZES: 14"-20"

BROOK
TAVERNER
SINCE 1912



TORONTO

ASPEN



TORONTO SHIRT

125g 60/40 cotton/poly, tailored fit Royal Oxford shirt with button down collar, French placket, long sleeves and contrast detailing.

Available in: Blue (B), Grey (C), Red (E), Sky (D), White (A).

7882 | SIZES: 14"-20"



ASPEN WOMEN'S SHIRT

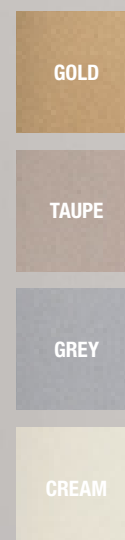
125g 60/40 cotton/poly, tailored fit Royal Oxford shirt with French placket, long sleeves and contrast detailing.

Available in: Blue (B), Grey (C), Red (E), Sky (D), White (A).

2319 | SIZES: 6R - 24R



RAVENNA SATIN BLOUSE



RAVENNA SATIN BLOUSE

97% Polyester, 3% Elastane - high stretch, easy iron. Semi-fitted, half sleeve, round neck.

Available in: Cream, Grey, Taupe, Gold.

2362 | SIZES: 6R - 26R





ALBA SLIM FIT SHIRT
120 gm² 55/45 cotton/poly, slim fit, long sleeve with single cuff, twin rear darts, semi cutaway collar and easy iron. Classic fit RAPINO 7539 also available.
Available in: Black (D), Blue (E), Grey (G), Lilac (F), Navy (H), White (A).
7640 | **SIZES:** 14"-18"



PALENA BLOUSE
120 gm² 55/45 cotton/poly, semi-fitted, long sleeve with single two button cuff and easy iron.
Available in: Black (D), Blue (E), Lilac (F), White (A). (For Grey (G), Navy (H) ask for PARMA 2295).
2214 | **SIZES:** 4 - 30



SELENE SEMI-FITTED BLOUSE
115 gm² 65/35 poly/cotton, semi-fitted easy to iron women's shirt with two button cuff and classic button up collar, machine washable at 40°.
Available in: Blue (B), White (A).



2270 | **SIZES:** 4 - 30



VULCAN SLIM-FIT SHIRT
185 gm² 100% polyester. Deep waist band trouser. Front fastening zip. Cross over waistband with 2-button fastening. Straight leg.
Available in: White.



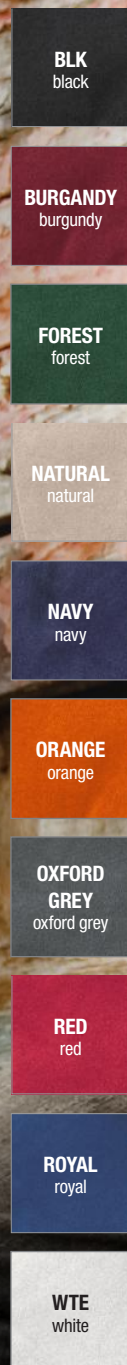
7889 | **SIZES:** 14"-18"



UNISEX INSULATED BODYWARMER
386 gsm Outer: 210T Polyester with A/C coating. 55gsm. Inner: 100% Polyester, with polyfill wadding bodywarmer has a great warmth to weight ratio and is perfect as a boost to your layering system.
Available in: Black, Bottle, Navy, Red.

R208X | **SIZES:** XS 34" S 38" M 41" L 44" XL 47" 2XL 50" 3XL 53"



**POLAR THERM™ FLEECE JACKET**

330 gm² 100% Polyester heavy pill-resistant Active Fleece. Stretchy fit, classic fit timeless fleece. Wash at 40°.

Available in Black*, Burgundy, Forest, Natural, Navy*, Orange, Oxford Grey, Red, Royal, White.

RE36A | **SIZES:** XS/UK38 - 2XL/UK52 (*3XL/UK54 available in these colours)

Result



SOFTSHELL JACKET

**SOFTSHELL JACKET**

280 gm² 100% Polyester outer-layer, 100% polyester micro-fleece inner-layer technically advanced two-layer showerproof, breathable and windproof jacket. Full zip front, two zip front pockets, chin guard, elasticised cuffs, slim fit.

Available in: Black/Black, Black/Orange, Charcoal/Black, Navy/Royal, Navy/Navy, Purple/Black, Red/Black, Vivid Green/Black, White/Black, Yellow/Black.

R231M | **SIZES:** S/UK38 - 4XL/UK52



SOFTSHELL WOMEN'S JACKET

SOFTSHELL WOMEN'S JACKET

R231F | **SIZES:** XS/UK8-2XL/UK18

Result



FLEECE GILET

**ARTISAN FLEECE GILET**

260 gm² 100% Polyester. Sleeveless gilet with contrast trim detail. High-neck round collar, leading into a two-way zipper. Two zipped external pockets and two internal open pockets. Front and back panel detail. Contrast fabric hook on back of collar for hanging up.

Available in: Black/Black, Burgandy/Brown, Moss green/Brown, Navy/Brown

PR803 | **SIZES:** XS-3XL



WOMEN'S FLEECE GILET

**WOMEN'S ARTISAN FLEECE GILET**

PR804 | **SIZES:** XS-3XL



PRO POLO SHIRT



PRO UNISEX POLO SHIRT

220 gm² / 6.5 oz, 50/50 poly/cotton, high quality and enhanced durability as well as a comfortable fit

Available in: Colour swatches above, more options available online.

RX101 | SIZES: XS-8XL (*8XL in these colours only)



PRO POLO WOMEN'S SHIRT



PRO POLO WOMEN'S SHIRT

220 gm² / 6.5 oz, 50/50 poly/cotton, high quality and enhanced durability as well as a comfortable fit

Available in: Colour swatches above, more options available online.

RX01F | SIZES: XS-4XL



BLEND POLO



BLEND POLO

200 gm² / 5.9 oz, 65/35 poly/cotton, classic fit, ribbed knit collar and cuffs, twin needle hem stitching, self coloured buttons, technical wicking fabric to help regulate temperature.

Available in: Colour swatches above, more options available online.

AQ015 | SIZES: XXS-5XL

(*4XL-5XL only available in these colours)



BLEND WOMEN'S POLO



BLEND WOMEN'S POLO

200 gm² / 5.9 oz, 65/35 poly/cotton, classic fit, ribbed knit collar and cuffs, twin needle hem stitching, two self coloured buttons, technical wicking fabric to help regulate temperature.

Available in: Colour swatches above, more options available online.

AQ025 | SIZES: XS-2XL



ORGANIC POLO



ORGANIC COTTON POLO

230 gm² / 6.78 oz, 100% organic cotton, front placket construction with two buttons, side slits at hem, flat knit rib collar and sleeve cuff.

Available in: Colour swatches above, more options available online.

SX126 | SIZES: XXS-5XL

(*4XL and 5XL only available in these colours)



ORGANIC WOMEN'S POLO



COTTON WOMEN'S POLO

200 gm² / 6.7 oz, 95% organic ringspun combed cotton, 5% elastane.

Available in: Colour swatches above, more options available online.

SX131 | SIZES: XS-2XL

(**NA in women's polo)



COTTON T-SHIRT



COTTON T-SHIRT

100% cotton. (Ash: 99/1 cotton/poly. Heather Grey: 97/3 Cotton/poly).

Available in: Colour swatches above, more options available online.



SS044 | SIZES: S-5XL (*4 & 5XL only available in these colours)

190gm² / 5.6oz



COTTON WOMEN'S T-SHIRT



COTTON WOMEN'S T-SHIRT

190 gm² / 5.6 oz, 100% cotton (*99/1 cotton/Poly **97/3 cotton/poly), technical wicking fabric

Available in: Colour swatches above, more options available online.

SS424 | SIZES: XS-2XL





COTTON PRE-SHRUNK T-SHIRT



UNISEX PRE-SHRUNK COTTON T-SHIRT

145 gm² / 4.3 oz, 100% pre-shrunk ringspun cotton

Available in: Colour swatches above, more options available online.

BA210 | **SIZES:** XS-5XL (*4XL & 5XL only available in these colours)



COTTON PRE-SHRUNK WOMEN'S T-SHIRT

COTTON PRE-SHRUNK WOMEN'S T-SHIRT

145 gm² / 4.3 oz, 100% pre-shrunk ringspun cotton

Available in: Colour swatches above, more options available online.

B210F | **SIZES:** XS-3XL (**3XL only available in these colours)



ORGANIC COTTON T-SHIRT



ORGANIC COTTON ESSENTIAL T-SHIRT

150 gm² / 4.4oz, 100% organic ring spun cotton, tubular construction, contemporary fit.

Available in: Colour swatches above, more options available online.

SX087 | **SIZES:** XS-3XL (* up to 4XL, ** up to 5XL)



ORGANIC WOMEN'S T-SHIRT

ORGANIC COTTON WOMEN'S ESSENTIAL T-SHIRT

150 gm² / 4.4oz, 100% organic ring spun cotton, tubular construction, straight fit.

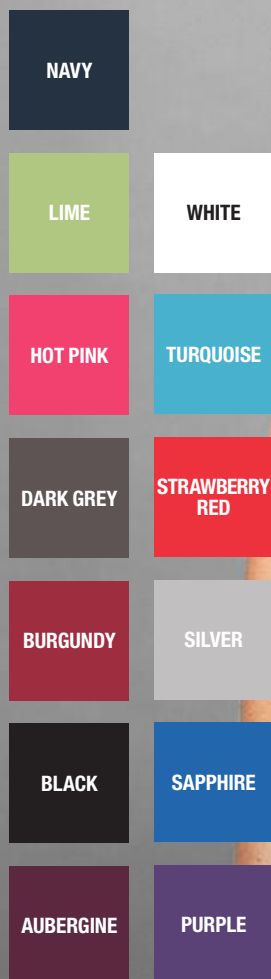
Available in: Colour swatches above, more options available online.

SX088 | **SIZES:** XS-2XL (up to 3XL in Black, White)



Housekeeping
& Spa

Comfort and style seamlessly fuse together in our contemporary Housekeeping & Spa capsule collection. With simple fluid silhouettes, you can move with ease from task-to-task whilst maintaining that ultimate professional first impression



ORCHID BEAUTY AND SPA TUNIC

100% Polyester plain weave, 185 gsm. Beauty and spa tunic with mandarin collar. Asymmetric button fastening to the front with eight bar shaped buttons. Short sleeve. Side vents. Back pleat for ease of movement. Princess seams. Easycare. Domestic wash at 40c.

Available in: Colours swatches as listed above.

PR682 | SIZE: XXS-5XL



RENATA

BLK
2781-7847

RENATA TUNIC

100% polyester women's tunic, short sleeves, standing collar, three top showing and hidden central button fastening, two side pockets, armhole comfort pleats in anti-perspirant COOLMAX™ fabric.

Available in: Black.

2781-7847 | SIZES: LENGTH: 31cm

BRAGARD®

BELINE

GREY
132672

BELINE TUNIC

65/35 polyester/cotton women's tunic, white trim on collar and short sleeves, snap central placket, slit on cuffs, Princess seams at back and front, side slits and two pockets.

Available in: Grey.

132672 | SIZES: XS-XL LENGTH: 74cm

BRAGARD®

TRIDOL

BLK
9077-7847

TRIDOL TUNIC

100% polyester unisex tunic, short sleeves, standing collar, three top showing and hidden central button fastening, two side pockets, armhole comfort pleats in anti-perspirant COOLMAX™ fabric.

Available in: Black.

9077-7847 | SIZES: XS-2XL LENGTH: 75cm

BRAGARD®



BLOSSOM TUNIC

100% Polyester, 185 gsm. Button front fastening with concealed zip. Mandarin collar. Short sleeve. Princess seams. Side vents. Back pleat for ease of movement. Domestic wash at 40c.

Available in: colour swatches above, more options available online.

PR683 | SIZES: XXS-5XL



MIKA TUNIC

100% Polyester, 185 gsm. Mandarin collar with side yoke detail along with four feature buttons and satin trim. Princess seams and bust darts. Side vents. Short sleeves. Domestic wash at 40c.

Available in: Black.

PR681 | SIZES: XXS-5XL



VIOLA TUNIC

100% Polyester, 160 gsm. Soft linen fabric with front and back princess seams and side vents. Two contrast coloured yarns with a concealed zip back and open side pockets. Rounded v-neck design.

Available in: Heather Black, Heather Blue, Heather Grey.

PR688 | SIZES: XS-5XL



IRIS STRAIGHT LEG TROUSERS

100% Polyester, 185 gsm. Deep waist band trouser. Front fastening zip. Cross over waistband with 2-button fastening. Straight leg.

Available in: Black, Heather Black, Heather Blue, Heather Grey.

PR536 | SIZES: XS-5XL LENGTH: Regular 31", Long 34"



NELDA APRON

65/35 polyester/cotton housekeeping apron, self-fabric tie, central panel with one pocket either side.

Available in: White.

6645-1625 | SIZES: LENGTH: 31cm

BRAGARD



PETAL TROUSER

98% Cotton 2% Elastane, women's trouser with 5 pockets and front zip.

Available in: Black, Beige, Steel Grey and Blue Denim.

131266 | SIZES: 8-24 Length 106cm

BRAGARD



AMBRA DRESS

65/35 poly/cotton dress, stand-up contrast collar, short Raglan sleeve with contrast turn-up, central hidden packet fastening, centre pleat, angled inset side pockets.

Available in: Grey/White stripe.

0915-2325 | SIZE: 6/8UK - 22/24UK LENGTH: 110cm

BRAGARD



Apron Collection

Built to be tough enough for the back-of-house and stylish enough for hospitality, our aprons are the perfect blend of form and function. You'll find artisan finishes, innovative closures, cross-back straps and a myriad of storage options



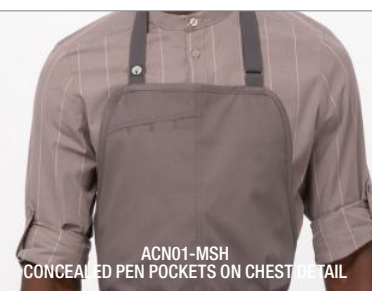
BLK
black

BLU
blue

CHR
charcoal

MSH
mushroom

WHT
white



BRIO CHEF'S BIB APRON

160 gm² / 4.7oz, 65/35 poly/cotton, adjustable elastic neck strap, curved hem, concealed pen pockets on chest, hip pocket, utility D-ring, front slit and reinforced stress points.

Available in: Black, Blue, Charcoal, Mushroom, White.

ACN01 | **SIZE:** 102cm W x 109cm L



contemporary
collection





Strap Colours
SKU
See page 138

BLK
black

BLU
blue

CHR
charcoal

DNA
dark navy

MSH
mushroom

BLK
black

CHR
charcoal

BLU
blue

CML
camel

MUS
mustard

ORA
orange

RED
red

SEA
sea foam

TPK
tropical pink

TUR
turquoise


WHT
white

LARGO BIB APRON

210 gm² / 6.2 oz, 65/35 poly/cotton, adjustable/Removeable Neck Strap XNS05 (sold separately, see page 138) can convert to cross-back, curved hem, concealed pen pockets on chest, slit seam and belt loops for ties, two roomy hip pockets, one with pencil divide, back pocket, utility D-ring, front slit. Your choice of strap colour.

Available in: Black, Blue, Charcoal, Mushroom, Dark Navy.

ABN01 | SIZES: 78cm L x 96cm W

 Chef Works

contemporary
collection



LARGO SHORT BIB APRON

210 gm² / 6.2oz, 65/35 poly/cotton, adjustable/removeable neck strap XNS05 (sold separately, see page 138) to convert to cross-back, curved hem, concealed pen pockets on chest, slit seam and belt loops for ties, two hip pockets.

Available in: Black, Blue, Charcoal, Dark Navy, Mushroom.

ABN01W | SIZE: 64cm L x 96cm W

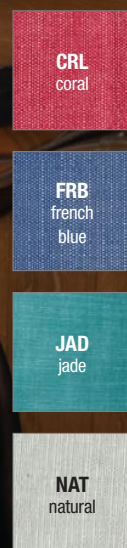
LARGO HALF BISTRO APRON

210 gm² / 6.2oz, 65/35 poly/cotton, waistband tie opening and belt loop, two front hip patch and back utility pockets, metal D-ring, front slit.

AHN05 | SIZE: 49cm L x 81cm W

 Chef Works

contemporary
collection

**MEDFORD URBAN BIB APRON**

210 gm² / 6.2 oz, 65/35 poly/cotton, crosshatch fabric, adjustable neck strap, concealed pen pockets on chest, spacious hip pockets, right hip pocket with pencil divide, back pocket, slit-seam opening, belt loop for ties

Available in: Coral, French Blue, Jade, Natural.

ABN02 | SIZE: 78cm L x 97cm W

ChefWorks
URBAN
COLLECTION

MEDFORD SHORT BIB**MEDFORD URBAN SHORT BIB APRON**

210 gm² / 6.2 oz, 65/35 poly/cotton, crosshatch fabric, front slit, adjustable neck strap, concealed pen pockets on chest, left and right hip pockets, back pocket, slit-seam opening, belt loop for ties, double-needle stitching

Available in: Coral, French Blue, Jade, Natural.

ABN02W | SIZE: 64cm L x 98cm W

ChefWorks
URBAN
COLLECTION

MEDFORD HALF BISTRO**MEDFORD URBAN HALF BISTRO APRON**

210 gm² / 6.2 oz, 65/35 poly/cotton, crosshatch fabric, crosshatch fabric, spacious left hip pocket, spacious right hip pocket with pencil divide, back pocket, slit-seam opening, belt loop for ties, double-needle stitching, reinforced stress points

Available in: Coral, French Blue, Jade, Natural.

AHN06 | SIZE: 41cm L x 96cm W

ChefWorks
URBAN
COLLECTION



Strap Colours
SKU
See page 138

- BLK black
- CHR charcoal
- BLU blue
- CML camel
- MUS mustard
- ORA orange
- RED red
- SEA sea foam
- TPK tropical pink
- TUR turquoise
- WHT white

OLYMPIA URBAN REVERSIBLE SELF-PLAID/PLAID BIB APRON

227 gm² / 6.7oz 100% cotton adjustable/Removeable Neck Strap XNS05 (sold separately, see page 138) can convert to cross-back, w/snaps (one engraved w/logo) included, double-needle stitching, plain self-fabric ties, reinforced stress points, two spacious hip pockets on front and reverse.

Available in: Brown (camel strap), Grey (black strap), Navy (blue strap).

ABR01 | SIZE: 93cm W x 82cm L.



OLYMPIA HALF BISTRO



OLYMPIA URBAN REVERSIBLE SELF-PLAID/PLAID HALF BISTRO APRON

227 gm² / 6.7oz 100% cotton apron with double-needle stitching, plain self-fabric ties, reinforced stress points, two spacious hip pockets on front and reverse.

Available in: Brown, Grey, Navy.

AHR01 | SIZE: 81cm W x 49cm L.





Strap Colours
SKU
See page 138

BLK
black

CHR
charcoal

BLU
blue

CML
camel

MUS
mustard

ORA
orange

RED
red

SEA
sea foam

TPK
tropical pink

TUR
turquoise

WHT
white

BLK
black

BLU
blue

TAU
taupe

SEATTLE URBAN BIB APRON

230 gm² / 6.8 oz, 65/35 poly/cotton, herringbone weave, reversible/adjustable/removable neck strap XNS05 (sold separately, see page 138), cross-back with conversion (neck strap sold separately), four utility pockets, double-needle stitching on pockets

Available in: Black, Blue, Taupe.

ABS02 | SIZE: 78cm L x 96cm W

Chef Works
URBAN
COLLECTION

SEATTLE HALF BISTRO



SEATTLE URBAN HALF BISTRO APRON

230 gm² / 6.8 oz, 65/35 poly/cotton, herringbone weave, four utility pockets, curved hem, double-needle topstitching pockets, reinforced stress points

Available in: Black, Blue, Taupe.

AHN07 | SIZE: 41cm L x 96cm W

Chef Works
URBAN
COLLECTION

UPTOWN CROSS-BACK BIB

BTP
blue taupe

RNA
red/navy

UPTOWN CROSS-BACK BIB

315 gm² / 9.3 oz, 75/25 cotton/poly textured crosshatch denim with artisan finish, adjustable cross-back ties with snap tab, three-part front pocket, pencil pocket, notebook pocket.

Available in: Red/Navy, Blue Taupe.

ABX01 | SIZE: 86cm L x 76cm W



Chef Karla Navarro, The Kitchen Project, Tijuana, Mexico



Apron Collection

UPTOWN HALF BISTRO

BTP
blue taupe

RNA
red/navy



UPTOWN HALF BISTRO

315 gm² / 9.3 oz, 75/25 cotton/poly textured crosshatch denim with artisan finish, three-part front pocket, cell phone pocket.

Available in: Red/Navy, Blue Taupe.

AHN01 | SIZE: 46cm L x 79cm W





EAB
earth brown

PEW
pewter

DORSET CHEF'S BIB APRON

266 gm² / 7.8 oz, 100% cotton antique washed finish, adjustable neck with grommet, chest pocket with riveted ends and cell phone pocket.

Available in: Earth Brown, Pewter.

ABCAQ004 | SIZE: 102cm L x 99cm W

Chef Michael McKee, The Cork and Craft, San Diego, USA



Chef Works

URBAN
COLLECTION



Apron Collection

DORSET BIB



DORSET BIB APRON

266 gm² / 7.8 oz, 100% cotton antique washed finish, adjustable neck with grommet, chest pocket and cell phone/notebook pocket with riveted ends.

Available in: Earth Brown, Eggplant, Golden Brown, Pewter, Rust.

ABAQ054 | SIZE: 86cm L x 76cm W



Chef Works

URBAN
COLLECTION

DORSET HALF BISTRO



DORSET HALF BISTRO APRON

266 gm² / 7.8 oz, 100% cotton antique washed finish, grommets for ties and cell phone/notebook hip pocket with riveted ends.

Available in: Earth Brown, Eggplant, Golden Brown, Pewter, Rust.

AHWAQ014-GBN | SIZE: 48cm L x 79cm W



Chef Works

URBAN
COLLECTION



BNB
brown/black

PUB
purple/
black

BOULDER CHEF'S BIB APRON

365 gm² / 10.8 oz, 100% cotton denim with a waxed finish look, towel loop, reverse fabric ties, reinforced stress points, adjustable neck with overall clips and tweezer chest pocket.
Available in: Brown/Black, Purple/Black.

ABCWT001 | **SIZE:** 102cm L x 99cm W



BOULDER BIB



BOULDER BIB APRON

365 gm² / 10.8 oz, 100% cotton denim with a waxed finish look, towel loop, reverse fabric ties, reinforced stress points, adjustable neck with overall clips and double front pockets.
Available in: Brown/Black, Purple/Black.

ABWT051 | **SIZE:** 86cm L x 76cm W



BOULDER HALF BISTRO



BOULDER HALF BISTRO APRON

365 gm² / 10.8 oz, 100% cotton denim with a waxed finish look, tapered design, reverse fabric ties with grommets and double front pockets.
Available in: Brown/Black, Purple/Black.

AHWWT001 | **SIZE:** 46cm L x 79cm W



NTM
nutmeg

SGY
steel grey

ROCKFORD CHEF'S BIB APRON

315 gm² / 9.3 oz, 100% cotton enzyme washed canvas, adjustable metal neck buckle, chest with tweezer section and two hip pockets with saddle stitching detail.
Available in: Nutmeg, Steel Grey.

ABCKV003 | SIZE: 102cm L x 99cm W



Chef Barret Beyer, Star Studded Events & Catering, New York, USA. GRAMERCY CHEF COAT | EXDZ001-BLK



ROCKFORD BIB



ROCKFORD BIB APRON

315 gm² / 9.3 oz, 100% cotton enzyme washed canvas, adjustable metal neck buckle, chest with tweezer section and two hip pockets with saddle stitching detail.
Available in: Nutmeg, Steel Grey.

ABKV053 | SIZE: 86cm L x 76cm W



ROCKFORD HALF BISTRO



ROCKFORD HALF BISTRO APRON

315 gm² / 9.3 oz, 100% cotton enzyme washed canvas, towel loop and two hip pockets with saddle stitching detail.
Available in: Nutmeg, Steel grey.

AHWKV013 | SIZE: 48cm L x 79cm W



NAT
natural

AUSTIN CHEF'S BIB APRON

340 gm² / 9.5 oz, 100% cotton denim, reverse fabric ties, adjustable neck with snaps/carabiner, tweezer chest pocket, and towel loop.

Available in: Natural.

ABCCD006 | SIZE: 102cm L x 99cm W



Chef Phillip Esteban, CH Projects, San Diego, USA

AUSTIN BIB APRON

NAT
natural

AUSTIN BIB APRON

340 gm² / 9.5 oz, 100% cotton denim, reverse fabric ties, adjustable neck with snaps/carabiner, tweezer chest pockets, cell phone pocket.

Available in: Natural.

ABCD056 | SIZE: 86cm L x 76cm W



AUSTIN HALF BISTRO APRON

NAT
natural

AUSTIN HALF BISTRO APRON

340 gm² / 9.5 oz, 100% cotton denim, reverse fabric ties, cell phone hip pocket, double front pockets.

Available in: Natural.

ALWCD026 | SIZE: 48cm L x 71cm W



AUSTIN WAIST APRON

NAT
natural

AUSTIN WAIST APRON

340 gm² / 9.5 oz, 100% cotton denim, reverse fabric ties, triple front pockets.

Available in: Natural.

AWCD016 | SIZE: 30cm L x 58cm W





BSL
black/
steel grey

BBG
black/
burgundy

CORVALLIS BIB APRON

280 gm² / 8oz, 60/40 cotton/poly crosshatch fabric, adjustable neck with grommet and two hip pockets with saddle stitching.
Available in: Black/Steel Grey, Black/Burgundy.

ABXX052 | SIZE: 86cm L x 76cm W



CORVALLIS BISTRO



BSL
black/
steel grey

CORVALLIS BISTRO APRON

280 gm² / 8oz, 60/40 cotton/poly crosshatch fabric, ties with grommets and two hip pockets with saddle stitching.
Available in: Black/Steel Grey.

ALWXX022 | SIZE: 79cm L x 79cm W



CORVALLIS HALF BISTRO



BSL
black/
steel grey

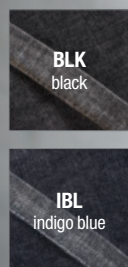
BBG
black/
burgundy

CORVALLIS HALF BISTRO APRON

280 gm² / 8oz, 60/40 cotton/poly crosshatch fabric, ties with grommets and two hip pockets with saddle stitching.
Available in: Black/Steel Grey, Black/Burgundy.

AHWXX012 | SIZE: 48cm L x 79cm W





MANHATTAN BIB APRON

220 gm² / 6.5 oz, 100% cotton denim, reverse fabric ties and pockets, adjustable metal neck buckle, riveted and ends, zipper chest, double front pockets.

Available in: Black, Indigo Blue.

AB034 | **SIZE:** 86cm L x 76cm W



(T-shirts, models own)



MANHATTAN HALF BISTRO



MANHATTAN HALF BISTRO APRON

220 gm² / 6.5 oz, 100% cotton denim, reverse fabric ties and pockets, riveted and ends, zipper hip and double front pockets

Available in: Black, Indigo Blue.

AW046 | **SIZE:** 48cm L x 72cm W



MANHATTAN WAIST APRON

220 gm² / 6.5 oz, 100% cotton denim, self fabric ties, riveted and ends, zipper hip and divided front pockets

Available in: Black, Indigo Blue.

AW047 | **SIZE:** 30cm L x 58cm W



MANHATTAN WAIST

BLK
blackIBL
indigo blue

MEMPHIS CHEF'S BIB APRON

280 gm² / 8.3 oz, 100% cotton denim, contrast topstitching, contrast tape ties, adjustable by pulling ties, criss-cross bar tacks, utility chest pocket, double front and cell phone hip pocket.

Available in: Black, Indigo Blue.

AB036 | SIZE: 100cm L x 89cm W



MEMPHIS BISTRO

BLK
blackIBL
indigo blue

MEMPHIS BISTRO APRON

280 gm² / 8.3 oz, 100% cotton denim, contrast topstitching, contrast tape ties, criss-cross bar tacks and double front pockets

Available in: Black, Indigo Blue.

AW049 | SIZE: 61cm L x 81cm W



MEMPHIS HALF BISTRO

BLK
blackIBL
indigo blue

MEMPHIS HALF BISTRO APRON

280 gm² / 8.3 oz, 100% cotton denim, contrast topstitching, contrast tape ties, criss-cross bar tacks and double front pockets with cell phone divide

Available in: Black, Indigo Blue.

AW048 | SIZE: 48cm L x 72cm W



MEMPHIS WAIST

BLK
blackIBL
indigo blue

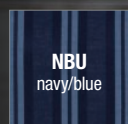
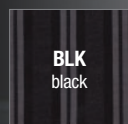
MEMPHIS WAIST APRON

280 gm² / 8.3 oz, 100% cotton denim, contrast topstitching, contrast tape ties, criss-cross bar tacks and triple front pockets

Available in: Black, Indigo Blue.

AW054 | SIZE: 30cm L x 58cm W



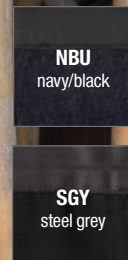


PRESIDIO BIB & HALF BISTRO APRON

240 gm² / 7.1 oz, 66/34 cotton/poly, contrast ties, adjustable neck buckle on bib, riveted pocket ends, double front pockets.

Available in: Black, Indigo Blue.

AB024 | SIZE: 86cm L x 76cm W AW026 | SIZE: 48cmL x 80cmW



INDY HIPSTER APRON

315 gm² / 9.3 oz, 100% cotton with artisan finish, adjustable belt, metal clasp, D-ring & buckle closure, iPad/notebook pocket, cell phone pocket, thermometer/pen pocket, riveted pocket ends.

Available in: Navy-Black, Steel-Grey.

AWKV056 | SIZE: 29cm L x 39cm W





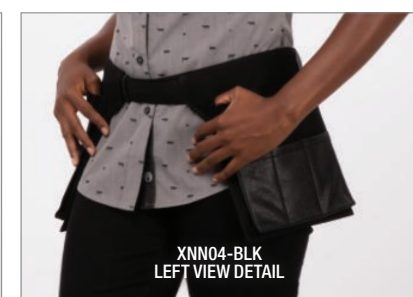
SYRACUSE URBAN WAISTBELT

475 gm² / 14 oz, Body: 100% polyester, Coating: PU, two front pockets, one utility pocket, utility loop, clasp and grommet detail, wear cross-body or around waist, adjustable strap/buckle.

Available in: Black, Camel, Grey, Merlot, Mustard.

XNN03 | SIZE: Body: 27cm L x 20cm W, Belt: 119cm L

ChefWorks
URBAN
COLLECTION



CHEYENNE URBAN WAISTBELT

325 gm² / 9.6 oz, 97/3 cotton/rayon, eight total pockets, two oversized front pockets, six utility pockets, adjustable waist belt with plastic buckle

Available in: Black.

XNN04 | SIZE: Bodies: 27cm L x 20cm W, Belt: 162cm L

ChefWorks
URBAN
COLLECTION

- BLK**
black
- BLU**
blue
- CML**
camel
- MUS**
mustard
- ORA**
orange
- RED**
red
- SEA**
sea foam
- TPK**
tropical pink
- TUR**
turquoise
- WHT**
white

BIB APRON NECK STRAP

100/100 poly/polyurethane neck strap with adjustable metal slider, snap closures, one snap branded with Chef Works® logo. Compatible with Largo, Olympia and Seattle bib aprons.

Available in: Black, Blue, Camel, Mustard, Orange, Red, Sea Foam, Tropical Pink, Turquoise, White.

XNS05 | SIZE: Min Length 55.9cm – Max Length 87.5cm.

Chef Works
URBAN
COLLECTION



Apron Collection

ENGLISH CHEF BIB



NAV
navy
(New)

NCS
navy chalk
stripe

BCS
black chalk
strip

GWS
charcoal chalk
stripe

BLK
black

WHT
white

ENGLISH CHEF BIB APRON

250 gm² / 6.2 oz, 65/35 yarn-dyed poly/cotton, adjustable by pulling ties.

Available in: Black Chalk Stripe, Charcoal Chalk Stripe, Navy Chalk Stripe, Navy (New).

A100 | SIZE: 99cm L x 94cm W

RE:CHEF BIB

210 gm² / 7.4 oz. 65/35 recycled poly/cotton adjustable by pulling ties

Available in: Black, White.

REA100 | SIZE: 100cm L x 94cm W

New



CROSS-BACK BIB



BLK
black

CROSS-BACK BIB APRON

210 gm² / 6.2 oz, 65/35 poly/cotton, adjustable extra wide cross-back ties, two patch pockets

Available in: Black.

F35-BLK | SIZE: 90cm L x 79cm W

THREE POCKET BIB



BLK
black

THREE POCKET BIB APRON

210 gm² / 6.2 oz, 65/35 poly/cotton, adjustable neck buckle, three pockets.

Available in: Black.

F10 | SIZE: 61cm L x 70cm W



CHALK STRIPE BIB



CHALK STRIPE BIB APRON

192 gm² 80/20 yarn-dyed poly/cotton, patch pocket with center divide.

Available in: Black Chalk Stripe.

CSBA | SIZE: 87cm L x 69cm W

BUTCHER (CONTRAST TIES)



BUTCHER (CONTRAST TIES) APRON

200 gm² / 6.2 oz, 65/35 yarn-dyed poly/cotton, contrast black ties, adjustable neck buckle, patch pocket with center divide.

Available in: Fine Stripe.

AB012 | SIZE: 86cm L x 61cm W

BISTRO APRON



BISTRO APRON

210 gm² / 6.2 oz, 65/35 poly/cotton, patch pocket with pencil divide. Available in: Black, Slate. F24 | SIZE: 81cm L x 70cm W

Sustainable version 6.2 oz. 65/35 recycled poly/cotton Available in: Black, White. REF24 | SIZE: 81cm L x 40cm W



CHEF'S FULL LENGTH APRON



CHEF'S FULL LENGTH APRON

210 gm² / 6.2 oz, 65/35 poly/cotton, extra long, extra wide, no pocket

Available in: White.

CFLA | SIZE: 102cm L x 97cm W

TAPERED (W/POCKET) APRON



TAPERED (W/POCKET) APRON

210 gm² / 6.2 oz, 65/35 poly/cotton, "flip-over" front flap, looped towel holder, angled pocket

Available in: Black.

BPTA | SIZE: 81cm L x 53cm W

PINSTRIBE BIB



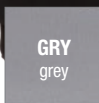
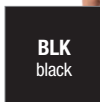
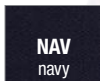
PINSTRIBE BIB APRON

210 gm² / 6.2 oz, 65/35 yarn-dyed poly/cotton, adjustable neck buckle, patch pocket with center divide.

Available in: White Pinstripe.

CSAA | SIZE: 87cm L x 69cm W

BUTCHER APRON



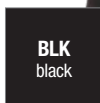
BUTCHER APRON

210 gm² / 6.2 oz, 65/35 poly/cotton, adjustable neck buckle, patch pocket with center divide.

Available in: Black, White, Grey, Navy.

F8 | SIZE: 86cm L x 61cm W

BIB APRON



BIB APRON

210 gm² / 6.2 oz, 65/35 poly/cotton, no pocket. Available in: Black (APKBL), White (APKDC).

APKBL/APKDC | SIZE: 84cm L x 70cm W

Sustainable version 65/35 recycled poly/cotton Available in: Black, White.

REAPK | SIZE: 84cm L x 70cm W



HALF BISTRO APRON



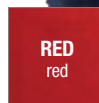
HALF BISTRO APRON

210 gm² / 6.2 oz, 65/35 poly/cotton, patch pocket with center divide

Available in: Black, White.

F28 | SIZE: 48cm L x 70cm W

WAIST APRON



WAIST APRON

210 gm² / 6.2 oz, 65/35 poly/cotton, three pockets

Available in: Black, Red.

F9 | SIZE: 31cm L x 58cm W



Suiting Collection

To outfit numerous properties, our suiting collection hosts a casual, contemporary and classic offering. With a range of fabrics, fits and colours, this beautifully tailored collection allows individuality, sophistication and performance to the many different roles in hospitality



Suiting Collection




BBK
black pinstripe

APEX CONTEMPORARY MEN'S BANQUET COAT

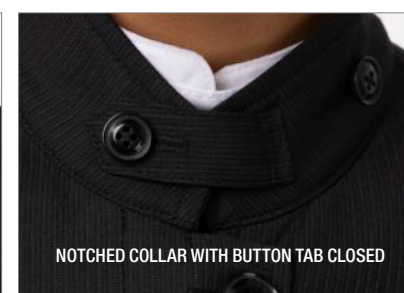
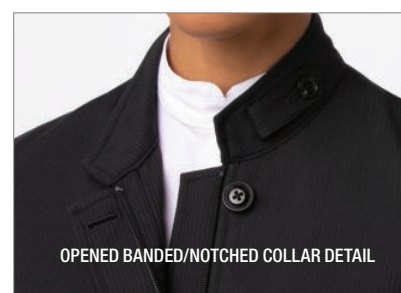
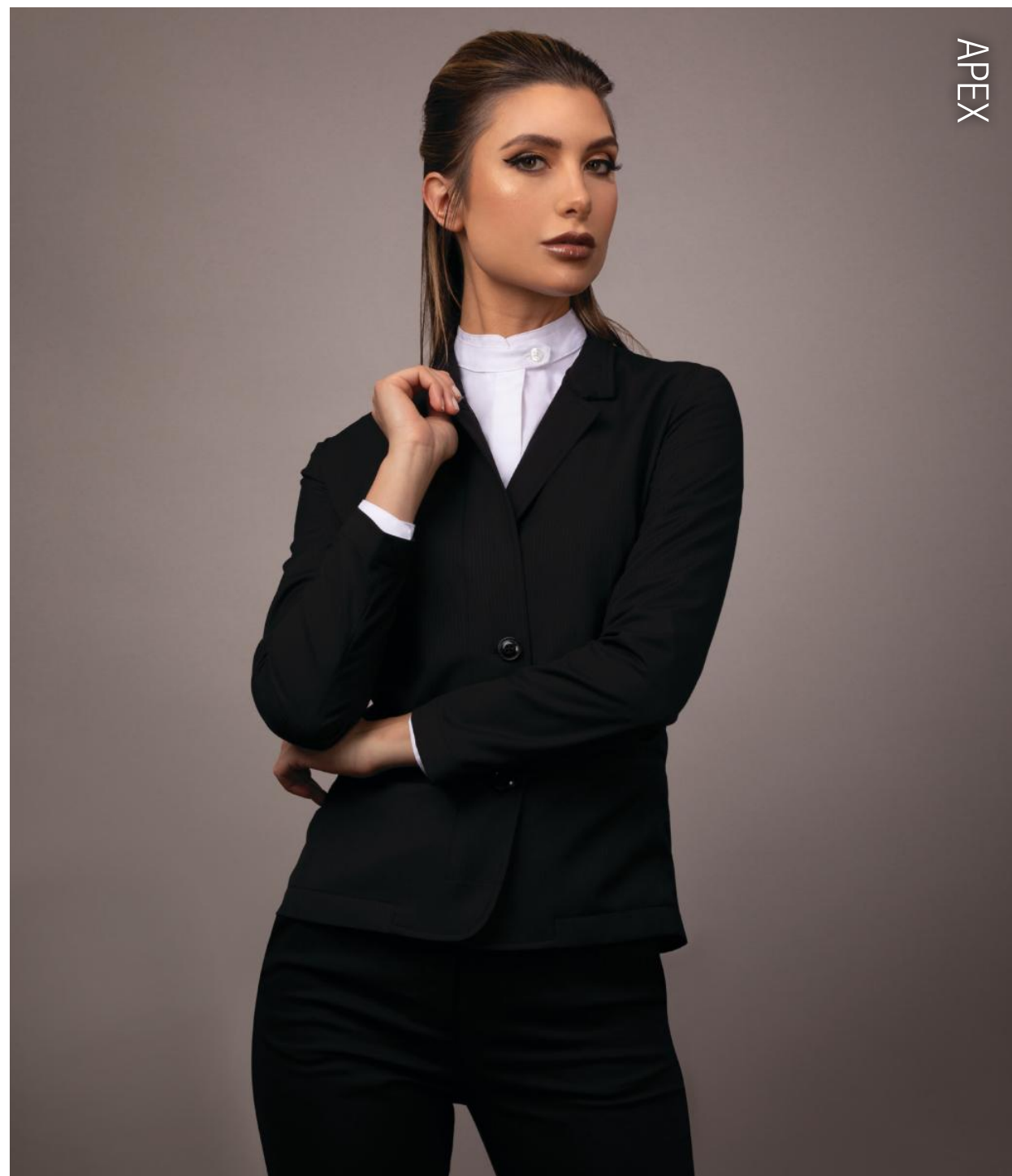
210 gm² / 6.2 oz, 70/30 poly/rayon, zip/button front, concealed placket, closes left-to-right, long sleeve, front coat lining, banded/notched collar with button tab, inset hip pockets, inner left chest pocket, two back vent openings. Women's fit available CQZ01W, see page 32-33).

Available in: Black pinstrip.

CQZ01 | SIZES: S-4XL **MF 1**

 ChefWorks

contemporary
collection



BLK
black

CONTEMPORARY WOMEN'S BANQUET COAT

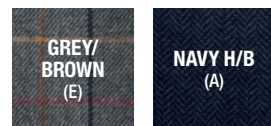
210 gm² / 6.2 oz, 70/30 poly/rayon, zip/button front, concealed placket, closes right to left, front coat lining, long sleeves, banded/notched collar with button tab, inset hip pockets, inner left chest pocket and two back vent openings. Men's style available, CQZ01 (see page 10).

Available in: Black.

CQZ01W | SIZES: S-3XL **MF 1**

 ChefWorks

contemporary
collection



Elegantly designed to encourage individuality and create a unique business casual look.



QUEBEC TWEED JACKET

40/40/20 poly/wool/mixed fibres, slim fit, two button front, centre vent, two flap pockets, welt chest pocket, two internal pockets, notch lapel Teflon finished jacket.

Available in: Grey/Brown (E), Navy (A).

3836 | **SIZES:** Short & Long 38-44, Reg 36-50



MONTREAL WOMEN'S TWEED JACKET

40/40/20 wool/poly/mixed fibres, slim fit, one button front, centre vent, two jet pockets, welt chest pocket, Teflon finished jacket.

Available in: Grey/Brown (E), Navy (A).

2344 | **SIZES:** Petite 8-14, Reg 6-24, Long 8-14



MEMPHIS TWEED WAISTCOAT

40/40/20 wool/polyester/mixed fibres, notch lapel, five button front, two welt pockets, cloth back with vent detail and adjuster, Teflon finish waistcoat

Available in: NavyH/B (A), Navy Check (B), Charcoal H/B (C), Charcoal Charc/Pink (D), Grey/Brown Check (E), Green/Blue (F).

1463 | **SIZES:** Reg S - 2XL



NASVILLE WOMEN'S TWEED WAISTCOAT

40/40/20 wool/polyester/mixed fibres, notch lapel, five button front, two welt pockets, cloth back with vent detail and adjuster, Teflon finish waistcoat.

Available in: NavyH/B (A), Navy Check (B), Charcoal H/B (C), Charcoal Charc/Pink (D), Grey/Brown Check (E), Green/Blue (F).

2310 | **SIZES:** Reg XS - 2XL



CASSINO JACKET

- BLACK (D)
- CHARCOAL (C)
- LIGHT GREY (G)
- MID BLUE (H)

CASSINO SLIM FIT JACKET
350 gm² 54/44/2 poly/wool/lycra, single breasted slim fit jacket, shorter length, two button front, side vents, ticket pocket, slim lapels with saddle stitching, piano faced interior with slim pocket jets.
Available in: Black (D), Charcoal (C), Light Grey (G), Mid Blue (H).

5985 | SIZES: Reg 34" - 46", Short & Long 34" - 44"

Blending premium lightweight European fabrics with superior technical attributes



OLIVIA CHECK WAISTCOAT
64% Polyester, 34% Viscose, 2% Lycra. Tailored fit, 5 button front, 2 welt pockets, part lining back with adjuster.
Available in: Navy Check, Grey Check, Green Check.

2363 | SIZES:XS-2XL



EMILIO CHECK WAISTCOAT
64% Polyester, 34% Viscose, 2% Lycra. Tailored fit, 5 button front, 2 welt pockets, part lining back with adjuster.
Available in: Navy Check, Grey Check, Green Check.

1726 | SIZES: S - 2XL



STELLA CHECK TROUSER
64% Polyester, 34% Viscose, 2% Lycra. Slim leg, front hook fastening, 2 side pockets, mock hip pockets, feature jogger waist.
Available in: Navy Check, Grey Check.

2364 | SIZES: 6-26 LENGTH: Reg 29"



FABIAN CHECK TROUSER
64% Polyester, 34% Viscose, 2% Lycra. Slim fit, flat front, 2 side pockets, 1 rear pocket.
Available in: Navy Check, Grey Check.

8934 | SIZES: 28-42" LENGTH S-29.5", R-31.5", L-33" & 36" unfinished





AVALINO JACKET

AVALINO TAILORED FIT JACKET

270 gm² 54/44/2 poly/wool/lycra, single breasted jacket, tailored fit, two button front, side vents, three inside pockets, mobile phone pocket.

Available in: Black, Charcoal, Light Grey, Mid Blue.

5647 | **SIZES:** Short 36"-48", Reg 34"- 52", Long 38"- 48"



AVALINO TROUSERS

AVALINO TAILORED FIT TROUSER

270 gm² 54/44/2 poly/wool/lycra, flat front trouser, tailored fit, two side pockets, one rear pocket.

Available in: Black, Charcoal, Light Grey, Mid Blue.

8387 | **SIZES:** **WAIST:** 28" - 40" **LENGTH:** Short 29.5", Reg 31.5", Long 33", Unfinished 36"



TORINO TROUSER

TORINO SLIM LEG TROUSER

270 gm² 54/44/2 poly/wool/lycra slim leg trouser, two side pockets and two mock back pockets.

Available in: Black, Charcoal, Light Grey, Mid Blue.

2294 | **SIZES:** 4 - 24 **LENGTH:** Short 27", Reg 29", Long 31", XL 33", Unfinished 36"



GENOA TROUSER

GENOA TAILORED LEG TROUSER

270 gm² 54/44/2 poly/wool/lycra, slim leg profile trouser, front hook fastening, two side pockets, mock rear pockets, belt loops.

Available in: Black, Charcoal, Light Grey, Mid Blue.

2234 | **SIZES:** 4 - 24 **LENGTH:** Short 27", Reg 29", Long 31", XL 33", Unfinished 36"



CASSINO TROUSER

CASSINO SLIM FIT TROUSER

270 gm² 54/44/2 poly/wool/lycra, flat front slim fit trouser, two side pockets, one rear pocket.

Available in: Black, Charcoal, Light Grey, Mid Blue.

8655 | **SIZES:** **WAIST:** 28" - 40" **LENGTH:** Short 29.5", Reg 31.5", Long 33", Unfinished 36"



NOVARA JACKET

NOVARA TAILORED FIT JACKET

270 gm² 54/44/2 poly/wool/lycra, tailored fit, two button jacket, lapel and pocket contrast detail, centre vent, tailored back panels, one inside pocket.

Available in: Black, Charcoal, Light Grey, Mid Blue.

2222 | **SIZES:** Petite 6 - 16, Reg 6 - 24, Long 8 - 18



TERAMO DRESS

TERAMO DRESS

270 gm² 54/44/2 poly/wool/lycra, shift dress with princess seam, short sleeve, centre vent, full stretch lining.

Available in: Black, Charcoal, Light Grey, Mid Blue.

2289 | **SIZES:** Regular 6-24, Long 8-20.



NUMANA SKIRT

NUMANA SKIRT

270 gm² 54/44/2 poly/wool/lycra, straight skirt, centre vent, shaped back panels, full stretch lining.

Available in: Black, Charcoal, Light Grey, Mid Blue.

2224 | **SIZES:** Reg 4 - 24, Long 8 - 24





NAVY
(A)

MID GREY
(G)

CHARCOAL
(C)

BLACK
(D)

*Perfectly balances high quality tailoring
with cutting edge shape memory technology*

ROSEWOOD SLIM FIT JACKET

325 gm² 65/35 poly/wool, short, slim fit, one button jacket, peaked lapel, two flap and two jetted pockets, plain back, tailored back panels, one inside pocket

Available in: Black, Charcoal, Mid Grey, Navy.

2263 | **SIZES:** Petite 6 - 16, Reg 4 - 18, Long 8 - 16



CORINTHIA DRESS

CORINTHIA DRESS

325 gm² 65/35 poly/wool, beautifully tailored V-neck dress, short sleeve, breast darts, centre vent, full stretch lining.

Available in: Black, Charcoal, Mid Grey, Navy.

2246 | **SIZES:** Reg 6 - 24 Long 8-20.



HEMPEL TROUSER

HEMPEL SLIM FIT TROUSER

325 gm² 65/35 poly/wool, slim leg trouser, side pockets, mock hip pockets.

Available in: Black, Charcoal, Mid Grey, Navy.

2306 | **SIZES:** 4-24 **LENGTH:** Short 27", Reg 29", Long 31", XL 33", Unfinished 36".



WALDORF WAISTCOAT

WALDORF LADIES WAISTCOAT

325 gm² 65/35 poly/wool, single breasted waistcoat, 4 button front, lining backed with strap adjuster, two welt pockets

Available in: Black, Charcoal, Mid Grey, Navy.

2260 | **SIZES:** Long 6 - 24



WYNDHAM SKIRT

WYNDHAM SKIRT

325 gm² 65/35 poly/wool, straight skirt, centre vent, shaped back panels, full stretch lining.

Available in: Black, Charcoal, Mid Grey, Navy.

2229 | **SIZES:** Reg 6 - 24, Long 8 - 24, X-Long 8 - 24

A go to all-round performer offering unrivalled value

NAVY
(A)

MID GREY
(G)

CHARCOAL
(C)

BLACK
(D)

ALDWYCH TAILORED FIT TROUSER

325 gm² 65/35 poly/wool, flat front tailored fit trouser, two side pockets, one rear pocket.

Available in: Black, Charcoal, Mid Grey, Navy

8557 | SIZES: WAIST: 28" - 48" LENGTH: Short 29.5", Reg 31.5", Long 33", Unfinished 36".

BROOK
TAVERNER
SINCE 1912



ALDWYCH TAILORED FIT JACKET

325 gm² 65/35 poly/wool, single breasted tailored fit jacket, two button front, side vents, three inside pockets, mobile phone pocket.

Available in: Navy, Charcoal, Black, Mid Grey.

3125 | SIZES: Short 36" - 48", Reg 36" - 56", Long 38" - 48"



CAPITAL WAISTCOAT

325 gm² 65/35 poly/wool, single breasted waistcoat, 5 button front, lining backed with strap adjuster, two welt pockets.

Available in Navy, Charcoal, Black, Mid Grey.

1300 | SIZES: Reg 36" - 54"



PHOENIX JACKET

PHOENIX TAILORED FIT JACKET

330 gm² / 9.73 oz, 64/34/2 poly/viscose/lycra, two button, twin rear vents.
Available in: Black, Charcoal Pin Dot, Navy, Navy Pin Dot.

3552 | **SIZES:** Short 36" - 48", Reg 34" - 56", Long 38" - 48"



PHOENIX TROUSER

PHOENIX TAILORED FIT TROUSER

330 gm² / 9.73 oz, 64/34/2 poly/viscose/lycra, two button, twin rear vents.
Available in: Black, Charcoal Pin Dot, Navy, Navy Pin Dot.

8755 | **SIZES:** **WAIST:** 28" - 52" **LENGTH:** Short 29.5", Reg 31.5", Long 33", Unfinished 36".



PROTEUS WAISTCOAT

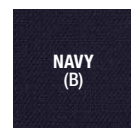
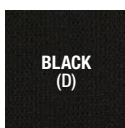
PROTEUS WAISTCOAT

330 gm² / 9.73 oz, 64/34/2 poly/viscose/lycra, notch lapels, 5 button front, cloth backed, two welt pockets.
Available in: Black, Charcoal Pin Dot, Navy, Navy Pin Dot.

1449 | **SIZES:** Reg 34" - 56"



*Design-led collection
delivers on-trend,
on-time and
on budget*



ARIEL JACKET

ARIEL SLIM FIT JACKET

330 gm² / 9.73 oz, 64/34/2 poly/viscose/lycra, one button jacket, centre vent.
Available in: Navy Pin Dot, Navy, Charcoal Pin Dot, Black.

2272 | **SIZES:** Petite 6 - 16, Reg 4 - 24, Long 6 - 16



LARISSA WAISTCOAT

LARISSA WAISTCOAT

330 gm² / 9.73 oz, 64/34/2 poly/viscose/lycra, notch lapels, 5 button front, cloth backed, two welt pockets.
Available in: Navy Pin Dot, Navy, Charcoal Pin Dot, Black.

2293 | **SIZES:** Reg 6-24



JULIET STRAIGHT SKIRT

JULIET STRAIGHT SKIRT

330 gm² / 9.73 oz, 64/34/2 poly/viscose/lycra, rear panel detail with centre vent, full stretch lining.
Available in: Navy Pin Dot, Navy, Charcoal Pin Dot, Black.

2275 | **SIZES:** Reg 4 - 24, Long 8 - 30



OPHELIA SLIM FIT TROUSER

OPHELIA SLIM FIT TROUSER

330 gm² / 9.73 oz, 64/34/2 poly/viscose/lycra, side pockets, mock hip pockets.
Available in: Navy Pin Dot, Navy, Charcoal Pin Dot, Black.

2276 | **SIZES:** 4-24 **LENGTH:** Short 27", Reg 29", Long 31", X-Long 33", Unfinished 36"



BROOK
TAVERNER
SINCE 1912

OEKO-TEX®
STANDARD 100
by ATZUNASAT KONFERENZ MIT
Textilwerkstoffen

NAVY
(A)

BLACK
(D)

LUNA WAISTCOAT

335 gm² 100% Polyester, 5 button front, two welt pockets, lining backed with adjuster.

Available in: Black, Navy.

2257 | SIZES: XS - XXL

PLUTO SKIRT

335 gm² 100% polyester straight skirt centre vent, fully lined.

Available in: Black, Navy.

2258 | SIZES: 4-26 LENGTH: Reg 22".

JUPITER TAILORED FIT JACKET

335 gm² 100% Polyester, Single breasted jacket, tailored fit, two button front, side vents.

Available in: Black, Navy.

3344 | SIZES: Short 38" - 50", Reg 34" - 50", Long 40" - 46"

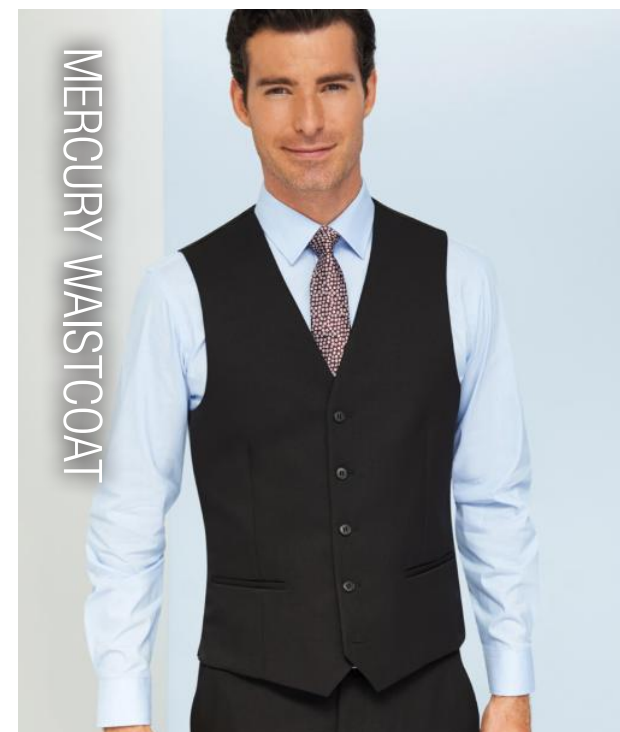
MARS TAILORED FIT TROUSER

335 gm² 100% polyester flat front tailored trouser, two side and on back pocket, key loop.

Available in: Black, Navy.

8648 | SIZES: WAIST: 26" - 48". LENGTH: Short 29.5", Reg 31.5", Long 33", Unfinished 36".

MERCURY WAISTCOAT



MERCURY WAISTCOAT

335 gm² 100% Polyester, 5 button front, two welt pockets, lining backed with adjuster.

Available in: Black, Navy.

1295 | SIZES: XS - XL

VENUS TROUSER



VENUS TROUSER

335 gm² 100% Polyester, straight leg, slim waistband with belt loops & key loop, two side pockets, mock rear pockets.

Available in: Black, Navy.

2256 | SIZES: 4 - 26 LENGTH: Short 27", Reg 29", Long 31", XL 33", Unfinished 36".

NEPTUNE DRESS



NEPTUNE DRESS

220 gm² 95/5 polyester/elastane ¾ sleeve, round neck, flattering fit with waistline detail and stretch lining.

Available in: Black, Navy.

2287 | SIZES: XS-XL

SATURN JACKET



SATURN TAILORED FIT JACKET

335 gm² 100% Polyester, short, one button jacket, tailored fit, slim lapel with seam detail, centre vent.

Available in: Black, Navy.

2255 | SIZES: Reg 4 - 26





We can dress you from head-to-toe with absolute quality and comfort. Our curated collection of ‘Good, Better and Best’ footwear includes Shoes for Crews, who design and manufacture a stylish collection that prevent slips, trips and falls in the workplace. These shoes provide slip-resistance to keep you safe with comfort, quality, value and style to keep you happy whatever your hospitality role



OLD SCHOOL IV MEN'S

Extra Cushioning. Trip Guard. Water-Resistant. Natural Fit. Coated Leather Upper. Removable Insole.
Available in: Black, White.

36111 (black) | **SIZES:** 5-12 (38-47) **38960** (white) | **SIZES:** 6-12 (39-47)



OLD SCHOOL IV WOMEN'S

Extra Cushioning. Trip Guard. Water-Resistant. Natural Fit. Coated Leather Upper. Removable Insole.
Available in: Black, White.

39362 (black) | **SIZES:** 2.5-9 (35-43) **36320** (white) | **SIZES:** 3-8 (36-42)



TRISTON II

CE Certified. OB Certified. Zone Traction. Trip Guard. Water-Resistant. Comfort Fit.
Available in: Black.

80047 | **SIZES:** 3-12 (36-47)



RADIUM

250gm Superior SFC slip-resistant outsole with TripGuard, water resistant, ultra-lightweight, removable cushioned insole, wide fit.
Available in: Black.

69578 | **SIZES:** 4-12 (37-47). 37-47 EU



ZINC BLACK

CE Certified. OB Certified. Ultra Lightweight. Zone Traction. Trip Guard. Water-Resistant. Comfort Fit. Vegan.
Available in: Black.

66064 | **SIZES:** 4-13 (37-48). 37 - 48 EU





LIBERTY WOMEN'S

Zone Traction. Trip Guard. Water-Resistant. Natural Fit. Vegan. Removable Insole.
Available in: Black.

37255 | **SIZES:** 2.5-43 (35-43)



LIBERTY WOMEN'S - WHITE OUTSOLE

Zone Traction. Trip Guard. Water-Resistant. Natural Fit. Vegan. Removable Insole.
Available in: Black w/ White Outsole.

35353 | **SIZES:** 2.5-9 UK (35-45)



FREESTYLE II

Zone Traction. Trip Guard. Water-Resistant. Natural Fit. Vegan. Removable Insole.
Available in: Black.

38140 | **SIZES:** 5-13 UK (38 - 48 EU)



FREESTYLE II - WHITE OUTSOLE

Zone Traction. Trip Guard. Water-Resistant. Natural Fit. Vegan. Removable Insole.
Available in: Black w/ White Outsole.

32835 | **SIZES:** 5-13 UK (38 - 48 EU)



CONDOR MEN'S

CE Certified. OB Certified. Zone Traction. Trip Guard. Ventilated. Water-Resistant. Spill Guard. Natural Fit. Leather Upper. Removable Insole.
Available in: Black, White.

28777 (black) | **SIZES:** 5-13 (38-48) **29166** (white) | **SIZES:** 5-12 (38-47)



CONDOR WOMEN'S - WHITE

CE Certified. OB Certified. Zone Traction. Trip Guard. Ventilated. Water-Resistant. Spill Guard. Natural Fit. Leather Upper. Removable Insole.
Available in: Black, White.

26730 (black) | **SIZES:** 2.5-9 (35-43) **27041** (white) | **SIZES:** 3-8 (36-42)



CATER II MEN'S & WOMEN'S

CE Certified. OB Certified. Trip Guard. Water-resistant. Removable Insole.
Available in: Black.

41439 | MEN'S **SIZES:** 5-15 (38-50)
40187 | WOMEN'S **SIZES:** 2.5-8 (35-42)



SALOON II MEN'S & WOMEN'S

CE Certified. OB Certified. Trip Guard. Water-resistant. Removable Insole.
Available in BLACK

43261 | MEN'S **SIZES:** 5-15 (38-50)
47808 | WOMEN'S **SIZES:** 2.5-8 (35-42)



WILLA WOMEN'S

CE Certified. OB Certified. Trip Guard. Water-Resistant. Tailored Fit. Leather Upper. Removable Insole.
Available in: Black.

55452 | **SIZES:** 2.5-8 (35-42)



EXECUTIVE WING TIP III MEN'S

CE Certified. OB Certified. Water-Resistant. Natural Fit. Leather Upper. Removable Insole.
Available in: Black.

2030 | **SIZES:** 5-13 UK (38 - 47 EU)

SHOES FOR CREWS SHOE SIZES								
EU Women's Size	35	36	37	38	39	40	41	42
UK Women's Size	2.5	3	4	5	6	6.5	7	8

SHOES FOR CREWS SHOE SIZES														
EU Men's Size	38	39	40	41	42	43	44	45	46	47	48	49	50	
UK Men's Size	5	6	6.5	42	8	9	9.5	10	11	12	13	14	15	



MARY JANE II WOMEN'S

CE Certified. OB Certified. Water-Resistant. Wide Fit. Leather Upper.
Available in: Black.

3002 | **SIZES:** 2.5-9.5 UK (35 - 44 EU)



The ultimate professional footwear style choice, suitable for challenging environments, providing ultimate support throughout your shift. At the heart of all models is the original Birkenstock footbed. The construction makes it feel like you're standing in sand, helping your feet feel as comfortable as possible for hours on end, supporting health and promoting wellbeing

BIRKENSTOCK



TOKIO SUPER GRIP

Anatomically shaped cork-latex footbed. Upper: smooth leather. Footbed lining: suede. Sole: cushioning EVA midsole with nonslip, oil and grease resistant rubber outsole. Individually adjustable metal pin buckles.

Available in: Black.

0061194/96 (BLACK) | SIZES: 2.5-13 (UK) / 35-48 (EU)



BOSTON SUPER GRIP

Anatomically shaped cork-latex footbed. Upper: natural leather. Footbed lining: suede. Sole: slip-resistant rubber-EVA sole. One strap with an individually adjustable metal pin buckle.

Available in: Black.

0060194/96 (BLACK) | SIZES: 2.5-13 (UK) / 35-48 (EU)



SUPER BIRKI

Removable, anatomically shaped cork-latex footbed, washable at up to 30°C. Material: PU (polyurethane) Footbed lining: fabric. Sole: PU (polyurethane), nonslip, oil and grease-resistant

Available in: Black.

0068011 (BLACK) | SIZES: 2.5-13 (UK) / 35-48 (EU)



QS500

Removable, anatomically shaped cork-microfiber footbed. Material: water-resistant oiled nubuck leather (WRU). Footbed lining: microfiber. Sole: nitrile rubber (SRC) Steel toe (200 joules) with scratch-resistant toe cap.

Available in: Brown.

1011232 (BROWN) | SIZES: 2.5-13 (UK) / 35-48 (EU)



QS700

Removable, anatomically shaped cork-microfiber footbed. Material: water-resistant oiled nubuck leather (WRU) Footbed lining: microfiber nitrile rubber (SRC) steel toe (200 joules) with scratch-resistant toe cap.

Available in: Brown.

1011237 (BROWN) | SIZES: 2.5-13 (UK) / 35-48 (EU)

BIRKENSTOCK SIZE CHART			
WOMENS		MENS	
EU	UK	EU	UK
35	2.5	39	5.5
36	3.5	40	7
37	4.5	41	7.5
38	5	42	8
39	5.5	43	9
40	7	44	9.5
41	7.5	45	10.5
42	8	46	11.5
43	9	47	12
		48	13
		49	14
		50	14.5



WearerTech who specialise in producing comfortable slip-resistant shoes. Their shoes have been created in collaboration with Salford University's Knee, Ankle and Foot Research Centre using biomechanics to eliminate pain and discomfort specifically for those working in catering and hospitality.



RELIEVE
Closed back lace-up, comfortable lightweight shoe, stretch linings, breathable uppers, raised heel, Ultra-Grip® slip-resistant technology. Add your preferred Insole to your order.
Available in: Black Upper/Black Sole, Black Upper/White Sole, Blue Upper/White Sole, Brown Upper/White Sole.
4100 | **SIZES:** 36 - 47 EU, 3 - 12 UK

RELIEVE SAFETY TOE
Available in: Black Upper/Black Sole
6100 | **SIZES:** 36 - 47 EU, 3 - 12 UK



TRANSFORM
Lightweight, closed-back laces-ups with stretch lining, breathable uppers, raised heel and Ultra-Grip® slip-resistant technology sole. Add your preferred Insole to your order.
Available in: Black Upper/Black Sole, Black Upper/White Sole.
4400 | **SIZES:** 36 - 47 EU, 3 - 12 UK

TRANSFORM SAFETY TOE
Available in: Black Upper/Black Sole
6400 | **SIZES:** 36 - 47 EU, 3 - 12 UK



REFRESH
Open back, lightweight, raised heel, breathable uppers, stretch linings, Ultra-Grip® slip-resistant technology, safety toe cap option, choice of three insoles (see page 163). Add your preferred Insole to your order.
Available in: Black Upper/Black Sole, Black Upper/White Sole.
4300 | **SIZES:** 36 - 47 EU, 3 - 12 UK

REFRESH SAFETY TOE
Available in: Black Upper/Black Sole.
6300 | **SIZES:** 36 - 47 EU, 3 - 12 UK

WEARERTECH SHOE SIZES																
EU Women's Size	35	36	37	38	39	40	41	42								
EU Men's Size				38	39	40	41	42	43	44	45	46	47	48	49	50
UK Women's Size	2	3	4	5	6	6.5	7	8	9	10	10.5	11	12			
UK Men's Size		3	4	5	6	6.5	7	8	9	10	10.5	11	12			



Headwear & Accessories Collection

No look is complete without the perfect accessory. Keep clean and cool while looking the part with our many headwear choices and keep safe and hygienic with our many face covers



BCCT-GRY
(grey)

BCCT-BLU
(blue)

BCCT-RED
(red)

BCCV-BLK
(solid black)

HC008-GRY
(solid grey)

HC008-RED
(solid red)

COOL VENT™ BASEBALL HAT

150 gm² / 4.4 oz, 100% polyester all over Cool Vent™ fabric, contrast colour sandwich trim, adjustable buckle closure, one size fits most
Available in: Grey, Blue, Red, Solid Black, Solid Grey, Solid Red.

BCCT, BCCV-BLK, HC008-GRY & HC008-RED | SIZE: ONE SIZE FITS MOST



DFWB-WHT
(white)

DFBB-BLK
(black)

DFCV-GRY
(grey)

DFCV-DGY
(deep grey)

DFCV-PNS
(fine stripe)

DFCV-MER
(merlot)

COOL VENT™ BEANIE

210 gm² / 6.2 oz, 65/35 poly/cotton base, Cool Vent™ mesh top, adjustable Velcro® closure, one size fits most
Available in: White, Black, Grey, Deep Grey, Finestripe.

DFWB-WHT, DFBB-BLK, DFCV-GRY DFCV-DGY, DFCV-PNS & DFCV-MER | SIZE: ONE SIZE FITS MOST



BASEBALL HAT

260 gm² 7.8oz, 100% cotton , adjustable buckle closure.
Available in: Black.

BCSO | SIZE: ONE SIZE FITS MOST



HEAD WRAP

210 gm² 6.2oz 65/35 poly/cotton, ties on back.
Available in: Black.

SCBL | SIZE: ONE SIZE FITS MOST



NTM (nutmeg)

SGY (steel grey)

ROCKFORD DRIVER CAP

315 gm² / 9.3 oz, 100% cotton, enzyme washed canvas, elastic inner band, two sizes available
Available in: Nutmeg, Steel Grey.

HBKV010 | SIZES: S / M & L / XL



BLK (black)

GRY (grey)

WHT (white)

DRIVER CAP

260 gm² / 7.8oz, 96/4 Cotton twill with spandex, built-in sweat guard, two sizes available
Available in: Black, Grey, White.

HB001 | SIZES: S / M & L / XL



HARTFORD BEANIE

160 gm² / 4.7 oz, 65/35 poly/cotton, contrast Cool Vent™ top, adjustable Velcro® closure, one size fits most
Available in: Slate Blue.

HBLW014 | SIZE: ONE SIZE FITS MOST



BLK (black)

WHT (white)

CHEF HAT

210 gm² / 6.2 oz, 65/35 poly/cotton, adjustable Velcro® closure, one size fits most
Available in: Black, White.

CHAT BHAT | SIZE: ONE SIZE FITS MOST



WHT (white)

LE TOQUE EUROPEAN STYLE

Lightweight poly-viscose, non-woven, oval top pleat, fully adjustable, one size fits most in either 9 inches or 12 inches (23cm Height or 31cm Height)
Available in: White.
PLEA-WHT-9 | SIZE: 9" (23cm)
PLEA-WHT-12 | SIZE: 12" (31cm)



BLK (black)

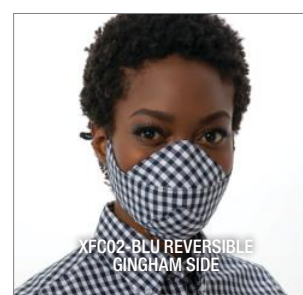
WHT (white)

CHEF TOQUE

210 gm² / 6.2 oz, 65/35 poly/cotton base. Adjustable buckle closure, metal grommet air vents, pre-tested for strength and durability.
Available in: Black, White.

TOCP | SIZE: ONE SIZE FITS MOST





SKILD SERIES™ XFC02 FACE COVER

Reversible, washable, reusable, lightweight, breathable face cover. Contoured panel design for comfort and adjustable ear loops. No embroidery on this item. **No returns or exchanges on this item.** Available in: **Black:** Black denim side: 4.7 oz./160gm² 100% cotton, black gingham side: 3.1 oz./106 gm² 65/35 poly/cotton.

XFC02 (Pack of six) | **SIZE:** ONE SIZE FITS MOST.

DISCLAIMER:

SKILD Series™ face coverings are individually wrapped to maintain hygiene standards. These face coverings are not surgical masks or for other medical use and are not FDA-approved, CDC-certified or designed to be any other type of medical-grade mask. However, CDC has advised the use of simple cloth face coverings to slow the spread of viruses and help people, who may have a virus and do not know it, from transmitting it to others. For individual use only. Do not share face coverings.

The AXQ face cover is designed to aid defence against the spread of infection. It makes no assurances that it can prevent transmission or infection of disease or viruses. It is not a medical or clinical face mask and as such should not be used for this purpose, it should not be used under any circumstances where infection level is high and in any exposure to high level heat sources or combustible substances.

All face covers and masks for sale through Chef Works are for individual use only. Do not share face coverings. No exchanges or returns on face covers or face masks.



SKILD SERIES™ XFC01 FACE COVER

Reversible, washable, reusable, lightweight, breathable face cover. Contoured panel design for comfort and adjustable ear loops. No embroidery on this item. **No returns or exchanges on this item.** Available in: **Black:** Black denim side: 4.7 oz./160gm² 100% cotton, black gingham side: 3.1 oz./106 gm² 65/35 poly/cotton.

XFC01 (Pack of six) | **SIZE:** ONE SIZE FITS MOST.



AXQ FACE COVER

95/5 Polyester/Elastane 4-way stretch breathable scuba fabric. Non-surgical face cover with two ear slots on each side to adjust fit. Washable at 60°. No returns or exchanges on this item.

Available in: Black, White.

XQ001 (Pack of 50) | **SIZE:** ONE SIZE FITS MOST.

AXQ



EMBROIDERY & ORDER INFO

Chef Works offers in-house embroidery services to help you create a look as individual as you and your company. With impeccable attention to detail, our embroidery experts can help transform your garments into an extension of your brand concept giving your business apparel the professional finish by adding personalisation and corporate branding.

EMBROIDERY COSTS LOGOS

- Logo set up fee: £25.00
- Logo embroidery:
 - 1-4 units: £4.60 each
 - 5 or more units: £3.60 each
- Up to 12cm width. Above 12cm surcharge will be applied.

TEXT

- Specify font style and thread colour from our options.
- Text one line: £4.00.
- Text two lines: £5.75
- FLAG
 - Max 4cm width. Larger size surcharge applies
 - Flag: £5.00 each for small collar insignias.
 - Larger flags and placements will be treated like a logo.
 - Cap Surcharge £22.50.
 - Rush Charge at the discretion of the Embroidery Team.
- All prices plus VAT.
- All pricing subject to change without notice.

SUBMITTING EMBROIDERY REQUESTS

- Logos can be embroidered on most Chef Works garments.
- Logos will remain on file for future orders, so you will only pay one set-up fee unless your logo changes.
- File type: High res JPG or EPS/DST file
- Colour: Pantone/PMS/Madeira (please specify your colour reference).
- Email: customerservice@chefworks.co.uk

ADDITIONAL DETAILS

Please allow a further 5-7 working days, plus shipping time, for delivery on all embroidered/customised orders. Embroidered/customised orders are non-returnable and non-refundable. For every digitised logo/line/flag, one sample electronic digital 'sew out' can be emailed free of charge. Customer approval is required prior to embroidering the garment.

INTERNATIONAL CUSTOMERS

Please note that prices and services may vary from country to country. Contact your local Chef Works Distributor for further information: <https://www.chefworks.co.uk/uniforms/corporate/globalnetworks>

UK FONTS

Choose from our font library. If you have a specific font request please contact Customer Support and we will do our best to assist. Additional costs may incur.

Script 8
Block 1
Script 6
Typewriter
Helvetica
Script 2
Centurian
Block 2
MV Boli
Times New Roman

UK EMBROIDERY COLOURS

We use Madeira Poly Neon threads to ensure colour/thread strength and longevity. Choose from our standard colour library. If you have a specific colour request, please contact Customer Support and we will do our best to assist. Additional costs may incur.

1800 (black)	1801 (white)	1758 (brown)	1659 (dk brown)	1887 (merlot)	1784 (burgundy)
1839 (red)	1765 (orange)	1615 (dk grey)	1918 (grey)	1611 (lht grey)	1810 (silver)
1650 (green)	1970 (dk green)	1701 (lht green)	1922 (purple)	1967 (navy blue)	1934 (royal blue)
1843 (blue)	1932 (lht blue)	1846 (teal)	1924 (yellow)	1792 (gold)	1955 (citrus burst)
1775 (dk federal blue)	1857 (chocolate lab)	1885 (camel)	1718 (overcast grey)	1738 (champagne)	1509 (rhubarb)

TO ORDER

- CALL: +44(0)113 256 8677
- ONLINE: www.chefworks.co.uk
- EMAIL: orders@chefworks.co.uk
- If outside the U.K., please consult your local Chef Works team. You can find your nearest by visiting: www.chefworks.co.uk/uniforms/corporate/globalnetworks

PAYMENT

We accept Visa, MasterCard and American Express. Payment terms are available on approved accounts. Sales tax is applicable in all countries except those states who do not charge sales tax. Prices on our websites are subject to change without notice.

BACK ORDERS

Chef Works maintains a large inventory, however, occasionally a shortage will occur. It is our policy to fill back orders as soon as the merchandise is available, unless otherwise specified at the time of order. Chef Works will send an automated email notification for all pending back orders.

RETURNS POLICY

At Chef Works, one of our core values is customer satisfaction. Should you need to return an item, we will gladly accept it within 30 days of purchase provided it is in resalable condition and has not been worn, damaged, altered, laundered or embroidered. A Returns Authorisation number is required for all returns. For additional details regarding our return policy, please visit our website at www.chefworks.co.uk or contact Customer Support on +44(0)113 256 0677 customerservice@chefworks.co.uk

Chef Works has the perfect fit for you. To find your perfect fit, we've provided you with three easy-to-follow steps outlined below. Please note our proprietary designs give Chef Works garments individual fits to allow for maximum comfort and function.

FIND YOUR PERFECT FIT IN 3 EASY STEPS

1

How do you want your garment to fit? Choose your fit from the colour-coded charts shown on the next few pages.

2

What are your measurements? All of our garment size charts refer to actual chest, waist or hip measurements. Match yours to our charts to find your size.

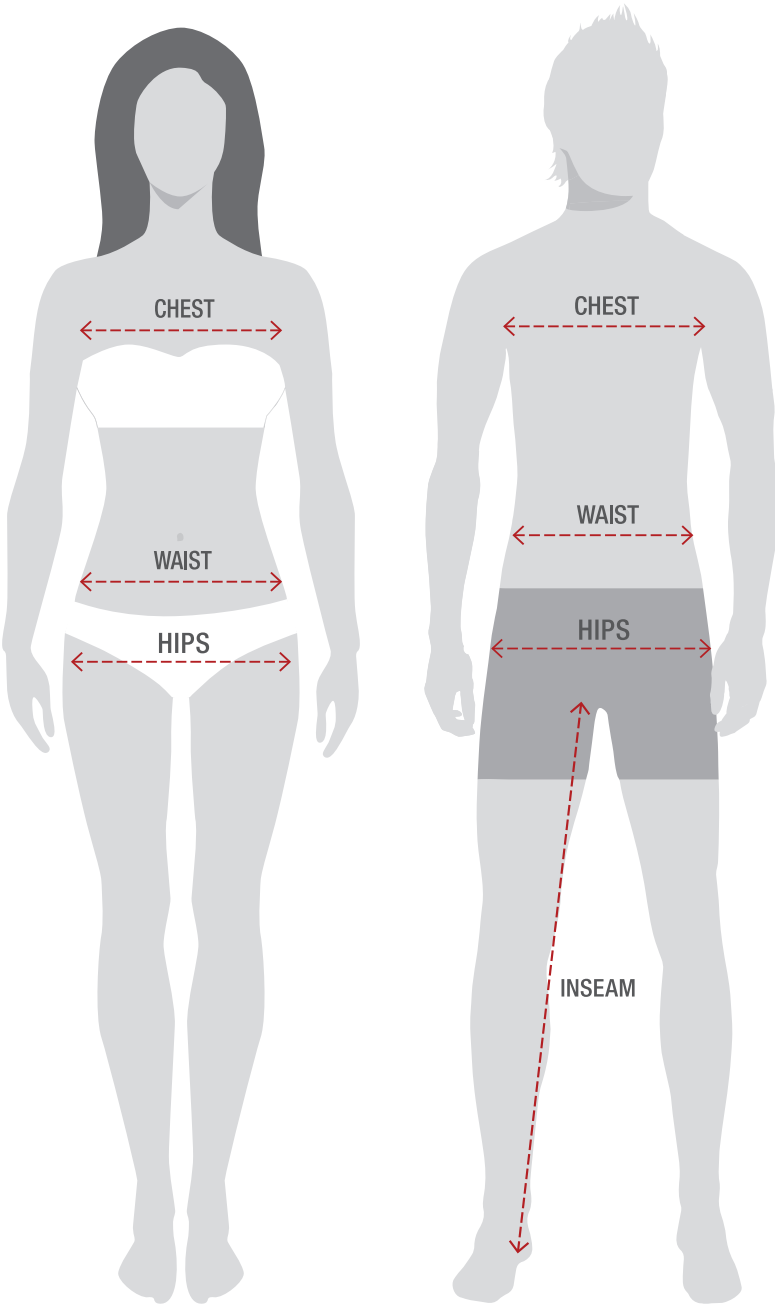
3

Pick your garment!

MEASUREMENT GUIDELINES

To get the best fit, stand straight and relax. With a measuring tape, use the illustration shown at the right as a guide and follow instructions below.

- CHEST:** Measure all the way around your body from the fullest part of the chest/bust with your arms down.
- WAIST:** Measure around your natural waistline above the hips.
- HIPS:** Measure around the widest part of your hips.
- INSEAM:** Measure from the base of the crotch to the bottom of your heel.



MEN'S COATS

At Chef Works, we know coats. We also know we have a coat to suit your style. Categorised here in three different fits, end the guess work and find the one that's right for you.

COAT FITS

MF

Modern Fit
Tailored fit, cut slim through the chest and body.

CF

Classic Fit
Wider cut through the chest; wider sleeves for increased flexibility.

GF

Generous Fit
Loosest fit, cut extra-wide through the body and sleeves.

1

MEN'S/UNISEX COATS (ALPHA)

Chest (in)	32/34	36/38	40/42	44/46	48/50	52/54	56/58	60/62	64/66	68/70	72/74
Size	XS	S	M	L	XL	2XL	3XL	4XL	5XL	6XL	7XL
Chest (cm)	81/86	91/97	102/107	112/117	122/127	132/137	142/147	152/157	163/168	173/178	183/188

2

MEN'S/UNISEX COATS (NUMERIC)

Chest (in)	30	32	34	36	38	40	42	44	46	48	50
Size	30	32	34	36	38	40	42	44	46	48	50
Chest (cm)	76	81	86	91	96	102	107	115	117	122	127

MEN'S/UNISEX COATS CONT'D (NUMERIC)

Chest (in)	52	54	56	58	60	62	64	66	68
Size	52	54	56	58	60	62	64	66	68
Chest (cm)	132	137	142	147	152	157	163	168	173

MEN'S SHIRTS

Shirts are often part of your first impression. Make the right impression in a stylish, well-fitted shirt. Keep your front of the house looking sharp and your kitchen staff looking clean and professional in any one of our wide selection of shirts.

SHIRT FITS	FF	Form Fit A polished fit with stretch fabrics that silhouettes the body.										
	MF	Modern Fit Tailored fit, cut close through the chest, slimmed sleeves.										
	CF	Classic Fit Broadly cut across the shoulders, cut wide through the chest and body, loose-fitting sleeves.										
1	MEN'S/UNISEX SHIRTS											
	Chest (in)	32/34	36/38	40/42	44/46	48/50	52/54	56/58	60/62	64/66	68/70	72/74
	Size	XS	S	M	L	XL	2XL	3XL	4XL	5XL	6XL	7XL
	Chest (cm)	81/86	91/97	102/107	112/117	122/127	132/137	142/147	152/157	163/168	173/178	183/188

MEN’S PANTS

Chef Works takes pants as seriously as it does coats. We believe pants have three primary purposes; comfort, feel, and function. But that doesn't mean you need to sacrifice style. We know we have the right fit in combination with the right features for you.

PANT FITS

MF

Modern Fit

Our Modern Fit sits on the natural waist, is straight through the hip and thigh, with a straight leg opening.

MT

Modern Straight Fit

Sits slightly above hip, tapered silhouette through the thigh for a contemporary look, 79 cm inseam. Straight through the leg and knee, tapered 45 cm leg opening.

MS

Modern Slim Fit

Sits at hip, slim silhouette through the thigh and leg for a fitted look, 79 cm inseam. Tailored 40cm leg opening.

CF

Classic Fit

Our Classic Fit sits on the natural waist, is relaxed through the hip and thigh, and has a straight leg opening.

1

MEN'S PANTS (ALPHA)

Waist/hips (in)	26/28	30/32	34/36	38/40	42/44	46/48	50/52	54/56	58/60	62/64	66/68
Size	XS	S	M	L	XL	2XL	3XL	4XL	5XL	6XL	7XL
Waist/hips (cm)	66/71	76/81	86/91	97/102	107/112	117/122	127/132	137/142	147/152	157/162	167/172

2

MEN'S PANTS (NUMERIC)

Waist/hips (in)	24	26	28	30	32	34	36	38	40	42	44
Size	00	0	2	4	6	8	10	12	14	16	18
Waist/hips (cm)	61	66	71	76	81	86	91	97	102	107	112

Women's Sizing

WOMEN’S COATS

At Chef Works, we know coats. We also know we have a coat to suit your style. Categorized here in two different fits. End the guess work and find your perfect fit.

COAT FITS

MF

Modern Fit
Tailored for a feminine fit with a slightly relaxed silhouette.

SF

Slim Fit
Updated feminine fit skims the body for a form-fitting look.

CF

Classic Fit
Relaxed fit tailored to the female form without compromising professional look.

1

WOMEN'S COATS

Chest (in)	30/32	34/36	38/40	42/44	46/48	50/52	54/56	58/60	62/64
Size	XS	S	M	L	XL	2XL	3XL	4XL	5XL
Chest (cm)	76/81	86/91	97/102	107/112	117/122	127/132	137/142	147/152	157/163

WOMEN’S SHIRTS

SHIRT FITS	FF	Form Fit A polished fit with stretch fabrics that fit snugly to the curve of the body.								
	SF	Slim Fit Figure-defining silhouette offers a sleeker, slimming fit.								
	MF	Modern Fit Tailored for a feminine fit with a slightly relaxed silhouette.								
	CF	Classic Fit Easy fit silhouette skims the body with an updated drape for a professional, pulled together look.								
1	WOMEN'S SHIRTS									
	Chest (in)	30/32	34/36	38/40	42/44	46/48	50/52	54/56	58/60	62/64
	Size	XS	S	M	L	XL	2XL	3XL	4XL	5XL
	Chest (cm)	76/81	86/91	97/102	107/112	117/122	127/132	137/142	147/152	157/163

WOMEN’S PANTS

Chef Works take pants as seriously as it does coats. We believe pants have three primary purposes; comfort, feel, and function. However that doesn't mean you need to sacrifice style. We know we have the right fit in combination with the right features for you. Find your perfect fit with our wide selection of pants.

PANT FITS

SF

Slim Fit

Sits at hip, fitted silhouette through the thigh and leg for a slim look, 79 cm inseam. Tailored 41 cm leg opening.

MF

Modern Fit

Sits on natural waist, streamlined silhouette through the thigh and leg for a polished look, 79 cm inseam. Slight bootcut 47 cm leg opening.

RF

Relaxed Fit

Sits on natural waist, relaxed silhouette through thigh and leg for a professional look, 80 cm inseam. Slight flare 51 cm leg opening.

1

WOMEN'S PANTS (ALPHA)

Waist/hips (in)	26/28	30/32	34/36	38/40	42/44	46/48	50/52
Size	XS	S	M	L	XL	2XL	3XL
Waist/hips (cm)	66/71	76/81	86/91	97/102	107/112	117/122	127/132

2

WOMEN'S PANTS (NUMERIC)

Waist/hips (in)	24	26	28	30	32	34	36	38	40	42	44
Size	00	0	2	4	6	8	10	12	14	16	18
Waist/hips (cm)	61	66	71	76	81	86	91	97	102	107	112

Corporate Headquarters

Chef Works can be found in over 90 countries across the globe. To find your nearest outlet or distributor please contact your nearest corporate office or visit:
<https://www.chefworks.co.uk/uniforms/corporate/globalnetworks> for specific country contact details

ASIA

CHEF WORKS CHINA LTD.

Unit A- C, 4/F, World Tech Centre, 95 How Ming Street, Kwun Tong, Hong Kong
Tel: (+852) 2529 3700
Fax: (+852) 2529 3701
WhatsApp: (+852) 55716821
Info: sales@chefworks.com.hk
Website: www.chefworks.com.hk

CANADA

CHEF WORKS CANADA INC.

35 Fulton Way, Unit 2, Richmond Hill, Ontario, L4B 2N4, Canada
Toll Free: 1 (888) 640 2433
Tel: +1 (905) 761-7220
Fax: +1 (905) 660 7975
Info: chefworks@chefworks.ca
Website: www.chefworks.ca

EUROPE

CHEF WORKS EUROPE, LTD.

7 Springfield Commercial Centre, Bagley Lane, Leeds LS28 5LY, UK
Tel: +44 (0)113 256 8677
Info: customerservice@chefworks.co.uk
Website: www.chefworks.co.uk

LATAM

CHEF WORKS CHILE

Gilberto Fuenzalida #56, Las Condes, Santiago, Chile
Director: Alvaro Waldman Reinberg Tel: (+56) 998227634
Tel: (+56) 2 2 220 2000
Info: alvaro@chefworksworld.cl
Website: www.chefworks.cl

INTERNATIONAL

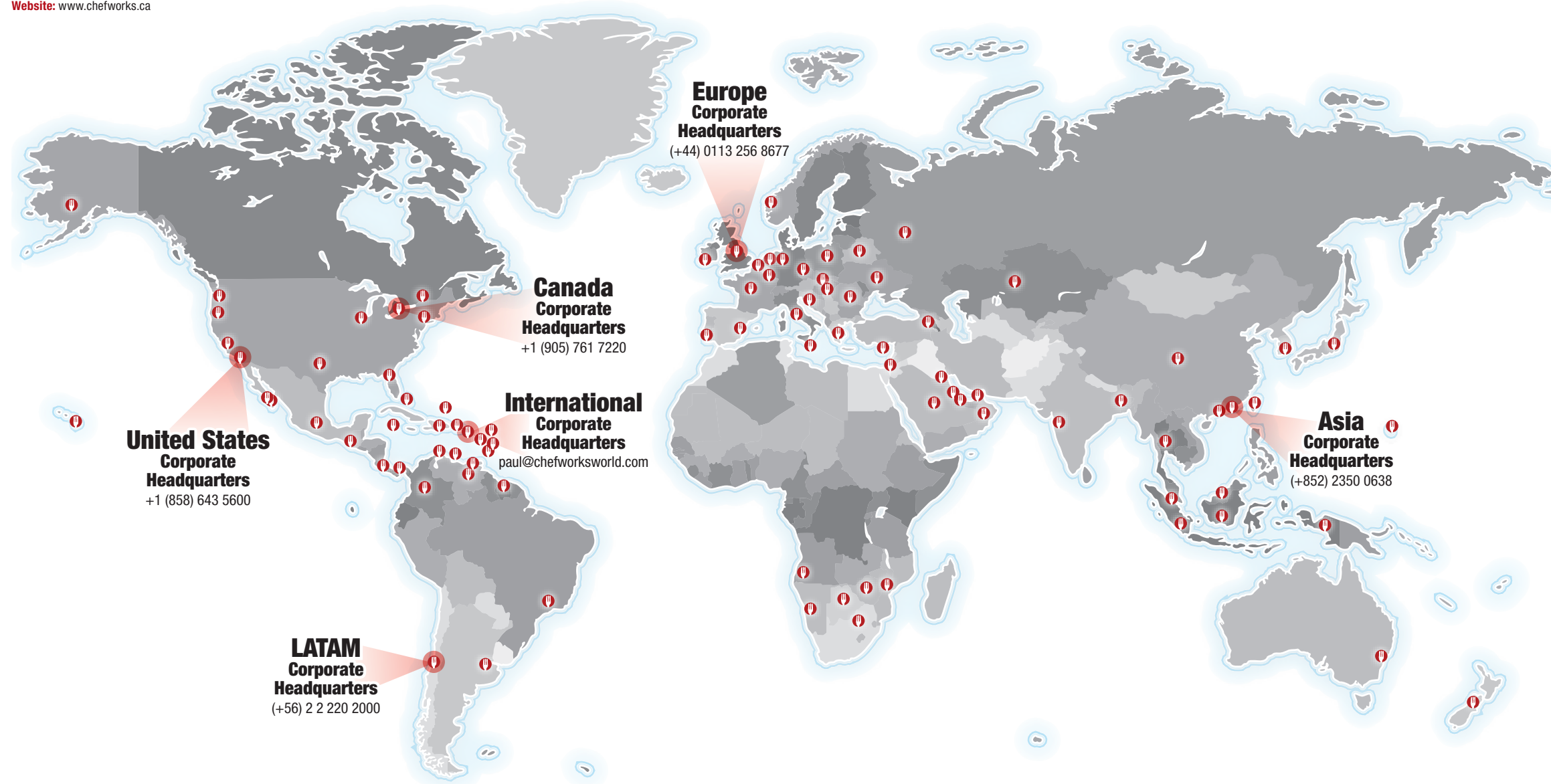
CHEF WORKS INTERNATIONAL, LTD.

Geneva Place 2nd Floor 333 Waterfront Drive Road Town,
Tortola British Virgin Islands
Info: paul@chefworksworld.com

UNITED STATES OF AMERICA

CHEF WORKS, INC.

12325 Kerran St, Poway, CA 92064, USA
Toll Free: +1 (800) 372 6621
Tel: +1 (858) 643 5600
Fax: +1 (858) 643 5624
Info: orders@chefworks.com
Website: www.chefworks.com



Special Thanks...

to the following chefs, locations and restaurants in the USA, UK, Canada and Mexico:

David Baker, Ayres Hotel, Costa Mesa, CA. Barret Beyer, Star Studded Events & Catering, New York, NY. Shihomi Borillo, Azuki Sushi, San Diego, CA. Marisela Cervantes, Chef Selary - Personal Chef & Private Events, Minneapolis, MN. Dolores Fleming, Islas Cultivated, Las Vegas, NV. Giuseppe Ciuffa, Giuseppe Restaurants & Fine Catering, La Jolla, CA. Chris Crary, CC Concepts Inc., Los Angeles, CA. Dominique Crenn, Atelier Crenn, San Francisco, CA. Louie Jocson, California Fish Grill, Orange County, CA. Ramon Douglas, RF Catering & Chatsworth Charter High School. Anthony Endy, Alisal Guest Ranch & Resort, Orange County, CA. Micah Fields, The Standard, Los Angeles, CA. Terry French, World Extreme Chef. Antonio Friscia, Legal Restaurants, San Diego, CA. Bernard Guillas, The Marine Room, La Jolla, CA. Adam Gunderson, San Diego, CA. Sharone Hakman, Hak's Food, Los Angeles, CA. Fabrice Hardele, The Westgate Hotel, San Diego, CA. Charles Imbelli, True Food Kitchen, Austin, TX. George Kapetsonis, Marriott Marquis & Marina, San Diego, CA. Chad Kilgore, Cup of Dreams Foundation, San Diego, CA. Jenny Behm-Lazzarini, Red Fin Crudo, Providence, RI. Cory Newman, Vista, CA. Javier Plascencia, Restaurant Jazamango, Todos Santos, Baja California Sur. Lance Repp, University Club atop Symphony Towers, San Diego, CA. Russell Rummer, San Diego, CA. Deborah Scott, Cohn Restaurant Group, San Diego, CA. Andrew Spurgin, Andrew Spurgintm, San Diego, CA. Kevin Templeton, barleymash, San Diego, CA. Fern Tran, Legal Restaurants, San Diego, CA. Kristianne Uy, Chef K LA, Los Angeles, CA. Vaughn Vargus, University of California San Diego, La Jolla, CA. David Warner, Eat. Drink. Sleep., San Diego, CA. Rodney Williams, Strawberry Creek Inn, Idyllwild, CA. Penelope Wong, Glenmoor Country Club, Cherry Hills Village, CO. Graham Elliot, Gideon Sweet, Chicago, IL. Bobby Trevino, Chicago, IL. Massimo Capra, Massimo Capra Restaurants, Toronto, ON. Ginger Niles, La Valencia Hotel, La Jolla, CA. Logan Guleff, Logan's Underground Supper Club, Memphis, TN. Jet Tila, Los Angeles, CA. Brian Malarkey, Herb & Wood, San Diego, CA. Claudia Sandoval, Chef Claudia's Cocina, San Diego, CA. Karla Navarro, The Kitchen Studio, Tijuana, MX. Lamar Moore, Currency Exchange Café, Chicago, IL. Stacey Poon-Kinney, The Trails Eatery, San Diego, CA. Jenny Goycochea, Del Mar, CA. Phillip Esteban, CH Projects, San Diego, CA. Hunter Fieri, Las Vegas, NV. Priscilla Curiel, Priscilla Chef Catering, Chula Vista, CA. Carla Hall, Co-host of ABC's The Chew, New York, NY. Elizabeth Falkner, Falk Yeah! Productions, New York, NY. Einat Admony, Bar Bolonat, New York, NY. Alex Raij, Txikito, New York, NY. Frank Bilotti, Mr. Ciao, Staten Island, NY. Chip Miller, Michael Jordan's Steakhouse, Chicago, IL. Russell Jackson, Popfoods TV, New York, NY. Ivana Raca, Raca Café & Bar, Toronto, ON. Thiago Silva, CHEW Innovation, Boston, MA

San Diego locations include:

Vintana Wine + Dine, Escondido, CA. One Door North, The Smoking Goat Restaurant, Herb & Wood, Herringbone La Jolla, Ironside Fish & Oyster, Luce Loft, JRDN, Ballast Point Brewing Company Miramar, The Cork & Craft, Craft & Commerce, Bread & Cie, Porkyland, The Lot, Cutwater Spirits, Soda & Swine Liberty Station, India Street, Little Italy, Liberty Public Market, Fireside by the Patio, BASIC Bar/Pizza, L'Auberge Del Mar Hotel, OB Warehouse (Closed), Table No. 10 (Closed), La Focaccia (Closed), Gang Kitchen (Closed)

Los Angeles locations include:

Terranea Resort & Spa

New York locations include:

Mr. Ciao's, Carla Hall's Southern Kitchen (Closed)

UK locations include:

Hypha in Chester, The Church Green in Cheshire and The Royal Garden Hotel in London.

Embroidery Credit:

Sunfare, SeaSalt Restaurant, Mexx 32, The DogHouseKowloon

Photography Credits:

Aaron Brown, Jim Coit, Don Diaz, Aidin Foster, Martin Rusch, Michael Spangler, Jason Moore, David Lindsay, Steve Bootle, Jason Russell and third party suppliers.

ITEM CODE	PAGE
1726	142
0815	156
8934	142
0915-2325	101
1295	153
1300	149
131126	101
133742	167
133746	167
133749	167
133751	167
133753	167
133754	167
133757	167
133759	167
1449	150
1463	141
2030	161
2214	90
2222	144
2224	145
2229	147
2234	145
2246	147
2255	153
2256	153
2257	152
2258	152
2260	147
2263	143
2270	90
2272	151
2275	151
2276	151
2287	153
2289	145
2293	151
2294	145
2303	55
2306	147
2310	141
2319	88
2344	140
2362	89
2363	142
2364	142
2323A	87
26730	160
27041	160
28777	160
29166	160
301	155
3002	161
3125	149
32835	160
3344	152
3552	150
35353	160

ITEM CODE	PAGE
36111	159
36320	159
37255	160
3836	140
38140	160
38960	159
39362	159
4050	157
4060	157
4070	157
4100	155
4200	155
4300	155
4400	155
40187	161
41439	161
43261	161
47808	161
5200	155
5300	155
5647	155
55452	169
6100	156
6200	156
6300	155
6400	157
66064	159
69578	159
7640	90
7882	88
7886A	87
7889	90
80047	159
8387	144
8557	148
8648	152
8655	144
8755	150
8902	55
9077-7847	99
A	
A100	139
AB012	140
AB024	134
AB034	130
AB035	132
AB036	132
ABAQ054	121
ABCAQ004	120
ABCCD006	106
ABCD056	127
ABCKV003	124
ABCWT001	122
ABKV053	125
ABN01	110
ABN01W	110
ABN02	112
ABN02W	113

ITEM CODE	PAGE
ABR01	114
ABS02	116
ABWT051	123
ABX01	118
ABXX052	127
ACN01	109
AHN01	119
AHN05	111
AHN07	117
AHR01	115
AHWAQ014	121
AHWKV013	125
AHWWT001	123
AHWXX012	129
ALWCD026	127
ALWXX022	129
APKBL	140
APKDC	140
AQ015	98
AQ025	98
AQ050	57
AQ051	55
AQ060	57
AW046	131
AW047	131
AW048	133
AW049	133
AW054	133
AWCD016	127
AWKV056	135
B	
BA210/BA210F	100
BBLW	52
BCCT	170
BCLZ008	27
BCMC010	28
BCWLZ005	43
BCWSZ006	42
BHAT	171
BLSS	34
BPTA	141
BPTA	137
C	
CBS01	5, 6, 14, 16
CBS01W	6, 38, 39
CES01	22
CES02	24
CES04	19
CEZ01	21
CFLA	141
CPWO	54
CQZ01	144
CQZ01W	145
CSAA	140
CSBA	140
CSCV	87
CSMC	88
CSMV	87

ITEM CODE	PAGE
CSWC	89
CSWV	87
CVBP	51
D	
D500	86
DFBB	171
DFCV	171
DFWB	171
DPDS	84
DPDS	80
E	
ECHR	18
ECSS	17
EXDZ001	19
EXWDZ002	40
F	
F10	139
F24	141
F28	141
F35	139
F8	139
F9	139
H	
HB001	170
HBKV010	170
HBLW014	171
HC008	170
J	
JLCV	30
JLLS	31
L	
45	43
N	
NBBP	53
NBBZ	53
NBCP	53
P	
PBE01	48
PBN01	52
PBN01W	52
PC001	50
PCSS	35
PEE01	49
PLEA	171
PR560	58
PR258	90
PR570	58
PR683	104
PR681	104
PS005	51
PW005	54
PR803	97
PR804	97
PW101	55
PW103	55
R	
REA100	12, 139
R231F	97

ITEM CODE	PAGE
REAPK	9, 140
REBCLZ	7
RE36A	96
REDFCV	11
REF24	10, 139
REPBN01	11
REWCCW	9
RESSSN	8
RX10F	98
RX101	98
S	
SCBL	170
SD001	59
SD004	59
SD011	59
SD014	59
SFB01	64
SFB01W	64
SFB02	70
SFB02W	70
SFB03	72
SFB03W	73
SFC01	62
SFC01W	63
SHC05	76
SHC05W	77
SHC06	80
SHC06W	81
SHC08	68
SHC08W	69
SHC10	66
SHC10W	67
SLMCH005	82
SLWCH002	83
SS044	99
SS424	99
SSSN	32
SX088	100
SX126	99
SX131	99
T	
TSME	75
TSWO	74
V	
VSSS	23
W	
W500	78
WCCW	33
WPDS	85
X	
XFC01	172
XNN03	136
XNN04	137
XQ001	173





FRONT COVER : Chef Philip Esteban wearing the **SPRINGFIELD** chef coat in white BESZ009-WHT and the **AUSTIN** Chef Bib Apron ABCDD006 in natural.

BACK COVER : **SEATTLE** Urban Bib and Bistro Aprons (ABS02/AHN07-TAU) with **LARGO** Straps (XNS05-ORA). **OMAHA URBAN SHORT SLEEVE SHIRT** (SHC10-WHT). See pages 56-57 for **JEANS**. See pages 156-158 for **FOOTWEAR** options.